

Photovoltaic panel installation specifications





Overview

The Renewable Energy Ready Home (RERH) specifications were developed by the U.S. Environmental Protection Agency (EPA) to assist builders in designing and constructing homes equipped with a set of features that make the installation of solar energy systems after the completion of the home's.

These specifications were created with certain assumptions about the house and the proposed solar energy system. They are designed for builders.

EPA has developed the following RERH specification as an educational resource for interested builders. EPA does not conduct third-party verification of the.

Builders should use EPA's online RERH SSAT to demonstrate that each proposed system site location meets a minimum solar resource potential. EPA has.

The builder should install a 1" metal conduit from the designated inverter location to the main service panel where the system is intended to be tied into the home's.

What are the key specifications of solar panels?

The article covers the key specifications of solar panels, including power output, efficiency, voltage, current, and temperature coefficient, as presented in solar panel datasheets, and explains how these factors influence their performance and suitability for various applications.

How do I install a photovoltaic system?

Follow along with the essential steps of photovoltaic systems installation, from mounting solar modules and connecting to the grid, to commissioning and regular maintenance for optimal performance.

What is the installation phase of a photovoltaic system?

The installation phase of photovoltaic (PV) systems is a critical step that involves several key activities to ensure the system operates effectively and



safely. Here's a more detailed look at what this phase entails:.

What is the minimum array area requirement for a solar PV inverter?

Although the RERH specification does not set a minimum array area requirement, builders should minimally specify an area of 50 square feet in order to operate the smallest grid-tied solar PV inverters on the market.

What should a solar specs sheet include?

A specs sheet should have information on the material characteristics, including vital information about the size and dimensions of the solar panels. The electrical specifications are where a lot of the technical terms and metrics begin to show up. It will include data on important specs such as Pmax and temperature testing.

What should you consider when evaluating solar panels?

Key specifications to consider when evaluating solar panels are the wattage or power rating, efficiency percentage, operating voltage, current output, and the temperature coefficient that indicates how the panel's performance is affected by temperature changes.



Photovoltaic panel installation specifications



Understand solar panel specification sheets and how to read them

A solar panel spec sheet provides valuable information about the operating parameters of a panel and can help designers, engineers, and installers determine how to configure a solar PV system.

[WhatsApp](#)

Photovoltaic panel installation frame specifications and ...

The most important solar panel specifications include the short-circuit current, the open-circuit voltage, the output voltage, current, and rated power at 1,000 W/m² solar radiation, all

[WhatsApp](#)



Homeowners Guide To Solar Panel Installation Requirements

Understanding solar panel installation requirements is key to a successful project. Below are some components to consider to ensure a smooth and effective installation ...

[WhatsApp](#)



A Guide to Photovoltaic PV System Design and Installation

Dive deep into our comprehensive guide to photovoltaic PV system design and installation. Harness the power of the sun and turn your roof



into a mini power station with this insightful ...

[WhatsApp](#)



Technical guide for interpreting and installing solar panels

This detailed guide will help you understand each of the technical aspects of solar panel specifications so you can correctly select and install the modules in your photovoltaic ...

[WhatsApp](#)



Understanding the Specifications of Solar Panels and How to ...

As the demand for solar power continues to rise, it is crucial to understand the specifications that determine the efficiency and output of solar panels. In this guide, we'll help ...

[WhatsApp](#)



The latest standards for photovoltaic panel technical ...

standard 60-cell 1.7m² solar panel weighs around 18kg, while a 72-cell 2.3m² module weighs around 23.5kg. Not only are 72-cell solar panels heavier, but their extra height makes them ...

[WhatsApp](#)

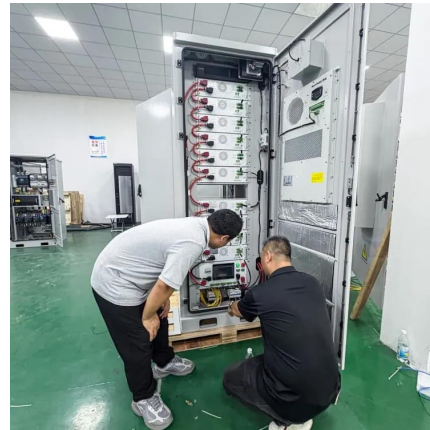




Photovoltaic panel installation technical specifications

The Federal Energy Management Program (FEMP) provides this tool to federal agencies seeking to procure solar photovoltaic (PV) systems with a customizable set of technical specifications.

[WhatsApp](#)



[Solar Panel Datasheet Specifications Explained](#)

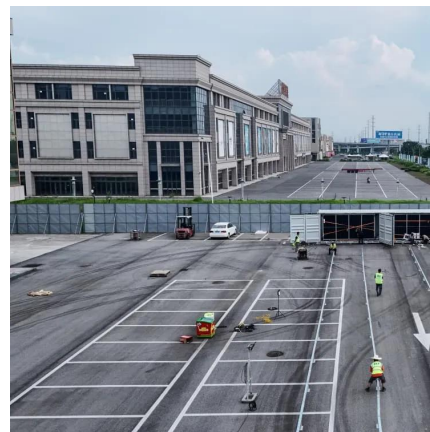
The article covers the key specifications of solar panels, including power output, efficiency, voltage, current, and temperature coefficient, as presented in solar panel datasheets, and ...

[WhatsApp](#)

[Solar Photovoltaic: SPECIFICATION, CHECKLIST AND GUIDE](#)

The RERH specifications and checklists take a builder and a project design team through the steps of assessing a home's solar resource potential and defining the minimum structural and ...

[WhatsApp](#)



[Solar Panels: Browse And Compare Products. EnergySage](#)

Solar panels are the key component in any residential, commercial, or utility-scale solar energy system. Use this guide to compare solar panel options and understand which products are ...

[WhatsApp](#)



A Guide to Photovoltaic Systems Installation: From Setup to ...

Commissioning and testing are critical final steps in the installation of photovoltaic (PV) systems, ensuring that every component functions correctly and efficiently. This phase not only confirms ...

[WhatsApp](#)



Standards and Requirements for Solar Equipment, ...

Requires that rooftop solar systems have the same fire classification as the roof assembly;6 and Establishes criteria for calculating the minimum design loads for rooftop solar PV systems, ...

[WhatsApp](#)



PDs Solar PV Rooftop System Technical Specifications

The Rooftop Mounting Solar Power System installations comprise, but are not limited to the followings items: Solar PV modules consisting of required number of Crystalline PV cells. ...

[WhatsApp](#)





[Trina Solar 550w photovoltaic panel specifications](#)

Description. JA Solar panel, a leading manufacturer of high-performance photovoltaic products, offers the JAM72S30-550/MR solar panel as a breakthrough solution for harnessing clean and ...

[WhatsApp](#)

Contact Us

For catalog requests, pricing, or partnerships, please visit:
<https://www.straighta.co.za>