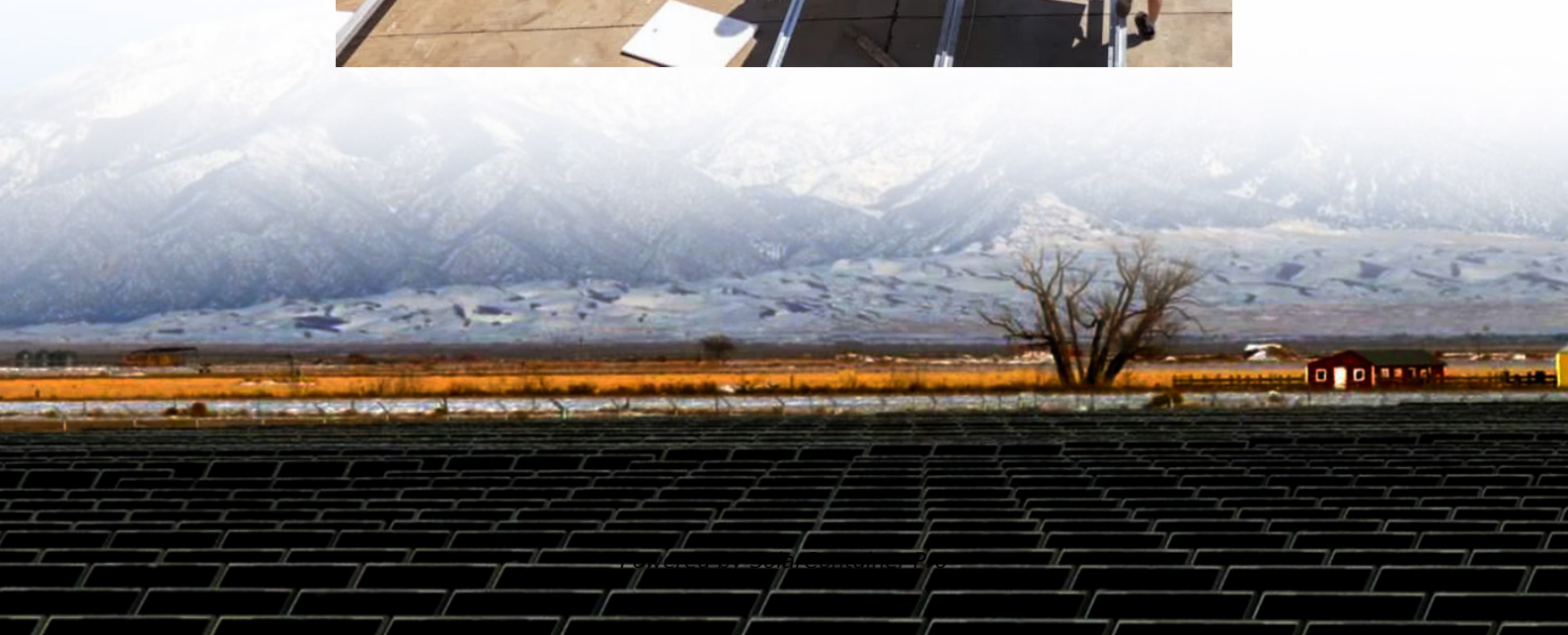


Photovoltaic panel double-sided double-glass power





Overview

What is a double glass (Dual Glass) solar panel?

A double glass (Dual Glass) solar panel is a glass-glass module structure where a glass layer is used on the back of the modules instead of the traditional polymer backsheet. Double glass solar panels were originally heavy and expensive, but the lighter polymer backing panels gained most of the market share.

What is the difference between double-glass solar panels and single-sided solar panels?

The main difference between double-glass photovoltaic modules and single-sided glass solar panels lies in their construction and design, which can impact their durability, performance, and applications. Construction: Double-glass modules consist of two layers of glass sandwiching the solar cells and other components.

What are the benefits of double glazed solar panels?

Double-glazed solar panels, also known as dual glass solar panels, offer increased reliability, especially for large-scale photovoltaic projects. They provide better resistance to higher temperatures, humidity, and UV conditions and have better mechanical stability, which reduces the risk of microcracks during installation and operation.

What is a single sided solar panel?

Construction: Single-sided glass panels have a traditional design where the solar cells and other components are enclosed between a single layer of glass and a backing material. Durability: While still durable, single-sided glass panels may be slightly more vulnerable to environmental factors compared to double-glass modules.

Are double glass panels better than single sided glass panels?



Transparency: The dual-glass design can lead to slightly reduced light transmission compared to single-sided glass panels. However, advancements in glass technology have mitigated this issue to some extent. Weight: Double-glass modules are generally heavier than single-sided glass panels due to the additional glass layer.

Are double-glass modules better than single-sided glass panels?

However, advancements in glass technology have mitigated this issue to some extent. Weight: Double-glass modules are generally heavier than single-sided glass panels due to the additional glass layer. Applications: Double-glass modules are well-suited for environments with harsh weather conditions, high humidity, or corrosive elements.



Photovoltaic panel double-sided double-glass power



What is the Double Glass (Dual Glass) Photovoltaic Solar Panel?

What is the Double Glass Photovoltaic Solar Panel? Glass-glass module structures (Dual Glass or Double Glass) is a technology that uses a glass layer on the back of the ...

[WhatsApp](#)

Double Glass Technology: Harnessing Authentic Advantages for ...

Double glass photovoltaic modules stand out with remarkable advantages in power generation, embodying authenticity in their performance. The transparency and robust ...

[WhatsApp](#)



What is a Bifacial Solar Panel? A Deep Dive into Double-Sided ...

Learn what is a bifacial solar panel, how it works, and whether it's the right choice for your solar needs. Explore the pros, cons, and considerations for bifacial solar panel installations.

[WhatsApp](#)

About the advantages of double-sided double-glass modules and ...

Solar panels that can generate electricity on both sides are called bifacial modules, and are generally in the form of double-glazing. This



article compiles the advantages of double-sided ...

[WhatsApp](#)



What is double-sided double-glass solar energy , NenPower

Double-sided double-glass solar energy refers to a solar technology that utilizes two layers of glass to capture sunlight from both sides of a photovoltaic (PV) panel, enhancing ...

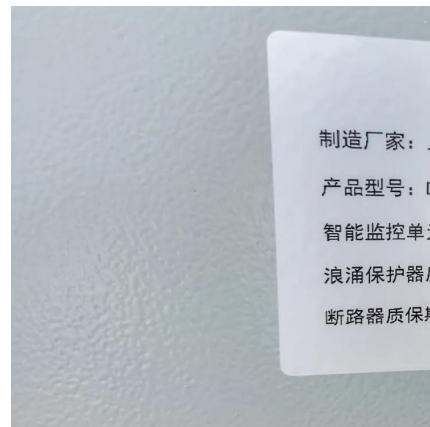
[WhatsApp](#)



Double-sided solar panel can provide the lowest cost

The double-sided solar panel offer many advantages over traditional solar panels, as electricity can be generated from both sides of the double-sided module, thus increasing ...

[WhatsApp](#)



Trina Solar double-sided solar panel double glass frameless ...

Previous: Trina Solar Vertex TSM-DEG19RC.20 Bifacial Dual Glass Monocrystalline Module 575W 132 Cells PV Solar Panels Next: Trina Solar Solar Panel Certificate Monocrystalline ...

[WhatsApp](#)

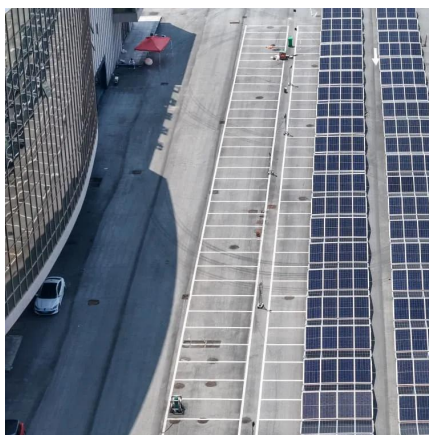




The Difference Between Double-glass and Single-sided Glass Solar Panels

The main difference between double-glass photovoltaic modules and single-sided glass solar panels lies in their construction and design, which can impact their durability, ...

[WhatsApp](#)



What advantages does double glass solar photovoltaic panels ...

Double-sided modules are photovoltaic modules that can generate electricity on both sides. When the sun shines on double-sided modules, part of the direct solar radiation and scattered light ...

[WhatsApp](#)

Double-Side Glass Technology in PV Systems: Benefits, ...

6 days ago· Bifacial solar panels take in sunlight from both sides. This helps them make 5% to 30% more energy than regular panels. Double side glass technology makes panels stronger. It ...

[WhatsApp](#)



What Does Double-Glass Double-Sided Photovoltaic Panels Mean?

The double-glass bifacial module with mainstream structure has the advantages of long life cycle, low attenuation rate, weather resistance, high fire rating, good heat dissipation, good ...

[WhatsApp](#)



Contact Us

For catalog requests, pricing, or partnerships, please visit:
<https://www.straighta.co.za>