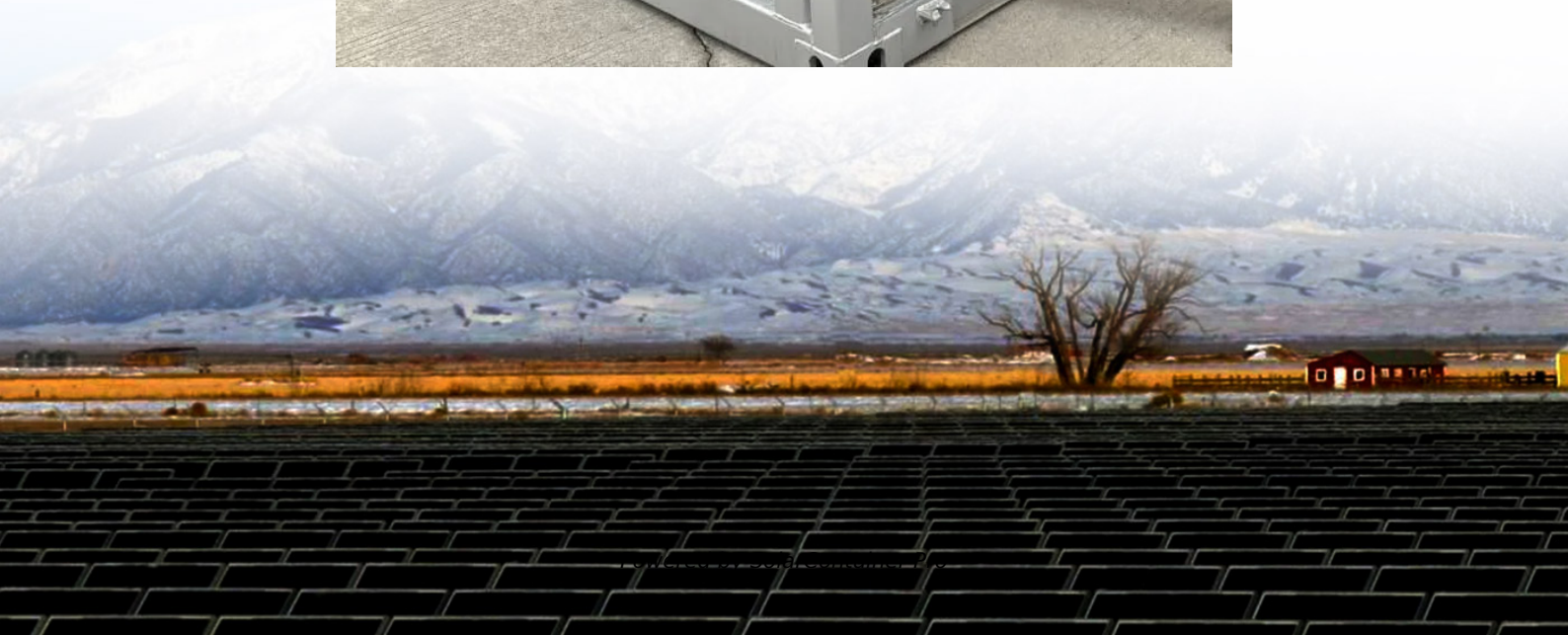


# **Photovoltaic monocrystalline panel wattage**





## Overview

---

On average, a solar panel produces around 150 to 200 watts per square meter. This can vary due to: Example: A 1.7 m<sup>2</sup> panel with 20% efficiency will produce about 340W in full sun. Note: Monocrystalline panels lead in efficiency, making them ideal for rooftops with limited space. What is a monocrystalline solar panel?

A monocrystalline PV panel is a premium energy-producing panel consisting of smaller monocrystalline solar cells (60 to 72 cells). Their superior aesthetics and efficiency make them the preferred choice for intelligent solar thinkers investing in the long term. How Are Monocrystalline Solar Panels Made?

.

Are monocrystalline solar panels better than polycrystalline?

Combine them in a solar panel, and you'll get around 17 % of efficiency. Additionally, regarding low irradiance performance, monocrystalline solar panels have a slight advantage (2%) over polycrystalline panels. So, What's the Reason?

.

How much does a monocrystalline solar panel weigh?

Weighing only 1.2 lbs and fits almost anywhere. Take it with you hiking, fishing, camping, or whatever adventure you feel it would come in handy. The monocrystalline solar panel will charge phones, power banks, headlamps, fitness trackers, and lighthouse lanterns.

How many solar cells are in a single monocrystalline panel?

Based on their size, a single monocrystalline panel may contain 60-72 solar cells, among which the most commonly used residential panel is a 60-cells. Features A larger surface area due to their pyramid pattern. The top surface of monocrystalline panels is diffused with phosphorus, which creates an



electrically negative orientation.

What are the advantages and disadvantages of monocrystalline solar panels?

Each type has advantages and disadvantages regarding efficiency, cost, and appearance. Made from single-crystal silicon give them a uniformly dark color, monocrystalline solar panels have a high efficiency that typically ranges from 15% to 22%.

How many Watts Does a solar panel produce per square meter?

On average, a solar panel produces around 150 to 200 watts per square meter. This can vary due to: Example: A 1.7 m<sup>2</sup> panel with 20% efficiency will produce about 340W in full sun. Note: Monocrystalline panels lead in efficiency, making them ideal for rooftops with limited space.



## Photovoltaic monocrystalline panel wattage

---



### Monocrystalline Solar Panel -- Everything You Need To Know

As you read ahead, we delve into the nuances of solar panel sizes and wattage, providing you with everything you need to make informed decisions about your solar energy ...

[WhatsApp](#)

### 100W 12V Flexible Monocrystalline Solar Panel , Renogy Solar

Lightweight, thin, and capable of flexing up to 248 degrees, this Renogy 100W Flexible Solar Panel is your perfect solution for a power-independent journey! IP68 junction box and IP67 ...

[WhatsApp](#)



### What is the maximum wattage of a monocrystalline solar panel?

The maximum wattage of a monocrystalline solar panel typically ranges between 300 to 400 watts, depending on various factors such as efficiency, size, and technology ...

[WhatsApp](#)



### Solar Panel Ratings Explained - Wattage, Current, Voltage, and

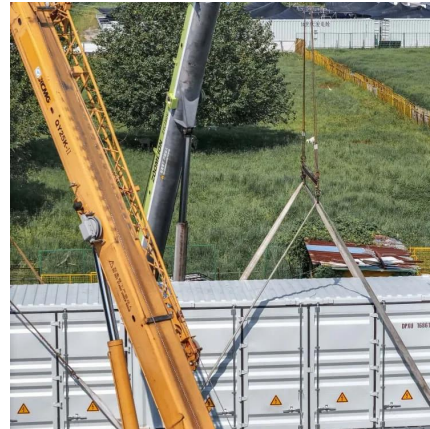
Different electrical ratings (Watt, Amps, and Volts) can necessitate different equipment, and certain panels may be better suited for particular





applications and ...

[WhatsApp](#)



### **210mm PV Module PERC Mono 500W 510W 520W Solar Panels 500 Watts Solar**

We are best 210mm PV Module PERC Mono 500W 510W 520W Solar Panels 500 Watts Solar Panel Price in Philippines suppliers, we supply best 210mm pv module for sale.

[WhatsApp](#)



### **Solar Panel Wattage Explained: How Many Watts Do You Need?**

On average, a solar panel produces around 150 to 200 watts per square meter. This can vary due to: Example: A 1.7 m<sup>2</sup> panel with 20% efficiency will produce about 340W in full ...

[WhatsApp](#)



### **[Monocrystalline Solar Panels: 2025 Costs & How They Work](#)**

Monocrystalline panels are the most efficient residential solar option, with most models reaching between 18% and 23% efficiency. Premium brands may go even higher. ...

[WhatsApp](#)





## Solar Panel Sizes and Wattage: Everything You Need to Know

As you read ahead, we delve into the nuances of solar panel sizes and wattage, providing you with everything you need to make informed decisions about your solar energy ...

[WhatsApp](#)



## Understanding Solar Panel Sizes and Wattage: A Complete Tutorial

When considering solar panel sizes and wattage, you'll typically find options ranging from 250 to 400 watts. Opting for higher wattage units can be a game-changer, ...

[WhatsApp](#)



## 400-Watt Monocrystalline Portable Solar Panel Foldable Single ...

Perfectly utilize the natural solar power with the help of this Renogy Monocrystalline Portable Solar Panel Foldable Single Solar Blanket Sunpower Cells Efficiency Outdoor.

[WhatsApp](#)



## Contact Us

---

For catalog requests, pricing, or partnerships, please visit:  
<https://www.straightta.co.za>