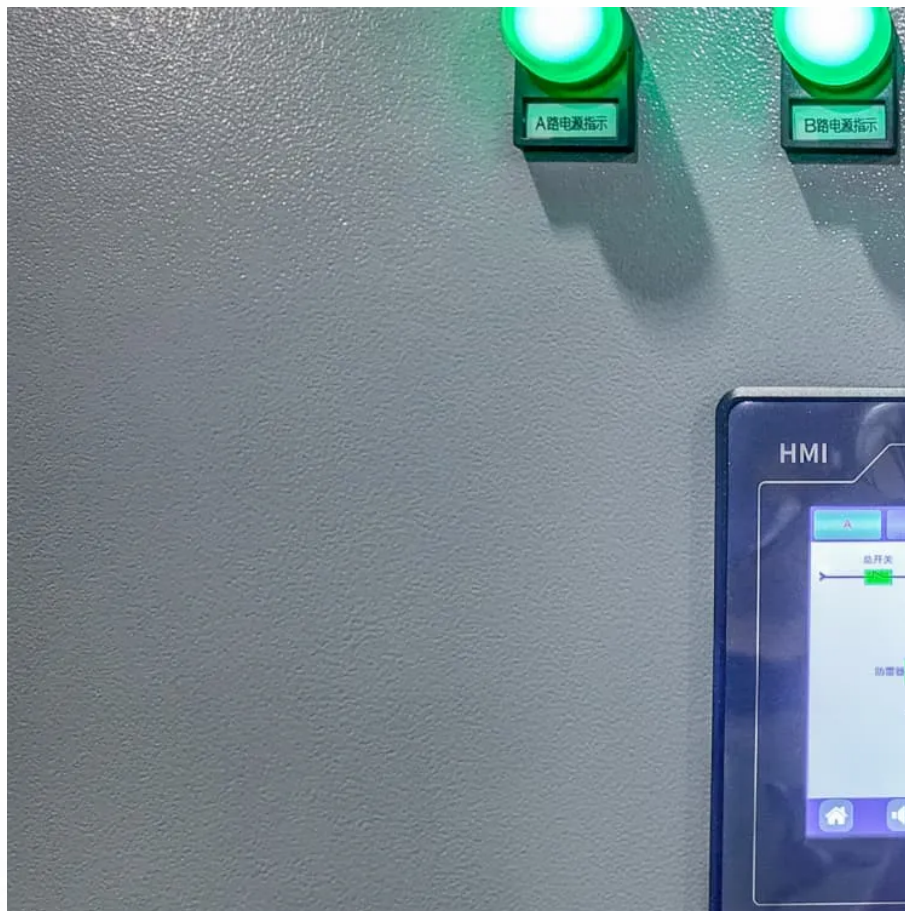


Photovoltaic combiner box 50kv





Overview

What is a photovoltaic combiner box?

Photovoltaic combiner boxes play a crucial role in solar panel systems, especially in larger installations. They serve as a centralized point where wirings from multiple panels are combined. This allows for a more organized and safer electrical setup.

How do I choose a PV combiner box?

Scalability: PV combiner boxes are designed to accommodate a varying number of solar panels, making them suitable for both small and large-scale installations. They can be easily expanded or modified as the system grows. When selecting PV combiner boxes, several factors should be taken into consideration:.

What are the components of a PV combiner box?

PV combiner boxes consist of several key components: **Input Terminals:** These terminals are where the output cables from the solar panels are connected. They are designed to handle high currents and provide a secure connection. **Circuit Breakers:** Combiner boxes often include circuit breakers to protect the system from overcurrent or short circuits.

What is a polyenergy PV combiner box?

2. PolyEnergy PV combiner box With 15A Rated Current Fuse PolyEnergy supports the need for every solar power system with its promise of wide compatibility and high safety. The combiner box ensures easy installation to provide comprehensive protection of solar power systems from short circuits and reverse energy flow. Robust Protection.

What are the UL standards for a photovoltaic combiner box?

These standards guarantee that the equipment operates reliably and minimizes risks to your photovoltaic system. Industry certifications like UL



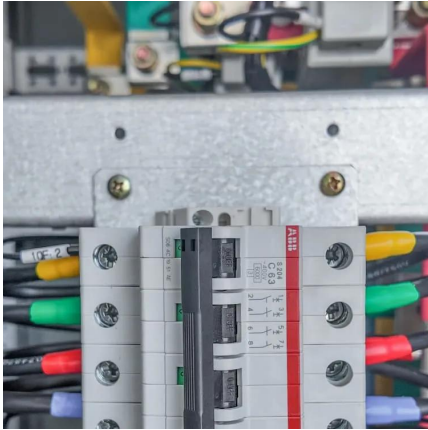
1741 and UL9540 play a pivotal role in establishing the safety and quality of combiner boxes.

Do solar combiner boxes have surge protection?

Given that solar installations are exposed to the outdoors, combiner boxes often include surge protection to protect the system from voltage spikes caused by lightning or other electrical disturbances. To prevent overcurrent conditions and protect wiring and components, combiner boxes are equipped with fuses or circuit breakers.



Photovoltaic combiner box 50kv



[Solar Photovoltaic Technology Basics](#)

What is photovoltaic (PV) technology and how does it work? PV materials and devices convert sunlight into electrical energy. A single PV device is known as a cell. An individual PV cell is ...

[WhatsApp](#)

The Ultimate Guide to Solar Combiner Boxes: From Basics to ...

Explore the comprehensive guide to PV Solar Combiner Boxes: Learn about types, components, selection criteria, installation best practices, maintenance, and advanced ...

[WhatsApp](#)



[Understanding Photovoltaics: A Comprehensive Overview](#)

Photovoltaics, often abbreviated as PV, is a critical technology for converting sunlight directly into electricity through the photovoltaic effect. It is one of the most widely discussed forms of ...

[WhatsApp](#)

Understanding the Function of a Combiner Box in Solar Photovoltaic

These codes dictate the proper sizing, rating, and installation requirements of combiner boxes to meet the demands of the solar PV system and



mitigate potential hazards. ...

[WhatsApp](#)



[TECHNICAL SPECIFICATIONS OF ON-GRID SOLAR PV ...](#)

3. Definition electronics, which feeds generated AC power to the Grid. Other than PV Modules and Inverter/Inverters, the system consists of Module Mounting Structures, appropriate DC ...

[WhatsApp](#)

Contact Us

For catalog requests, pricing, or partnerships, please visit:
<https://www.straighta.co.za>