

Peak shaving and valley filling energy storage solution





Overview

How can technology improve peak shaving & valley filling?

The advancement of technology plays a pivotal role in enhancing the effectiveness of peak shaving and valley filling. Innovations such as AI and IoT have led to smarter energy management systems that can predict peak times and adjust consumption automatically.

What is peak shaving & valley filling?

Manufacturing Plants: With peak shaving and valley filling, manufacturing facilities can optimize their energy use to coincide with the most beneficial times, both operationally and economically. The advancement of technology plays a pivotal role in enhancing the effectiveness of peak shaving and valley filling.

Does multi-agent system affect peak shaving and valley filling potential of EMS?

In this paper, a Multi-Agent System (MAS) framework is employed to investigate the peak shaving and valley filling potential of EMS in a HRB which is equipped with PV storage system. The effects of EMS on shiftable loads and PV storage resources are analyzed.

What is valley filling?

Valley filling, conversely, involves increasing energy consumption during periods of low demand. This method is employed to help utilities manage energy loads more evenly across the day. Valley filling can contribute to a more stable energy grid and prevent the wastage of energy resources.

What is the difference between valley filling and scheduled maintenance?

Scheduled Maintenance and Operations: Aligning energy-intensive processes to off-peak times can effectively lower the peak energy demand of a facility. Valley filling, conversely, involves increasing energy consumption during



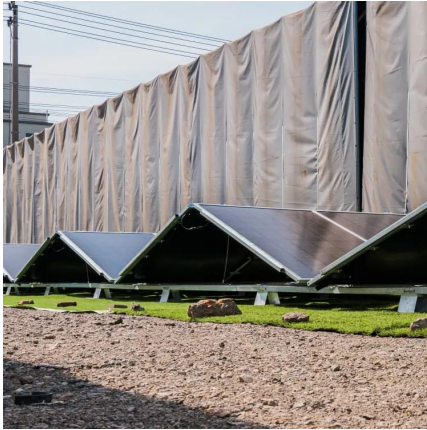
periods of low demand. This method is employed to help utilities manage energy loads more evenly across the day.

Why is valley filling important?

Valley filling can contribute to a more stable energy grid and prevent the wastage of energy resources. Cost Efficiency: Utilizing energy during off-peak hours leverages lower electricity rates. Improved Equipment Utilization: Operating energy-intensive equipment during off-peak hours can enhance machinery lifespan and operational efficiency.



Peak shaving and valley filling energy storage solution



Understanding Peak Shaving and Valley Filling in Energy ...

This solution supports the mixed use of lead-acid and lithium batteries, featuring peak shaving, valley filling, and remote monitoring capabilities, which can significantly reduce ...

[WhatsApp](#)

Peak shaving and valley filling: Slenergy& #39;s energy storage solutions

What are peak shaving and valley filling? How can energy storage systems help users to achieve peak shaving and valley filling? Peak shaving refers to reducing electricity consumption during ...

[WhatsApp](#)



[What Is Peak Shaving and Valley Filling?](#)

3 days ago· It means using cheap, off-peak electricity when demand is low (typically at night), and storing it or shifting operations to those periods. You're "filling the valleys" of the grid load ...

[WhatsApp](#)

The 200kW645kWh project for peak shaving and valley filling ...

This solution is designed to meet the development needs of renewable energy and new energy vehicles, that is, photovoltaic +



energy storage + EV charging mode, using photovoltaic power ...

[WhatsApp](#)



[Energy Storage Peak Shaving and Valley Filling Project](#)

This energy storage project, located in Qingyuan City, Guangdong Province, is designed to implement peak shaving and valley filling strategies for local industrial power consumption.

...

[WhatsApp](#)



Peak Shaving and Valley Filling with Energy Storage Systems

What is Peak Shaving and Valley Filling? Peak shaving and valley filling refer to energy management strategies that balance electricity supply and demand by storing energy during ...

[WhatsApp](#)



[ENERGY STORAGE PEAK SHAVING AND VALLEY FILLING](#)

Peak shaving and valley filling solution for energy storage system in Casablanca Morocco In this paper, a Multi-Agent System (MAS) framework is employed to investigate the peak shaving ...

[WhatsApp](#)





Study on heat transfer characteristics of directly buried casing energy

Seasonal Thermal Energy Storage (STES) effectively utilizes solar energy to perform "peak shaving and valley filling" in the energy supply. Borehole thermal energy ...

[WhatsApp](#)



Peak-shaving cost of power system in the key scenarios of ...

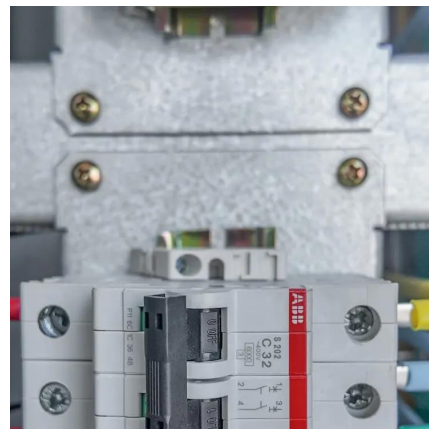
Utilizing the deep regulation capability of thermal power units and energy storage for peak-shaving and valley filling is an important means to enhance the peak-shaving ...

[WhatsApp](#)

How Can Industrial and Commercial Energy Storage Reduce ...

Among the most effective strategies are peak shaving, valley filling, and energy-saving cost reduction. This article explains how these techniques work and how C& I energy ...

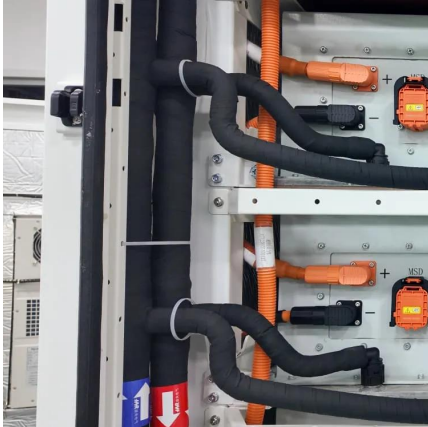
[WhatsApp](#)



Peak shaving and valley filling potential of energy management ...

In this paper, a Multi-Agent System (MAS) framework is employed to investigate the peak shaving and valley filling potential of EMS in a HRB which is equipped with PV storage ...

[WhatsApp](#)



The Optimization Principle in the Era of Green Energy:Peak Shaving ...

Peak shaving and valley filling offer an effective solution by storing surplus renewable energy during overproduction and releasing it when needed, increasing utilization ...

[WhatsApp](#)



Peak shaving and valley filling solution for energy storage system ...

Peak shaving and valley filling solution for energy storage system in Casablanca Morocco
Analysis of energy storage demand for peak shaving and Energy storage (ES) can mitigate ...

[WhatsApp](#)

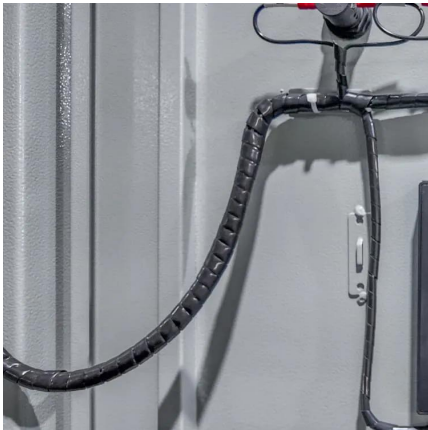


Peak shaving and valley filling potential of energy management system

In this paper, a Multi-Agent System (MAS) framework is employed to investigate the peak shaving and valley filling potential of EMS in a HRB which is equipped with PV storage ...

[WhatsApp](#)





Application Scenarios and Configuration Solutions for 20kWh ...

2 days ago· 1. Peak Shaving & Valley Filling to Reduce Electricity Costs In regions with time-of-use pricing, charge at night when rates are low and use electricity during daytime peak hours. ...

[WhatsApp](#)

Contact Us

For catalog requests, pricing, or partnerships, please visit:
<https://www.straighta.co.za>