

## **Peak power 4 kW inverter**





## Overview

---

What is inverter peak power?

Some appliances start with several times the power required for normal operation, but only for a short period of time. The purpose of inverter peak power is to ensure that the power inverter can handle the peaks of such appliances and protect the power inverter, thereby preventing the peaks from damaging the power inverter.

Why should you choose a solar inverter rated in kW?

Inverters must handle peak solar input, battery charging, and load output—all at once. Choosing an inverter rated in kW (not just kVA) gives you a clearer view of real usable power. This prevents undersizing and keeps your solar-storage system running efficiently.

How many kW can a 10 kVA inverter handle?

If your inverter has a power factor of 0.9, then a 10 kVA inverter will deliver only 9 kW of real output. This means the inverter can only handle 10.2 kW of actual load—not 12. Understanding this gap helps avoid overspending on capacity or overloading your system. How does this apply to solar and hybrid inverter systems?

.

How much power does a 500W inverter have?

For a 500W motor, the power impact is between 1500W and 3500W. Inverters generally have inverter peak value that is 2 times the rated power, that is to say, a 500W inverter has an instant power output of 1000W, and a 1000W has a peak output of 2000W. But on the other hand, it does not mean that all motors have 7 times the peak value.

How long does an inverter peak power last?



A: The peak power of an inverter generally only lasts for a few seconds, usually between 1 and 5 seconds, depending on the model and design. It is designed to cope with transient surges when an appliance starts, not for long periods. Understand the key differences between inverter peak power and rated power.

What is the power factor of a solar inverter?

Most hybrid and solar inverters operate at a power factor between 0.8 and 1.0. The power factor directly impacts how much usable energy (kW) you can get from your inverter. If your inverter has a power factor of 0.9, then a 10 kVA inverter will deliver only 9 kW of real output. This means the inverter can only handle 10.2 kW of actual load—not 12.



## Peak power 4 kW inverter

---



### Useful guide to inverter peak power and how to choose an inverter

In this article, we will provide an overall introduction to inverter peak power, including what it is and how it's different on various kinds of load. And also, we will list some ...

[WhatsApp](#)

### [Knox Krypton 5600 - 4Kw Hybrid Inverter Price](#)

Control your inverter from your smartphone, anytime, anywhere using smartESS app. This inverter is best for 3kw solar system in pakistan / 4kw solar system in pakistan / 5 kw solar ...

[WhatsApp](#)



### [GENPOWER 4.7kW Peak 3.8kW Inverter Generator, Push ...](#)

GENPOWER 4.7kW Peak 3.8kW Inverter Generator, Push Button & Remote Start, Portable w/ Wheels, Camping, Backup, Mobile A/C The Genpower GP4750ie Inverter Generator is the ...

[WhatsApp](#)



### [4kW Off Grid Inverter, 48V , Power Home](#)

How do I determine if a 4 kW off-grid solar inverter (48 volt) is right for my setup? Power Requirements: Calculate your total power needs and ensure the inverter's capacity exceeds this.





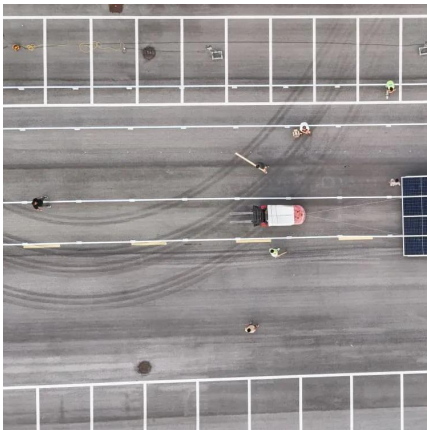
[WhatsApp](#)



#### **4 kW Solar Inverter, 24V/48V/96V DC**

Solar inverter for home with power frequency pure sine wave output, low loss and high efficiency. Battery under-voltage, over-voltage, short circuit, over temperature, overload protections.

[WhatsApp](#)



#### **Understanding Inverter Power Ratings: kW vs kVA Explained**

When I first started dealing with inverter specs, I often saw two values-- kW and kVA. At first, they seemed interchangeable. But later I realized they mean very different things, and ...

[WhatsApp](#)



#### **[GENPOWER 4.7kW Peak 3.8kW Inverter Generator, Push ...](#)**

The Genpower GP4750ie Inverter Generator is the perfect blend of power, efficiency, and portability, making it ideal for various uses, including powering caravan and motorhome air ...

[WhatsApp](#)





### [4kW solar panel systems , Costs & output \[UK, 2025\]](#)

What is a 4kW solar panel system? A 4kW solar panel system has a peak power rating of four kilowatts, meaning it would produce 4,000 kilowatt-hours (kWh) of electricity per ...

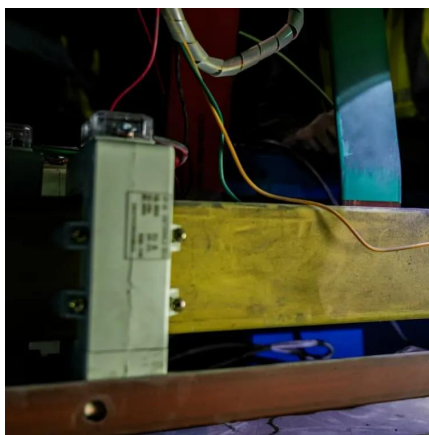
[WhatsApp](#)



### **Ultimate Guide to 4kW Solar System: Basics, Cost & Electricity**

4kW Solar System: 1. Understanding a solar panel system 2. Calculate number of solar panels needed 3. Calculate the size of battery 4. Calculate the inverter size.

[WhatsApp](#)



### **is it normal for peak power to be 4.1kw when I have a 5.2 kw**

My system nameplate has a peak rating of 8.19 kw, and I've seen it hit 8.1kw in the summer. It's down to 6.1kw peak this week. Seasonal sun intensity is making a difference, and ...

[WhatsApp](#)



### **4KW (Peak 12KW) Pure Sine Wave Off Grid Power Inverter ...**

\*\*\*Inverter and Inverter Multi Protection Function: pure sine wave power inverter, low frequency, 3 times surge power, up to about 12000w for 15-20 seconds. Power save ...

[WhatsApp](#)



## Contact Us

For catalog requests, pricing, or partnerships, please visit:  
<https://www.straightta.co.za>