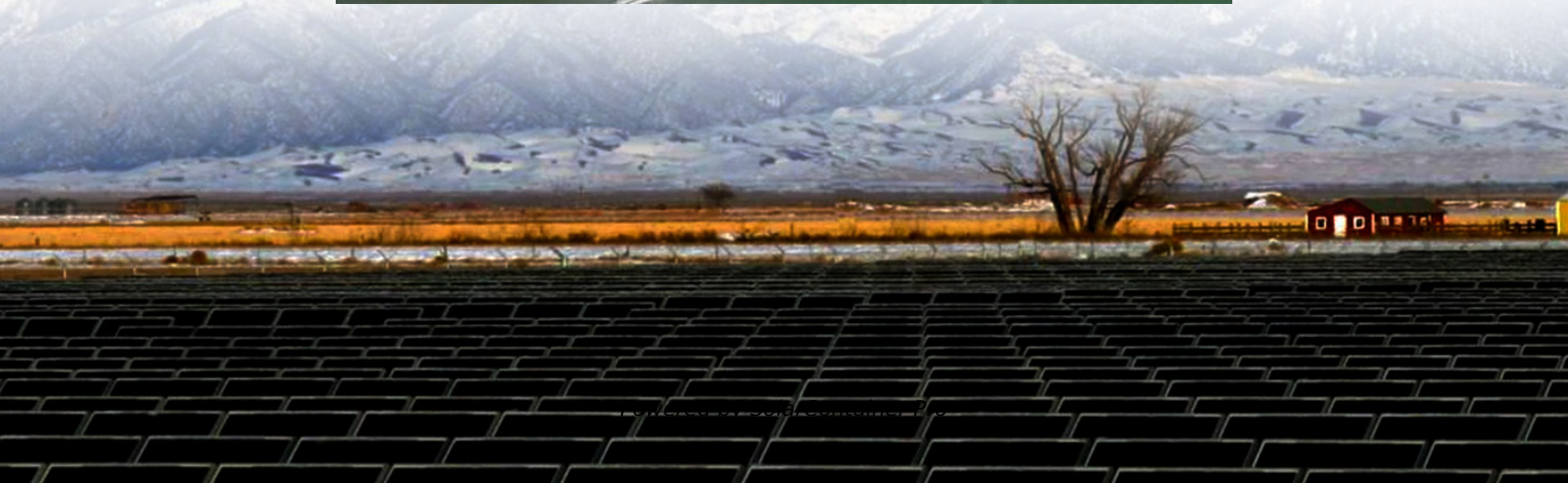


Parameters to consider when assembling a lithium battery pack





Overview

Cell configuration design determines the fundamental electrical characteristics of lithium ion battery packs. Series and parallel arrangements establish voltage levels, capacity specifications, and overall performance parameters for the completed battery system. What is a lithium ion battery pack?

A battery pack consists of multiple cells connected in series or parallel. How to make lithium-ion batteries?

It's always been an interesting topic. The production of lithium-ion batteries is a complex process, totaling Three steps. The cell sorting stage is a critical step in ensuring the consistent performance of lithium-ion batteries.

How do you test a lithium battery pack?

Voltage and Current Testing: Use a multimeter to ensure the pack operates within safe parameters. Assembling a lithium battery pack requires careful planning, the right tools, and a thorough understanding of series and parallel configurations.

How should lithium batteries be protected?

Lithium batteries should be protected from severe vibration and external impact during assembly and use to avoid damaging the battery structure and performance. In applications such as mobile equipment and electric vehicles, suitable securing and cushioning measures should be taken. 5. Pay attention to storage conditions.

How to choose a lithium ion battery?

The lithium-ion battery manufacturer should have a strict gap standard of less 5mv voltage gap, less 15mΩ internal resistance, and less 5mAh capacity gap. To ensure the li-ion battery with a long-lasting cycle and reliable performance, the cell sorting process should be very strict.

What is advanced lithium battery pack design?



Advanced Lithium Battery Pack Design: These custom batteries are made when the customer has special requests for temperature capabilities, dimensions, discharge current, and/or battery cycles. In this case, our chemistries, enclosure, and battery management system (BMS) experts are required to monitor each project closely.

What is a lithium battery management system (BMS)?

The cells within a lithium battery pack are typically arranged in series or parallel configurations to achieve the desired voltage and capacity. Additionally, a Battery Management System (BMS) is often integrated to monitor and ensure the safe operation of the battery pack.



Parameters to consider when assembling a lithium battery pack



How to Assemble a Lithium Battery Pack: Step-by-Step Guide for

Assembling a lithium battery pack requires careful planning, the right tools, and a thorough understanding of series and parallel configurations. By following this step-by-step ...

[WhatsApp](#)

Specification parameters of the 12V lithium-ion battery. Assembly

Specification Parameters of the 12V Lithium-ion Battery: A Comprehensive Guide for Optimal Performance When selecting a 12V lithium-ion battery for your application--whether for marine ...

[WhatsApp](#)



[Lithium-Ion Battery Pack Manufacturing Process Guide](#)

The process of lithium-ion battery pack manufacturing involves meticulous steps from cell sorting to final testing and assembly. Each phase plays a critical role in ensuring the ...

[WhatsApp](#)

Complete Guide to Lithium Battery Pack Design and Assembly

The performance and safety of a battery pack first depend on cell selection. You must ensure the cells are highly consistent in key parameters



like voltage, internal resistance, ...

[WhatsApp](#)



Important considerations for assembling lithium battery packs in a

The lithium-ion battery pack in the assembly process is important to note the following points: each single lithium-ion battery should be matched with capacity, internal ...

[WhatsApp](#)



[An End-To-End Methodology for Battery Pack Design and](#)

With the expected high penetration of electric vehicles and electrochemical energy storage, there is a need to better understand and predict battery pack performance and durability. The main ...

[WhatsApp](#)



[The Production Process of Cylindrical Lithium](#)

A battery management system is an integral part of any cylindrical lithium - battery pack. The BMS is responsible for monitoring and controlling various parameters of the battery ...

[WhatsApp](#)





How to Build a Lithium Ion Battery Pack? A Step by Step Guide ...

Proper assembly will not only produce a battery that can function properly, but also help keep us safe while using the lithium-ion battery pack. Below is a list of materials and tools ...

[WhatsApp](#)



How to Build a Lithium Battery: Step-by-Step for Beginners

Before assembling the lithium battery pack, you need to check whether the lithium battery cell and the protective circuit board are intact and ensure that their specifications and ...

[WhatsApp](#)

How to Assemble a Lithium-Ion Battery Pack with a BMS Module: ...

In this guide, we provide step-by-step instructions, tips, and safety precautions to help you assemble a reliable battery pack with a BMS module, regardless of your experience ...

[WhatsApp](#)



The key factors to consider in lithium battery pack production lines

"In summary, a lithium battery pack is an assembly of multiple lithium battery cells connected in series or parallel configurations to meet specific power demands of devices and ...

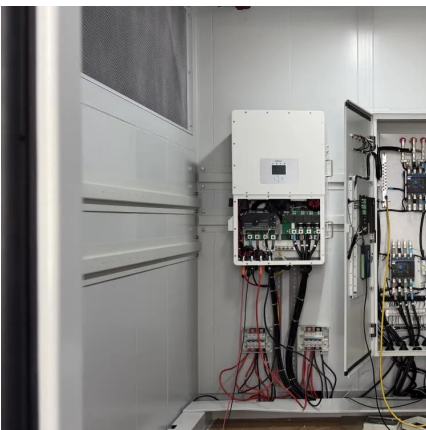
[WhatsApp](#)



Battery Cell Manufacturing Process

In order to engineer a battery pack it is important to understand the fundamental building blocks, including the battery cell manufacturing process. This will allow you to understand some of the ...

[WhatsApp](#)



[Lithium Battery Pack Process: More Than Just "Assembly"](#)

Many people simply equate lithium battery packs with "battery assembly." However, this process is actually a highly integrated system engineering process that combines electrochemistry, ...

[WhatsApp](#)

[Lithium-ion Battery Pack Manufacturing Process & Design](#)

Designing an enclosure for the custom lithium-ion battery packs considers several factors, including the work environment and function of the battery. The purpose of the ...

[WhatsApp](#)





How to Build a Lithium Ion Battery Pack: Expert Guide for Engineers

What are the key components needed to build a lithium-ion battery pack? The key components include lithium-ion cells (cylindrical, prismatic, or pouch), a battery management ...

[WhatsApp](#)

Contact Us

For catalog requests, pricing, or partnerships, please visit:
<https://www.straightta.co.za>