

PV inverter installation and connection





Overview

How do I set up a solar inverter?

Connecting the Battery to the Inverter 6. Testing the System To set up the inverter of a solar system, you need to connect the solar charge controller to the battery, connect the solar panels to the charge controller, and then connect the battery to the inverter. Ensure all connections are secure and grounded before testing the system.

What should you know before installing a solar inverter?

Any solar inverter installation project must have a clearly laid out plan that includes measures to ensure everyone's safety. The fact is that there are a few things you can do to ensure the solar installation process runs smoothly from start to finish before you even open your system. Here are some tips:.

How do I choose a solar inverter?

Step 1: Before beginning installation, choose the right solar inverter for your system. Consider if a string inverter or a microinverter would be suitable for your needs. In addition, maintain regulatory compliance by buying any essential supporting equipment, such as rapid shutdown devices.

How do I connect multiple inverters to a PV system?

When there is only one inverter in the PV system, connect the additional grounding cable to a nearby grounding point. When there are multiple inverters in the PV system, connect grounding points of all inverters and the PV array frames to the equipotential cable (according to the onsite conditions) to implement an equipotential connection.

What is a solar panel inverter?

In simple terms, it's the brain of your solar power system. Solar panels generate direct current (DC) electricity, but your home appliances run on alternating current (AC). The inverter's job is to convert that DC power into



usable AC power for your home. let's get into the Core of installing your solar panel inverter.

Where should a solar inverter be installed?

When deciding on the installation location for your solar inverter, several factors must be considered. Ideally, the inverter should be installed indoors, near a sub-board for houses or the main switchboard for businesses.



PV inverter installation and connection



Complete Guide to Solar Inverter Installation , Smartech

Complete Guide to Solar Inverter Installations: From Roof Panels to Batteries! Solar energy is the future, and installing a solar power system is a fantastic way to cut down ...

[WhatsApp](#)

? Step-by-Step Guide: PV Inverter & Battery Storage Installation

Whether you're a DIY enthusiast, a homeowner wanting to understand your system, or a new installer, this tutorial offers clear guidance to help you complete the connection safely and ...

[WhatsApp](#)

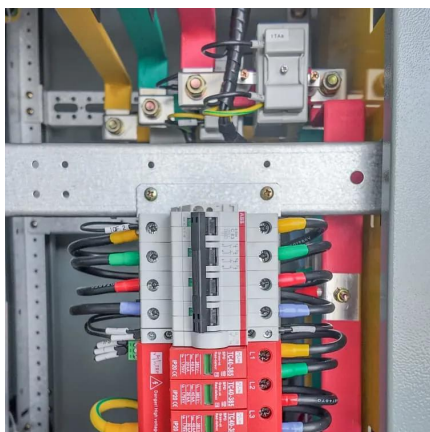


[Three Phase System Installation Guide](#)

Addition of caution - installation in saline environment Clearance for three phase inverters installed side-by-side, single row of inverters outdoors: 5 cm / 2" PVRSS is enabled by default.

...

[WhatsApp](#)



[Quick_Installation_Guide-EN-SG3K_4K_4K6_5KTL-M-Ver15...](#)

The inverter can work on independent mode and parallel mode, you can connect PV input as shown (In parallel mode, one pair of DC terminals



in DC1 input and DC2 input must be short ...

[WhatsApp](#)



[Complete Hybrid Solar Inverter Wiring Installation](#)

Welcome to our comprehensive guide on wiring a hybrid solar inverter! In this video, we take you step-by-step through the entire process of setting up and wiring your hybrid solar inverter system.

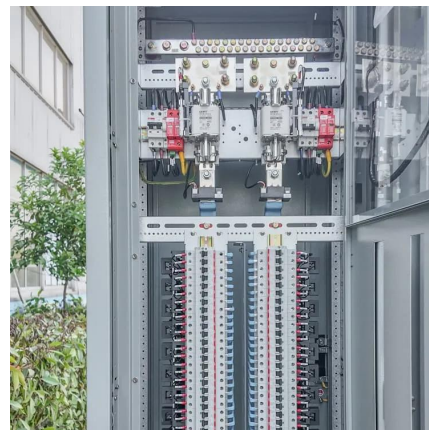
[WhatsApp](#)



[Complete Guide For Solar Inverters Installation](#)

Our solar panel installation guide includes step-by-step instructions to help you through every step of the solar and inverter installation process, whether you plan on installing ...

[WhatsApp](#)



? Step-by-Step Guide: PV Inverter & Battery Storage Installation

Whether you're a DIY enthusiast, a homeowner wanting to understand your system, or a new installer, this tutorial offers clear guidance to help you complete the connection safely and correctly

[WhatsApp](#)





[Complete Guide For Solar Inverters Installation](#)

If you do the connections during the day, you want to cover each PV panel before you connect it to its inverter. The next day, I coiled up the extra wire at each PV pane/inverter, ...

[WhatsApp](#)



[PV Inverter Quick Installation Guide](#)

Install the inverter vertically or at a minimum back tilt of 10°. Forward installation or upside-down installation is prohibited. 1) Reserve enough clearance around the inverter to ensure sufficient ...

[WhatsApp](#)

How to Install Solar Inverter at Home [Step by Step Guide]

How to Install Solar Inverter at Home [Step by Step Guide] Choose the accurate size inverter, plan location, prioritize safety, and connect components for successful installation.

[WhatsApp](#)



[?B?30240301001951-?????-????-SUN-\(60-80\)K...](#)

. . Installation of datalogger When into the installing interface WiFi fix stick, it with a screw. off the sealing strip on the inverter. The configuration of the datalogger Insert needs the ...

[WhatsApp](#)



Solar Panel Inverter Installation: A Step-by-Step Guide for ...

Don't worry if you're new to this--today, we're going to walk you through a step-by-step guide on how to install a solar panel inverter. By the end of this guide, you'll feel confident ...

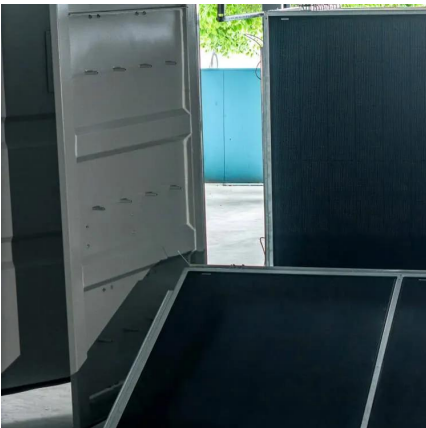
[WhatsApp](#)



[How to Connect Solar Inverter for Solar Homes](#)

So, here is a detailed guide on how to install the solar PV inverter practically. Not only to home owners interested in solar power but also to the technicians and enthusiasts, this ...

[WhatsApp](#)



How to Set Up the Inverter of a Solar System? , SolarCtrl

To set up the inverter of a solar system, you need to connect the solar charge controller to the battery, connect the solar panels to the charge controller, and then connect ...

[WhatsApp](#)





Contact Us

For catalog requests, pricing, or partnerships, please visit:
<https://www.straighta.co.za>