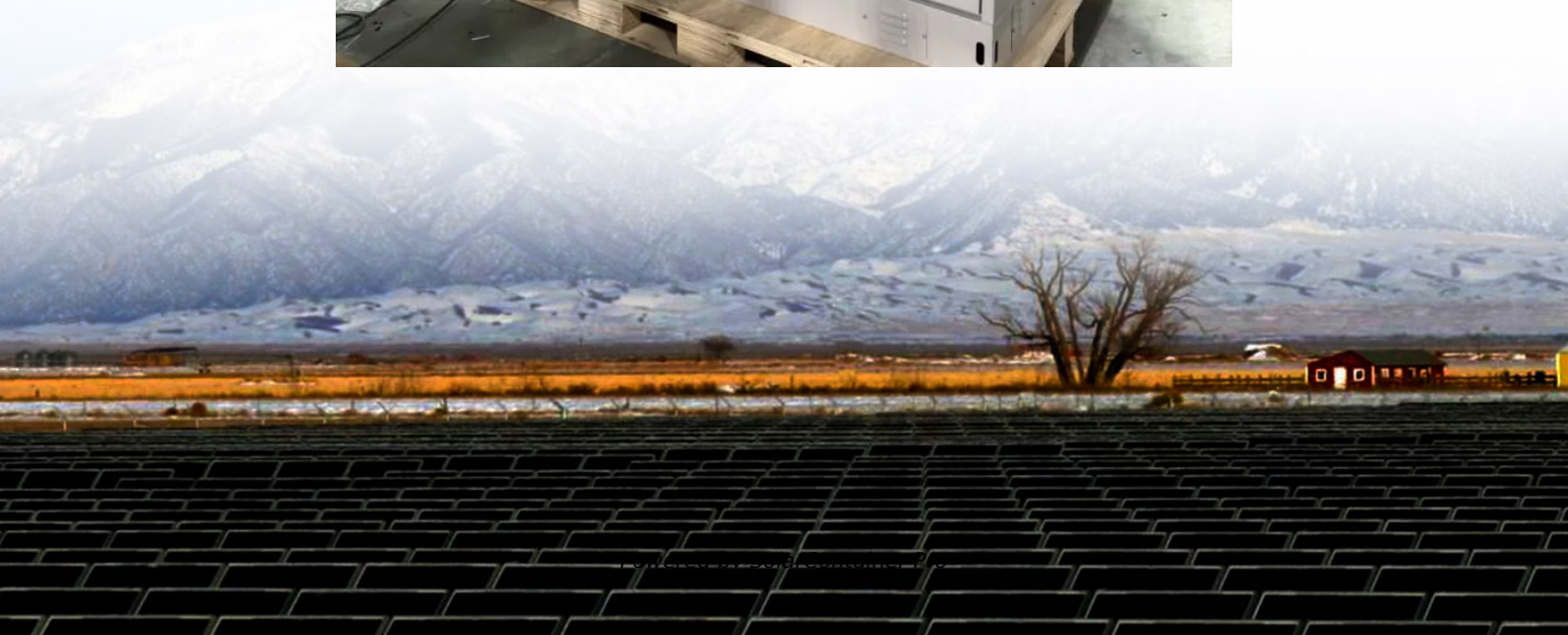


Outdoor power supply matching solution





Overview

How to match a power adapter to a device?

When it comes to matching your power adapter to your device, one crucial aspect to consider is the connector type. Different devices require different connector types to establish a proper connection with the power adapter. Here are some useful tips to help you in identifying and selecting the correct connector type for your device. 1.

How do I know if I need a power supply?

To start, check the device's manual or look for a label on the device itself. Look for information about the required voltage and amperage. For example, you might find that your device requires 12 volts and 2 amps. These specifications are often expressed as V (for voltage) and A (for amperage).

How do I choose a power adapter?

When it comes to choosing a power adapter for your device, you will come across two main options: universal and specific adapters. Understanding the pros and cons of each type can greatly help in making an informed decision. Universal adapters, as the name suggests, are designed to work with a wide range of devices.

How do I find a compatible power adapter?

Determine the connector's size and shape: Take note of the physical characteristics of the connector, such as its size and shape. Measure the outer and inner diameter, the length, and the number of pins or prongs if applicable. This information will be useful when searching for a compatible power adapter. 3.



Outdoor power supply matching solution



How to Choose the Best Charging Method for an Outdoor Power ...

Below, we will introduce several common outdoor power supply methods and their typical application scenarios to help you make an informed decision for your next camping trip, ...

[WhatsApp](#)

A Complete Guide to Outdoor Lighting Power Supply Solutions

To ensure your outdoor lights operate effectively and reliably, selecting the right power supply is key. This guide will walk you through everything you need to know about outdoor lighting ...

[WhatsApp](#)



How to Choose the Best Charging Method for an Outdoor Power Supply

Below, we will introduce several common outdoor power supply methods and their typical application scenarios to help you make an informed decision for your next camping trip, ...

[WhatsApp](#)



AC Power Supply for Outdoor Environments , QTL formerly Q-Tran

Explore QTL's array of power supply solutions designed specifically for commercial outdoor LED lighting with our Outdoor Rated (AC) offerings.



Experience a blend of high quality, superior ...

[WhatsApp](#)



SG400E power supply mode full analysis: 3 solutions for precise matching

Did the chip get damaged due to the wrong power connection during programming? The voltage of the target board and the programmer does not match? The triple power supply ...

[WhatsApp](#)



How Do You Choose the Right Power Supply for Outdoor LED ...

To choose the right power supply, you must match its voltage to your strip, calculate the total wattage plus a 20% safety buffer, and ensure it has an IP67 waterproof rating and ...

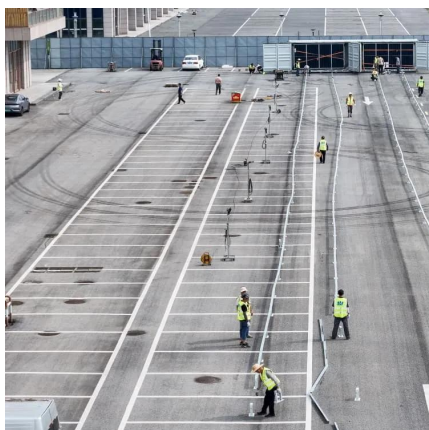
[WhatsApp](#)



[LED Dimmable Power Supplies . GL LED US LIGHTING](#)

HOW to Choose the Best Power Supply for LED Strip Lights Select a power supply that matches the voltage and wattage of your LED strips. Calculate total wattage and add a 25% buffer for ...

[WhatsApp](#)

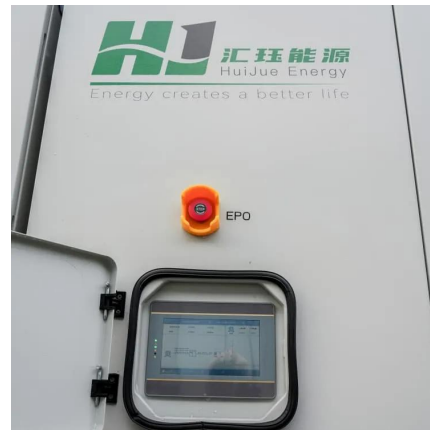




[Outdoor Power Cables at Tractor Supply Co.](#)

Outdoor power cables are essential for any farm, garden, or outdoor workspace, providing the reliable connection needed to power tools and equipment efficiently. Whether you're tackling a ...

[WhatsApp](#)



How to Choose the Power Supply for Outdoor Lighting Fixtures

This article will delve into how to select the power supply for outdoor lighting fixtures, including considerations for different types of fixtures and their specific requirements.

[WhatsApp](#)



Bringing The Indoors Out: The Ultimate Guide to Outdoor Power ...

In the sections below, we will discuss common outdoor power solution features, current market trends, common outdoor power applications, and - most importantly - offer tips on how to ...

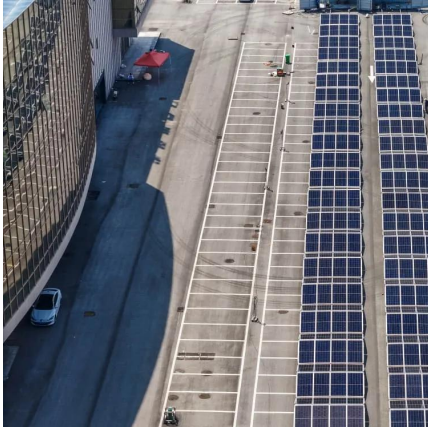
[WhatsApp](#)



How do I match my power adapter to device: A Simple Guide

Understanding how to match a power adapter to a device is essential to ensure proper functionality and prevent any potential damage. In this simple guide, we will explore the ...

[WhatsApp](#)



Contact Us

For catalog requests, pricing, or partnerships, please visit:
<https://www.straighta.co.za>