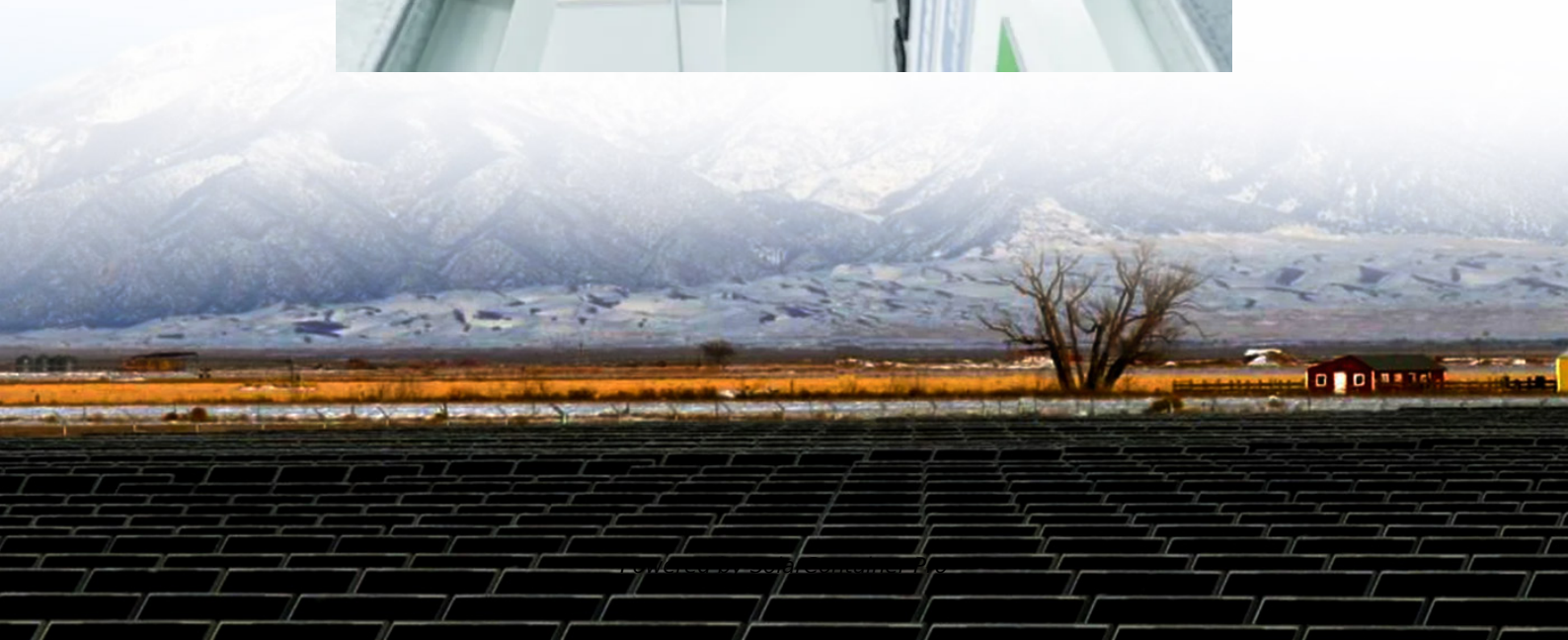


Outdoor power distribution points





Overview

What is a power distribution box?

Electric power is an essential element of every building and event, power distribution is the final delivery point of electricity. To make power safe and readily available for multiple users a rugged power distribution box is a good solution. Power Distribution Units (PDU) are often referred to as a Spider Box, Pagoda Box or a Circuit Box.

What is a rugged power distribution box?

To make power safe and readily available for multiple users a rugged power distribution box is a good solution. Power Distribution Units (PDU) are often referred to as a Spider Box, Pagoda Box or a Circuit Box. For the sake of this article we will refer to them as PDU's.

What is a power distribution unit (PDU)?

Power Distribution Units (PDU) are often referred to as a Spider Box, Pagoda Box or a Circuit Box. For the sake of this article we will refer to them as PDU's. They are used in temporary power situations to power tools, computers, fans, HVAC units, and lights.

What is a portable power distribution unit?

It has been designed according to the North American needs of temporary power distribution systems, especially outdoor atmospheric conditions and safety measures. Portable Power Distribution Units are sized based on current draw and will come with the appropriate circuit protection devices.

How much does a power distribution unit cost?

Furthermore, the design needs to be economical, there are so many variations and specifications to follow that consumers may choose the wrong set-up for their needs. A typical domestic-level Power Distribution Unit costs around \$600, whereas the cost of a commercial scale PDU can cost in upwards of



\$2000.

Do you need a temporary power distributor?

As electric supply lines are not available everywhere, you can always use an electric generator along with a temporary power distributor to build a safe power system for uninterrupted power supply. Apart from using these PDUs at temporary locations, they are also used in events where electric supply is easily accessible.



Outdoor power distribution points



Outdoor Subpanel: Essential Guide for Efficient Power Distribution

If you're considering expanding your electrical capacity for outdoor projects, an outdoor subpanel might be the solution you need. This panel allows you to manage additional ...

[WhatsApp](#)

[How we solve Outdoor Power Distribution](#)

Electric power is an essential element of every building and event, power distribution is the final delivery point of electricity. To make power safe and readily available for multiple users a ...

[WhatsApp](#)



What is a Feeder Pillar? A Guide to Outdoor Power Distribution

Wondering what a feeder pillar is and why it's essential for outdoor power systems? From powering street lights to industrial sites, feeder pillars are unsung heroes of ...

[WhatsApp](#)

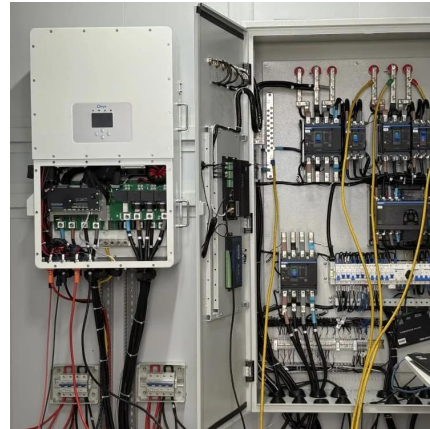
Bringing The Indoors Out: The Ultimate Guide to Outdoor Power ...

When exploring the wide selection of outdoor power and charging solutions, it's easy to feel overwhelmed. To help you find the right solution



for your facility, this article will give an ...

[WhatsApp](#)



Understanding power distribution units for outdoor spaces

2 days ago· George Parker, Director of Pop Up Power Supplies, answers five of the most common questions asked by specifiers and site owners regarding power distribution units for ...

[WhatsApp](#)



[How we solve Outdoor Power Distribution](#)

Power Distribution Units (PDU) are often referred to as a Spider Box, Pagoda Box or a Circuit Box. For the sake of this article we will refer to them as PDU's. They are used in temporary ...

[WhatsApp](#)



Outdoor Subpanel: Essential Guide for Efficient Power Distribution

This panel allows you to manage additional circuits away from your main panel, providing convenience and safety for outdoor lighting, power tools, or even electric vehicles.

[WhatsApp](#)



An Introduction to Exterior Electrical Power Distribution

The design criteria and standards contained within are the minimum requirements acceptable for installations for efficiency, economy, durability, maintainability, and reliability of electrical power ...

[WhatsApp](#)



How we solve Outdoor Power Distribution

The design criteria and standards contained within are the minimum requirements acceptable for installations for efficiency, economy, durability, maintainability, and reliability of electrical power ...

[WhatsApp](#)



Power Distribution , Outdoor Power Units & Bollards , Kent Stainless

We are the world's no.1 manufacturer of in-ground power distribution units. Our products are customized, made with high-quality stainless steel & weatherproof.

[WhatsApp](#)



Contact Us

For catalog requests, pricing, or partnerships, please visit:
<https://www.straighta.co.za>