

Outdoor power charging pile conversion





Overview

What is a charging pile?

Along with this comes the rapid development of charging stations and charging piles. A charging pile is similar to a charging station where AC power is converted to DC power to charge the battery of the vehicle. However, a charging pile can just be an AC to AC conversion with more focus on diagnostics and monitoring.

How many watts can a charging pile charge?

The maximum charging power of the AC charging pile is 7KW, the charging power of the DC charging pile is generally 60KW to 80KW, and the input current of a single gun can reach 150A--200A, which is a huge test for the power supply line. In some old community, even one can't be installed there.

What are the different types of charging piles?

The most common type on the market is a 50-150KW charging pile, while the mainstream is a 100-120KW charging pile. PANJIT offers a series of MOSFETs and high-power IGBT products for different power ranges, providing a comprehensive solution for power management and conversion. [System Block Diagram Touch to explore related products.](#)

What are electric car charging piles?

Electric car charging piles are fixed on the ground, and they provide AC electric energy for electric cars with on-board chargers by using special charging interface and conduction mode. They have corresponding communication, charging and safety protection functions. [Have You Ever Used Portable EV Charging Cable?](#)

.

What is a Level 3 charging pile?



While Level III fast-charging is primarily DC, there is an AC version as well. The commonality with charging piles is that they do less power management (conversion) and more energy monitoring, diagnostics and communications – which are all necessary for commercial applications.

What is the protection level of indoor and outdoor charging piles?

Indoor charging piles should have a protection level of at least IP32 or above, while outdoor charging piles need to have a protection level of at least IP54 to ensure the safety of human bodies and charging equipment in harsh environments with wind, rain, and the need for better insulation and lightning protection.



Outdoor power charging pile conversion



Energy storage charging pile converted to outdoor mobile power ...

Under net-zero objectives, the development of electric vehicle (EV) charging infrastructure on a densely populated island can be achieved by repurposing existing facilities, such as rooftops ...

[WhatsApp](#)

[Energy storage charging pile power conversion standard](#)

Are power converters suitable for DC fast charging stations? However, the lack of standards in terms of protection and metering made their spread limited for the moment. Moreover, the ...

[WhatsApp](#)



[Pile on to a charger my EV needs power](#)

A charging pile is similar to a charging station where AC power is converted to DC power to charge the battery of the vehicle. However, a charging pile can just be an AC to AC conversion ...

[WhatsApp](#)

Electric Vehicle Charging Pile Power Polarity Automatic Conversion

Power polarity active conversion module and single electric vehicle charging pile, power polarity active conversion module consists of



relay, first diode and first capacitor, Single ...

[WhatsApp](#)



Energy storage charging pile converted to outdoor charging

TL;DR: In this article, an energy storage charging pile consisting of an AC/DC conversion unit with a plurality of isolated bidirectional charging/discharging AC and DC conversion modules,

[WhatsApp](#)



[Energy storage charging pile conversion DC power cable](#)

This paper introduces a new energy electric vehicle DC charging pile, including the main circuit topology of the DC charging pile, Vienna rectifier, DC transformer composed of

[WhatsApp](#)



[New energy vehicle charging pile classification](#)

DC charging piles are mainly used for DC fast charging of electric vehicles. They integrate power conversion, charging control, human-computer interaction control, communication, billing and ...

[WhatsApp](#)





AC charging pile of electric vehicle and intelligent charging ...

2.1 Working principle of AC charging station The AC charging station is a power supply device for electric vehicles with built-in chargers to conduct AC electricity according to the structure. The ...

[WhatsApp](#)



Ac Charging Pile Conversion Plug

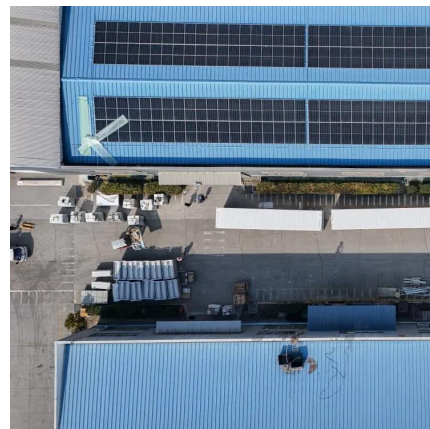
Efficient and stable charging, waterproof, high temperature resistance, flame retardant and impact resistance, to meet the needs of various outdoor plug specifications (16A three-plug, 10A three ...

[WhatsApp](#)

AC vs DC Charging Piles: 4 Key Differences & Selection Guide

Understanding the differences between AC and DC charging piles. Compare their charging method, construction costs, charging speeds, and applications for your EV ...

[WhatsApp](#)



How to Convert a Charging Pile into an Outdoor Power Supply A ...

Meta Description: Discover how to repurpose EV charging piles into versatile outdoor power sources. Learn compatibility checks, safety protocols, and real-world applications for DIY ...

[WhatsApp](#)



14KW Vertical Cabinet AC Charging Pile (Operation Version)

The product integrates power conversion, charging control, human-computer interaction control, communication, billing and metering, and has good dustproof and waterproof functions, and ...

[WhatsApp](#)



[A DC Charging Pile for New Energy Electric Vehicles](#)

New energy electric vehicles will become a rational choice to achieve clean energy alternatives in the transportation field, and the advantages of new energy electric vehicles rely ...

[WhatsApp](#)

[Electric Vehicle Charging Pile Manufacturer , HBE](#)

It can work safely indoors and outdoors (with a rain-proof shed).The power conversion unit of the charging pile follows the modular design principle to meet the charging needs of electric ...

[WhatsApp](#)





Contact Us

For catalog requests, pricing, or partnerships, please visit:
<https://www.straighta.co.za>