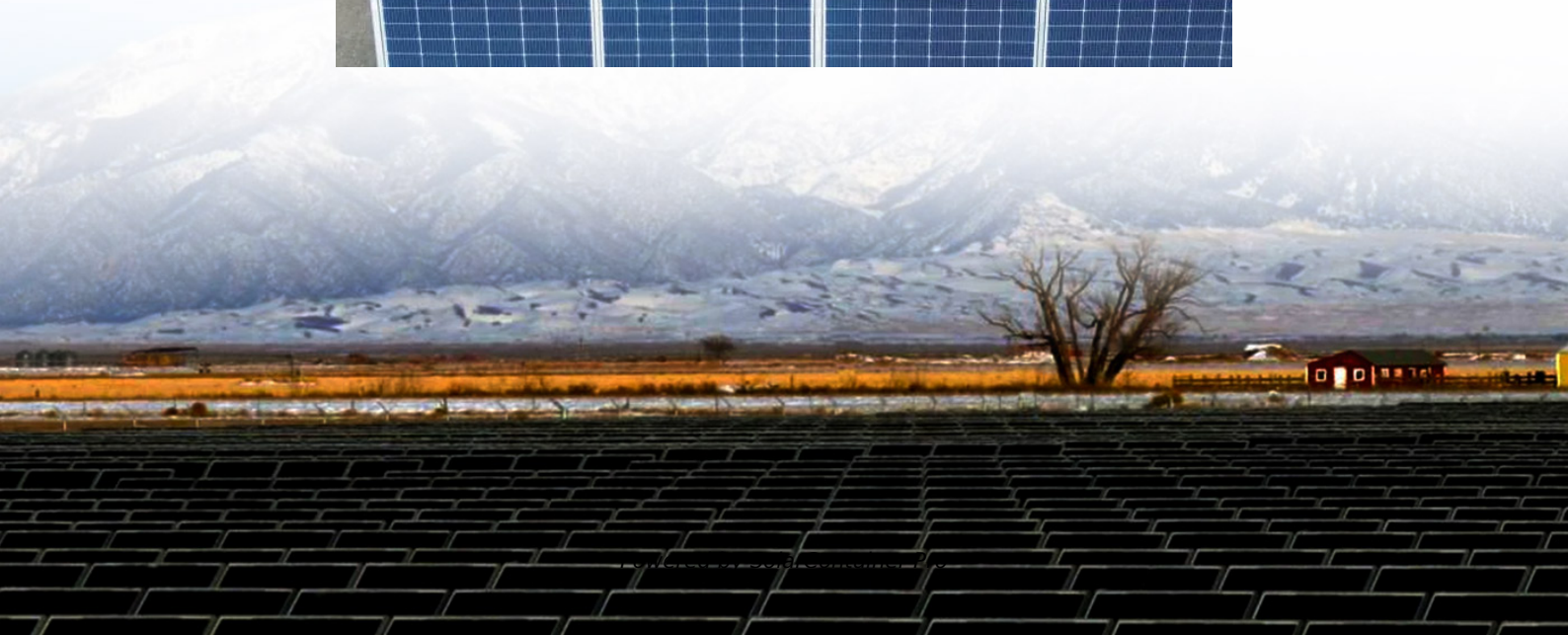


Outdoor base station installation method





Overview

To attach the Base Station on a pole: □ Attach the Base Station to the pole using the supplied hose clamps as shown below.

For safety and to achieve a good installation, please follow these safety precautions: Consider safety and performance when selecting an installation site. Remember.

Note: Package contents vary by model. Connector Locations .

For additional documentation including hardware specifications, PoE application notes, and steps for using AEP, mLinux, and LoRa, go to.

To attach the mounting bracket to the Base Station: □ Attach the bracket to the back of the Base Station using the supplied screws and.

How do you mount a base station?

You can also use tripods, light stands, or cargo poles when mounting the base stations, or even place it on stable book cases. Just avoid using unstable mounting solutions or surfaces that are prone to vibration. Adjust the base stations so that the front panels are facing toward the center of the play area.

How do I set up the base stations?

You may set up the base stations in a way that's suitable for your place. For best results, you may follow these recommendations: Mount the base stations diagonally and above head height, ideally more than 2 m (6 ft 6 in). Secure the base stations in a location where they can't be easily jostled or moved.

How should a base station antenna be installed?

The hardware installation guidelines are limited but important for reliable base station performance. The base station antenna should be installed in open sky conditions, away from external influences that hinder the direct line of sight between the antenna and the GNSS satellites.

Can I install a base station CB system in my home?



Yes, but with limitations. Consider indoor antennas, magnetic balcony mounts, or window feedthrough antennas. Always check lease agreements and be respectful of neighbors regarding interference. Setting up a base station CB system opens a world of communication possibilities far beyond what mobile installations offer.

Where should an antenna be installed?

In general, this means that the ideal antenna installation is near the centre of the work area. For larger work areas (several 10's of km's), it is advised to place several base stations for optimal performance and easy selection of the nearest base station.

How much does a base station CB cost?

HOA and Zoning: Check local regulations and homeowner association rules before installing visible antennas. How much does a complete base station CB setup cost?

Basic setups start around \$300-500, including radio, antenna, coax, and power supply. Mid-range systems run \$500-1000, while premium installations can exceed \$2000.



Outdoor base station installation method



Spectralink 6000 Portfolio Outdoor Base Station: Installation ...

This document covers the installation of the Outdoor Base Station in a variety of situations. It supplements the installation documentation for the Spectralink 6000 System using either the ...

[WhatsApp](#)

Base station types: a solution for every deployment scenario

Transportable base stations Due to the characteristics of size and ability to operate in hostile environmental conditions that we have reviewed in outdoor base stations, ...

[WhatsApp](#)



[How to set up a base station - Chapter 3: Hardware ...](#)

This is the third of a series of articles dealing with how to correctly set up a base station. This article provides details on how to handle the physical installation ...

[WhatsApp](#)



MultiConnect Conduit(TM) IP67 Base Station Connector Locatio

Attaching the Mounting Bracket To attach the mounting bracket to the Base Station: Attach the bracket to the back of the Base Station using the



supplied screws and washers as shown.

[WhatsApp](#)



[SimpliSafe Home Security Setup & Installation](#)

SimpliSafe Home Security Setup & Installation - This video covers the full setup and installation of the SimpliSafe home security system. It's so easy to do and activate, watch my video and see.

[WhatsApp](#)



Outdoor Base Station Spectralink 6000 RCO400, RCO410, ...

This installation guide covers the installation of the Spectralink 6000 Outdoor Base Station models RCO400, RCO410 and RHO400, designed for harsh environments. It includes steps for ...

[WhatsApp](#)



How to set up a base station - Chapter 3: Hardware installation

This is the third of a series of articles dealing with how to correctly set up a base station. This article provides details on how to handle the physical installation of the base station setup.

[WhatsApp](#)





[Installing the Base Station Outdoor Unit \(ODU\) 4](#)

The following materials are required to install the base station ODU, depending on your site specific requirements. See "Ancillary Equipment" on page 10 for a list of recommended ...

[WhatsApp](#)



Contact Us

For catalog requests, pricing, or partnerships, please visit:
<https://www.straighta.co.za>