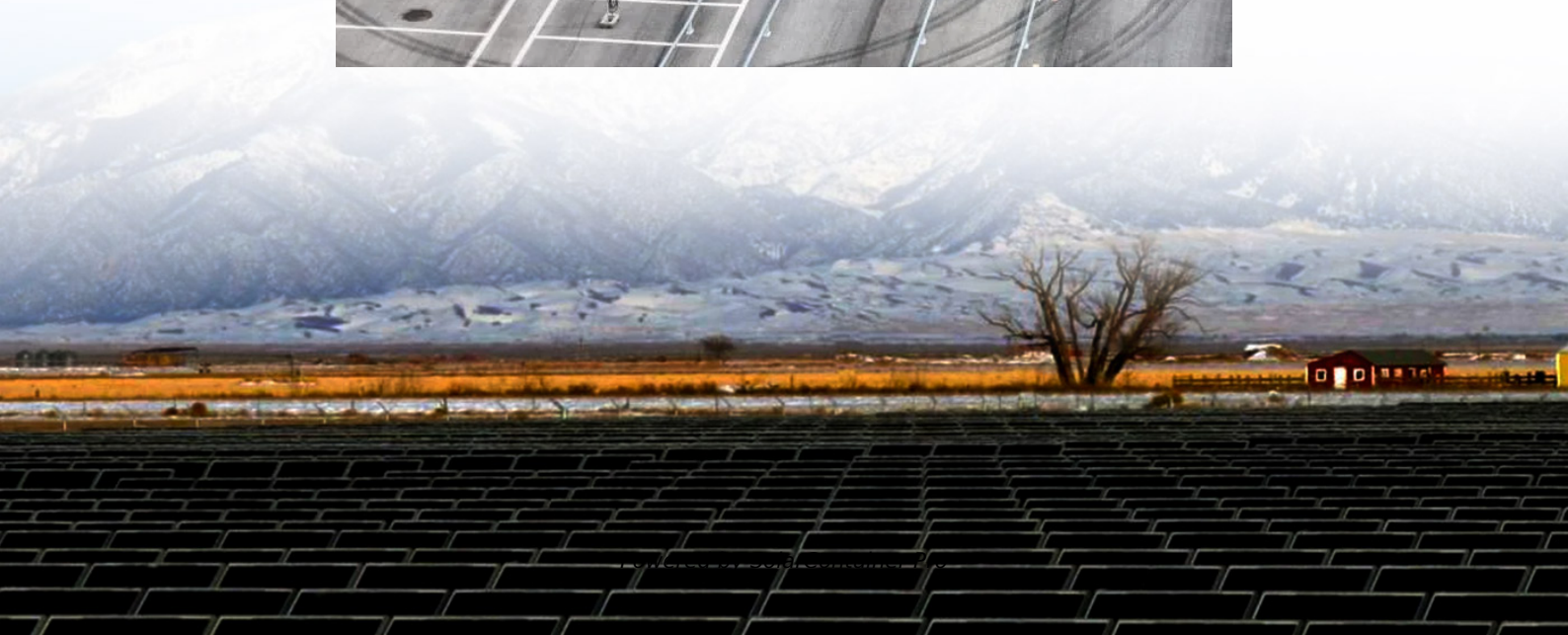
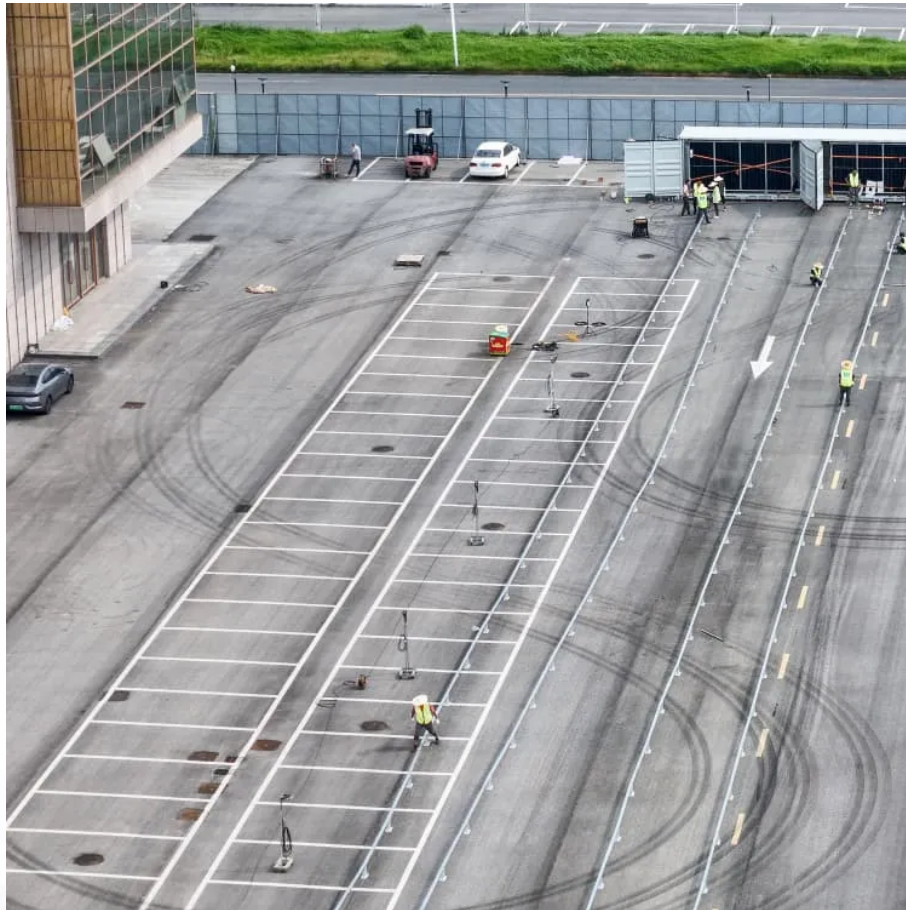


# **Operator base station communication principle**





## Overview

---

The base station subsystem (BSS) is the section of a traditional which is responsible for handling traffic and signaling between a and the network switching subsystem. The BSS carries out of speech channels, allocation of radio channels to mobile phones, , and reception over the and many othe.

What is a base station in telecommunications?

In telecommunications, a base station is a fixed transceiver that is the main communication point for one or more wireless mobile client devices. A base station serves as a central connection point for a wireless device to communicate.

What is a mobile communication base station?

Mobile communication base station is a form of radio station, which refers to a radio transceiver station that transmits information between mobile phone terminals through a mobile communication exchange center in a certain radio coverage area.

How does a base station communicate with a client device?

Generally, if client devices wanted to communicate to each other, they would communicate both directly with the base station and do so by routing all traffic through it for transmission to another device. Base stations in cellular telephone networks are more commonly referred to as cell towers.

How does a base station work?

It usually connects the device to other networks or devices through a dedicated high bandwidth wire of fiber optic connection. Base stations typically have a transceiver, capable of sending and receiving wireless signals; Otherwise if they only send the trailer it will be considered a transmitter or broadcast point only.

What is a base transceiver station (BSc)?

The BSC is responsible for managing and controlling multiple Base Transceiver



Stations (BTS) within a given area, allowing for the efficient use of radio resources and improved network performance. In this article, we will discuss the functions, architecture, and key features of a BSC. The primary functions of a BSC are:.

Is a base station a transmitter or broadcast point?

Base stations are generally a transceiver, capable of sending and receiving wireless signals; otherwise, if they only transmitted signals out, they would be considered a transmitter or broadcast point. A base station will have one or more radio frequency (RF) antennas to transmit and receive RF signals to other devices.



## Operator base station communication principle

---



### 6G shared base station planning using an evolutionary bi-level ...

To improve the utilization of infrastructure resources and reduce the cost of operators in the future 6G network construction, a 6G shared base stations optimization model ...

[WhatsApp](#)

### Base station, WiFi, IP positioning principle introduction and

Base station positioning is the difference in the base station signal by mobile communication, and by switching the base station when the base station is turned on, the base station is close to ...

[WhatsApp](#)



### Understanding Base Transceiver Stations: The Backbone of ...

Introduction to Base Transceiver Stations Base Transceiver Stations (BTS) form the backbone of mobile networks. They are integral in ensuring seamless connectivity and ...

[WhatsApp](#)

### The Base Station in Wireless Communications: The Key to ...

Equipped with an electromagnetic wave antenna, often placed on a tall mast, the base station enables communication between mobile



terminals (such as mobile phones or ...

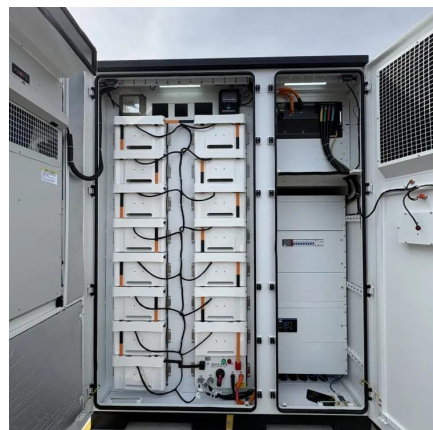
[WhatsApp](#)



### **Explain the role of a Base Station Controller (BSC) in GSM.**

The Base Station Controller (BSC) is a critical component in a GSM (Global System for Mobile Communications) network. It plays a central role in managing multiple Base ...

[WhatsApp](#)



### **Types and Applications of Mobile Communication Base Stations**

The construction of mobile communication base stations is an important part of the investment of mobile communication operators, and is generally carried out around factors ...

[WhatsApp](#)



### **Understanding Base Station Controller Architecture: A ...**

It orchestrates the activities of base stations, managing the allocation of resources, handovers, and call set-ups, thus the mobile switching center and ensuring seamless ...

[WhatsApp](#)





## An Overview of Multi-Operator Global Systems for Mobile Communications

However, there are serious technical challenges militating rapid installation of base stations, such as environmental congestion, high capital expenditure (CAPEX), multiple ...

[WhatsApp](#)



### Base station subsystem

OverviewBase transceiver stationBase station controllerPacket control unitBSS interfacesSee also

The base station subsystem (BSS) is the section of a traditional cellular telephone network which is responsible for handling traffic and signaling between a mobile phone and the network switching subsystem. The BSS carries out transcoding of speech channels, allocation of radio channels to mobile phones, paging, transmission and reception over the air interface and many othe...

[WhatsApp](#)

### [INTRODUCTION TO CELLULAR MOBILE RADIO ...](#)

The base stations consist of several transmitters and receivers, which simultaneously handle full duplex communications and generally have towers that support several transmitting and ...

[WhatsApp](#)



## Contact Us



For catalog requests, pricing, or partnerships, please visit:  
<https://www.straighta.co.za>