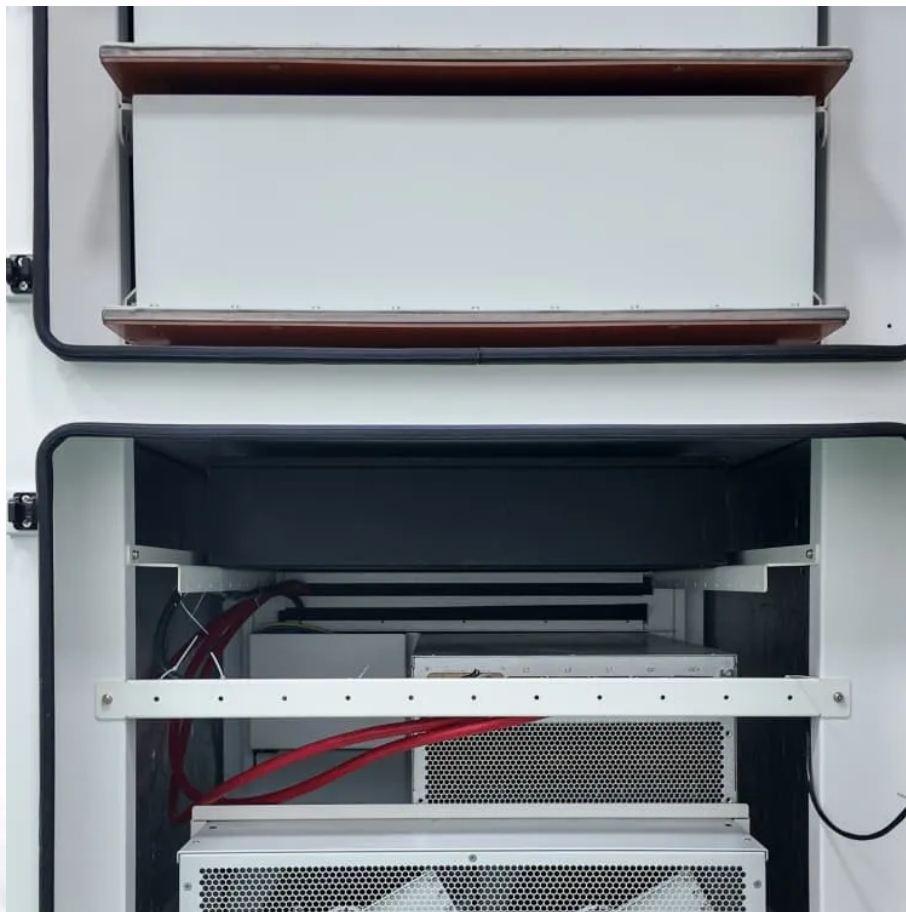


Number of simultaneous communication users on the base station





Overview

What are the properties of a base station?

Here are some essential properties: Capacity: Capacity of a base station is its capability to handle a given number of simultaneous connections or users. Coverage Area: The coverage area is a base station is that geographical area within which mobile devices can maintain a stable connection with the base station.

Why are base stations important in cellular communication?

Base stations are important in the cellular communication as it facilitate seamless communication between mobile devices and the network communication. The demand for efficient data transmission are increased as we are advancing towards new technologies such as 5G and other data intensive applications.

What is a base transceiver station?

True/false A base transceiver station (BTS) is the equipment found at a cell site that facilitates the communication of cell phone users across a cellular network. True/false the mobile switching center (MSC) is responsible for switching data packets from one network path to another on a cellular network.

What is a massive MIMO system with n user terminal and m antenna?

Figure 19 shows a massive MIMO system with N user terminal and M antenna at the base station. All the signals transmitted by N user terminal travel through a different wireless path and superimpose at the base station, which makes signal detection at the base station complex and inefficient.

Why do base stations use orthogonal pilot signals in neighboring cells?

If the pilot signals in the home cell and neighboring cells are orthogonal, the base station obtains the accurate estimation of the channel. However, the



number of orthogonal pilot signals in given bandwidth and period is limited, which forces the reuse of the orthogonal pilots in neighboring cells .

What are the different types of base stations?

Some basic types of base stations are as follows: Macro-base stations are tall towers ranging from 50 to 200 feet in height, placed at strategic locations to provide maximum coverage in a given area. Those are equipped with large towers and antennas that transmit and receive radio signals from wireless devices.



Number of simultaneous communication users on the base station



Multiple Transmission Reception Point Architecture in 5G

The users on the cell-edge are usually served with a low quality-of-Service (QoS) due to the comparatively long distance from the base station and unfavorable channel conditions (e.g., ...

[WhatsApp](#)

ELEMENTS OF WIRELESS COMMUNICATIONS

Each base station is allocated a portion of the total number of channels available to the entire system, and nearby base stations are assigned different groups of channels so that all the ...

[WhatsApp](#)



[INTRODUCTION TO CELLULAR MOBILE RADIO ...](#)

Each mobile communicates via radio with one or more base stations. A call from a user can be transferred from one base station to another during the call. The process of transferring is ...

[WhatsApp](#)



[Multiuser capacity and opportunistic communication](#)

ave very disparate channels from the base-station. Due to the spatial geometry, typically there are only a few users close to the base-



station where most of the users are near the edge of the cell. ...

[WhatsApp](#)



[LTE 4G simultaneous connected devices for one cell site](#)

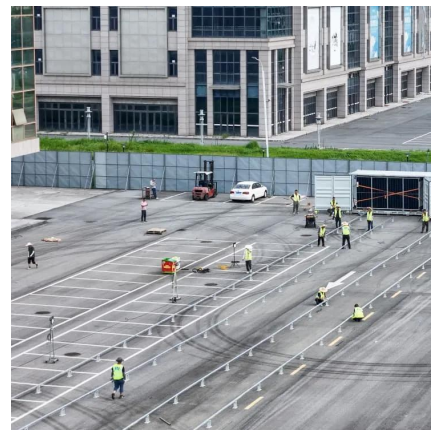
I'm trying to find out how many simultaneous connected devices can handle a typical LTE 4G or 3G public cell site. I know my question sounds broad, but I'm developing an mobile ...

[WhatsApp](#)

[Massive MIMO Systems for 5G and beyond ...](#)

Since there are a limited number of antennas in the massive MIMO base station, user scheduling has to be performed if the number of the users is more than the number of antenna terminals ...

[WhatsApp](#)



[Solved] The transmitted signal in a GSM system is of 200 kHz ...

The transmitted signal in a GSM system is of 200 kHz bandwidth and 8 users share a common bandwidth using TDMA. If at a given time 12 users are talking in a cell, the total bandwidth of ...

[WhatsApp](#)



Number of active base stations vs. the number of users in the ...

When green communications are implemented (Scenarios 2 and 4), the number of active BSs is reduced, until the number of users exceeds 200. This leads to energy savings in lightly loaded

[WhatsApp](#)



Solved Consider four different cellular systems that share

Question: Consider four different cellular systems that share the following characteristics. The frequency bands are 825 to 845MHz for mobile unit transmission and 870 to 890MHz for base ...

[WhatsApp](#)

Digital forensics final exam Flashcards , Quizlet

In a _____ hand-off, a cellular communication is conditionally handed off from one base station to another, and the mobile equipment is simultaneously communicating with multiple Base ...

[WhatsApp](#)



Introduction to Cellular Systems

Cell dragging problem: pedestrian users provide a very strong signal to the base station. The user may travel deep within a neighboring cell. Handoff for first generation analog cellular systems ...

[WhatsApp](#)



[LTE and The Number of Simultaneously Connected Users](#)

The document discusses the number of users that can be simultaneously connected to an LTE base station. It explains that there are three connection states - off, idle, and connected.

[WhatsApp](#)



Contact Us

For catalog requests, pricing, or partnerships, please visit:
<https://www.straighta.co.za>