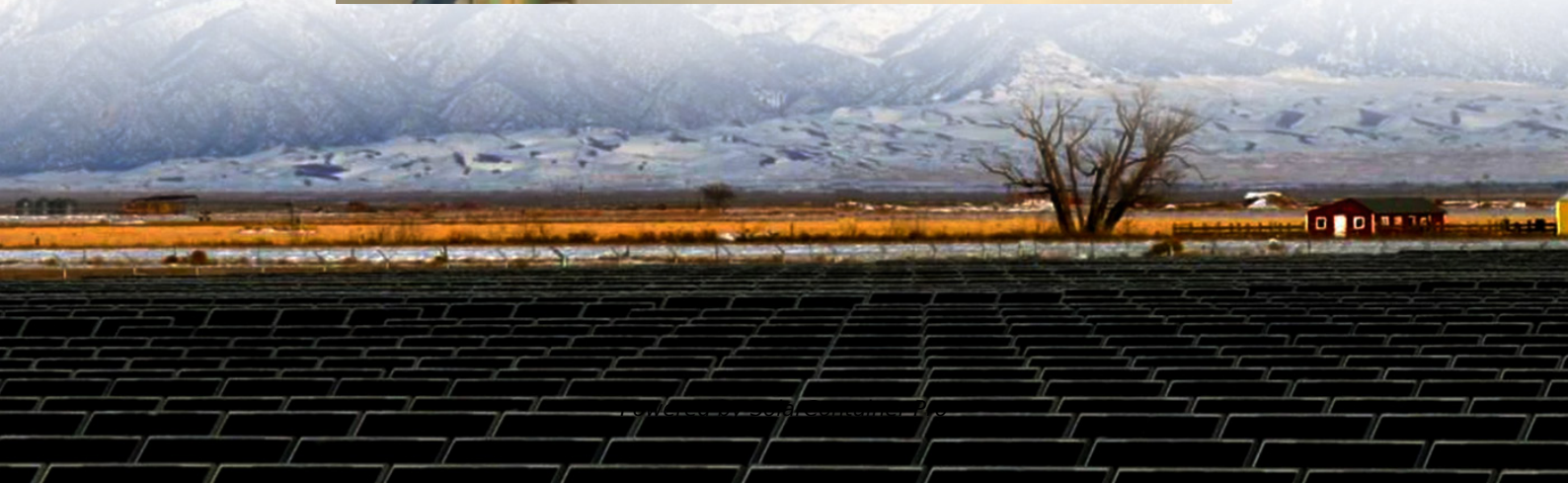


Northern solar photovoltaic panels generate electricity per square meter





Overview

How much power does a solar panel produce?

The power output of a solar panel depends on various factors, including its efficiency, the intensity of sunlight, and environmental conditions. On average, a standard solar panel with an area of 1 square foot can produce around 10-20 watts of power.

What is solar panel efficiency?

Solar panel efficiency is crucial for a solar power system's success. High-efficiency panels convert more sunlight into electricity, boosting overall output. To measure this efficiency, use solar panel Watts per square meter (W/m). This metric shows how much power a solar panel produces per square meter of surface area under standard conditions.

What is a solar power per square meter calculator?

It also includes wiring, inverter, charge controller, and battery bank (if used). A solar power per square meter calculator takes details regarding these factors and then gives the accurate output generated by the solar panel per square meter. After this, it's time to learn about solar panel output calculators.

How do you calculate solar panel output in watts per square meter?

The formula to calculate the solar panel output and how much energy solar panels produce (in watts) using watts per square meter is as follows: Solar Panel Output (W) = Watts per Square Meter (W/m²) × Area of Solar Panel (m²).

What is solar panel watts per square meter (W/M)?

Solar panel watts per square meter (W/m) measures the power output of a solar panel based on its size. Compare solar panels to see which generates most electricity per square meter. A higher W/m value means a solar panel



produces more power from a given area. This can help you determine how many solar panels you need for your energy needs.

How much solar energy is produced per square meter?

The amount of solar energy produced in Kilowatt hours per square meter (kWh/m^2) depends on the solar irradiance, which is the intensity of sunlight falling on a specific area. On a clear day with high solar irradiance, a square meter of efficient solar panels can generate around 150-250 watt-hours (Wh) of energy in an hour.



Northern solar photovoltaic panels generate electricity per square m



Use these facts in the following exercises: Solar (photovolt , Quizlet

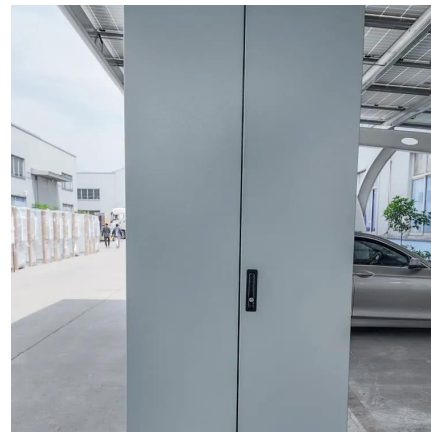
Use these facts in the following exercises: Solar (photovoltaic) cells convert sunlight directly into electricity. If solar cells were 100 % 100% efficient, they would generate about 1000 1000 ...

[WhatsApp](#)

Solar Panel Output Calculator , Get Maximum Power Output

By taking into account factors such as solar panel size, type, inverter efficiency, and location-specific solar radiation, this calculator provides a more accurate reflection of what ...

[WhatsApp](#)



How much electricity does a square meter of solar panel produce?

Areas that receive higher levels of sunlight throughout the year will generally produce more electricity per square meter of panel. Conversely, regions with lower solar ...

[WhatsApp](#)

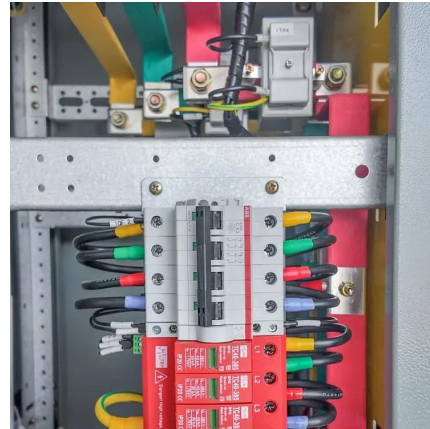
Solar Energy Per Square Meter: How Much Power Can You Get?

Solar energy per square meter refers to the amount of solar radiation impacting a specific area, measured in kilowatts per square meter



(kW/m²). This measurement is a key ...

[WhatsApp](#)



How many watts is a square meter of solar panel? , NenPower

THE EFFICIENCY OF SOLAR PANELS The efficiency of solar panels is a critical aspect that affects the total output of power generated in a square meter. Solar panel ...

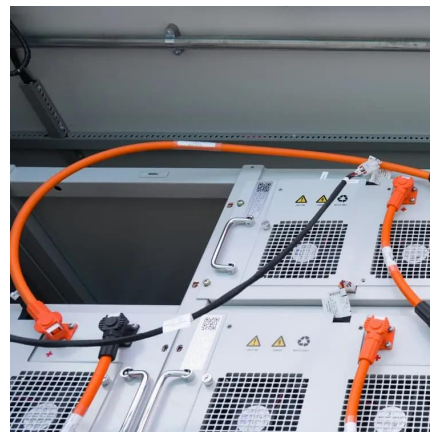
[WhatsApp](#)



Solar Panel Power Per Square Meter: How to Calculate Efficiency

Solar panel efficiency is a measure of how much sunlight a solar panel can convert into usable electricity. It is expressed as a percentage and indicates the proportion of sunlight ...

[WhatsApp](#)



Watts Per Square Meter Solar Panel

Watts per square meter (W/m²) is the power density of sunlight falling on a given area of solar panels. In the context of solar panels, it refers to the amount of electrical power a ...

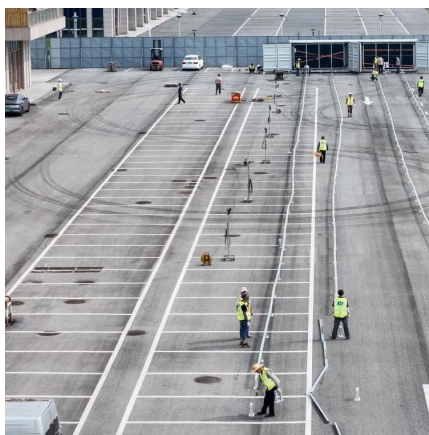
[WhatsApp](#)



[How many watts of solar photovoltaic per square meter](#)

This innovative combination enhances overall system efficiency and contributes to the sustainability of solar energy. In summary, the wattage generated by solar photovoltaic ...

[WhatsApp](#)



How Much Electricity Do Solar Panels Produce? Find Out Here

When it comes to solar panel output per square meter, the numbers can be quite revealing. On average, a solar panel produces about 186 kWh of electricity per square meter ...

[WhatsApp](#)

[How Many kWh Does A Solar Panel Produce Per Day?](#)

How many kWh can a solar panel generate a day? As a general rule, with an average irradiance of 4 peak-sun-hours/day, 1 watt of solar panel rated power will produce on average 4 watt ...

[WhatsApp](#)



By using this fact in the following exercise: Solar (photovo , Quizlet

By using this fact in the following exercise: Solar (photovoltaic) cells convert sunlight directly into electricity. If solar cells were 100 % 100% efficient, they would generate about 1000 1000 ...

[WhatsApp](#)



[SOLAR POWER PER SQUARE METER CALCULATOR](#)

100 square meter sun room photovoltaic power generation solar energy Wattage is the output of solar panelsthat is calculated by multiplying the volts by amps. Here, the amount of the force of ...

[WhatsApp](#)



Basic Solar Energy Math , Solar Power for Ordinary People

Solar Irradiance and Solar Constant Solar irradiance is the amount of sunshine incident on a unit area and is typically expressed in watts per square meter (W/m^2) or ...

[WhatsApp](#)

How much electricity does a square meter of solar panel produce?

1. A square meter of solar panel generates approximately 150 to 200 watts of electricity under ideal conditions, depending on factors such as efficiency and geo...

[WhatsApp](#)





Solar Panel Output per Square Meter: Efficiency Factors & Future ...

Solar panels have become a cornerstone of renewable energy, but many wonder: How much power can a single square meter of solar panels actually produce? Let's break down the ...

[WhatsApp](#)

How many degrees does a solar panel generate per square meter?

A solar panel can generate between 150 to 250 watts per square meter under optimal sunlight conditions, 2. The actual temperature increase can vary but generally yields ...

[WhatsApp](#)



Contact Us

For catalog requests, pricing, or partnerships, please visit:
<https://www.straighta.co.za>