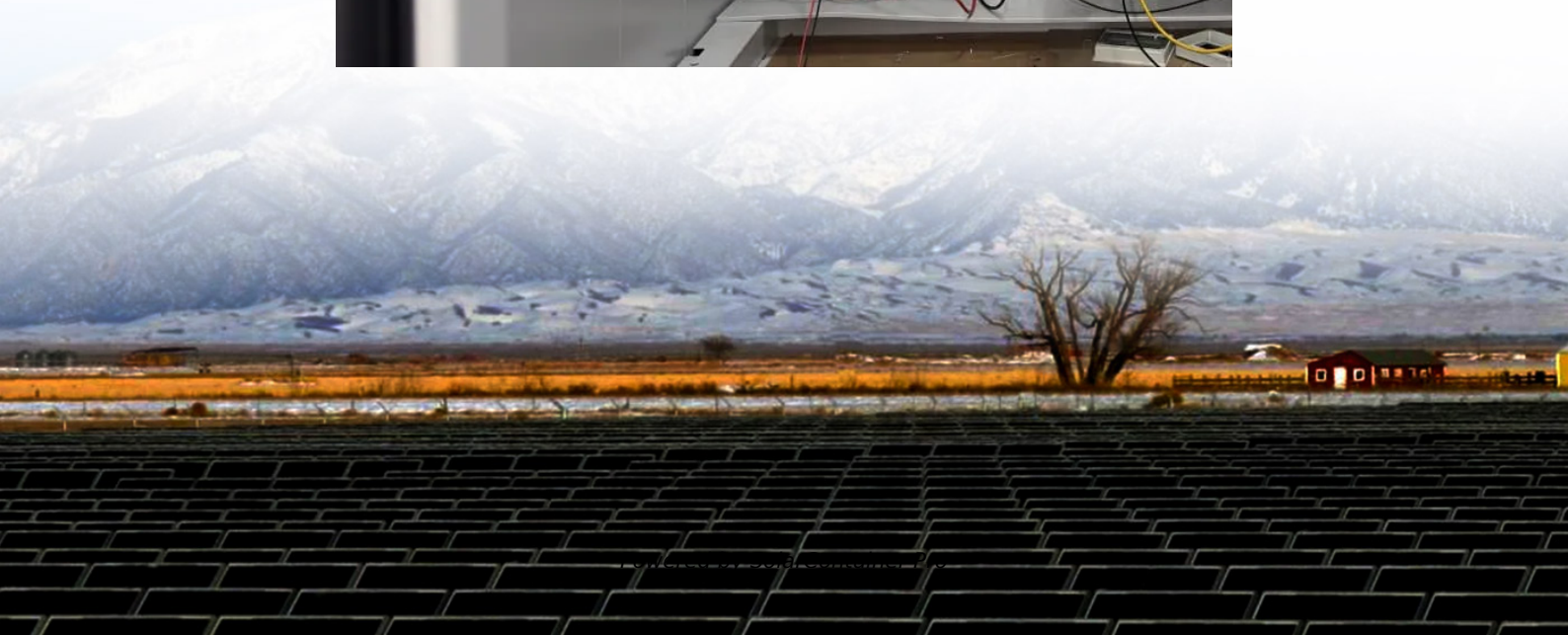
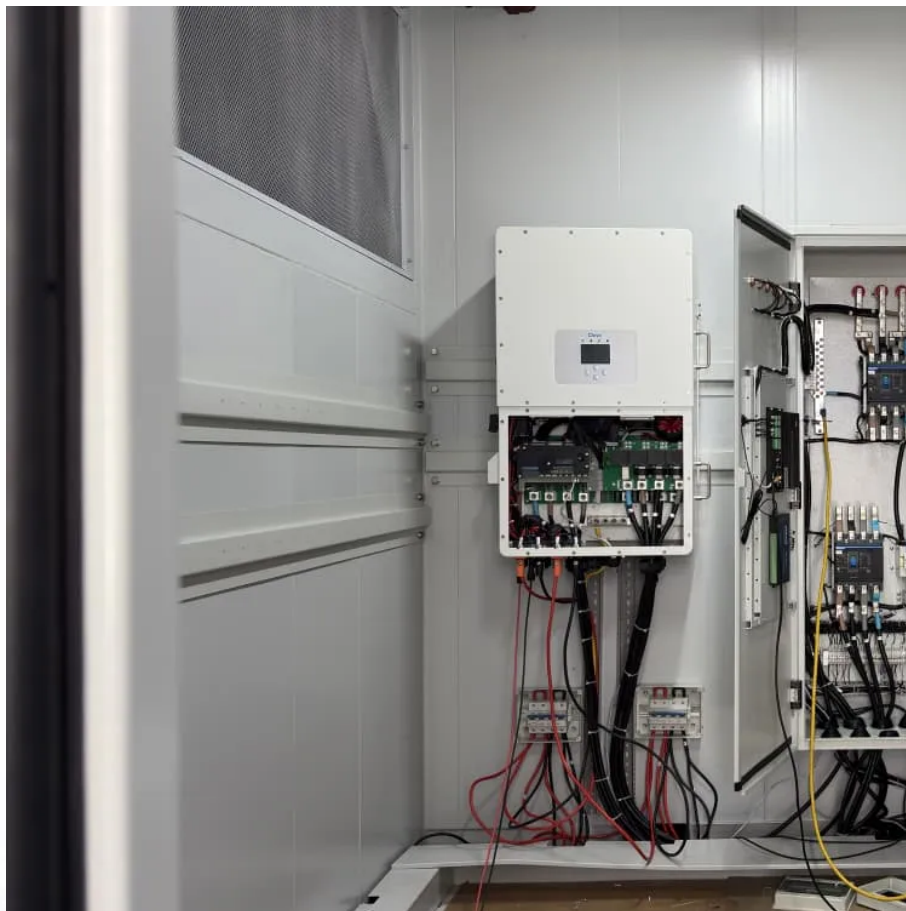


New energy sources commonly used in base stations





Overview

Since base stations are major consumers of cellular networks energy with significant contribution to operational expenditures, powering base stations sites using the energy of wind, sun, fuel cells or a combination gain mobile operators' attention. How do base stations use energy?

Since base stations are major consumers of cellular networks energy with significant contribution to operational expenditures, powering base stations sites using the energy of wind, sun, fuel cells or a combination gain mobile operators' attention.

How to make base station (BS) green and energy efficient?

This paper aims to consolidate the work carried out in making base station (BS) green and energy efficient by integrating renewable energy sources (RES). Clean and green technologies are mandatory for reduction of carbon footprint in future cellular networks.

Do mobile network operators want to power remote base stations?

It is shown that mobile network operators express significant interest for powering remote base stations using renewable energy sources. This is because a significant percentage of remote base station sites on the global level are still diesel powered due to lack of connections to the electricity grid.

What are the components of a base station?

A typical base station consists of different sub-systems which can consume energy as shown in Fig. 4. These sub-systems include baseband (BB) processors, transceiver (TRX) (comprising power amplifier (PA), RF transmitter and receiver), feeder cable and antennas, and air conditioner (Ambrosy et al., 2011).

How can radio resources be manipulated to conserve energy?

The radio resources can be manipulated to conserve energy by adapting the



capacity and/or converge of the green BS. This is demonstrated in (Valerdi et al., 2010), where both aspects are optimized according to the available renewable energy and battery back-up available.

Does energy procurement save energy & use green resources?

Overall the energy procurement model is shown to conserve energy and utilize green resources. Authors in (Elshabrawy and Mourad, 2014) have also shown that energy can be saved by adopting power aware strategies for on/off switching of BS in LTE network.



New energy sources commonly used in base stations



How Clean, Next-Gen Geothermal Could Power The World 140 ...

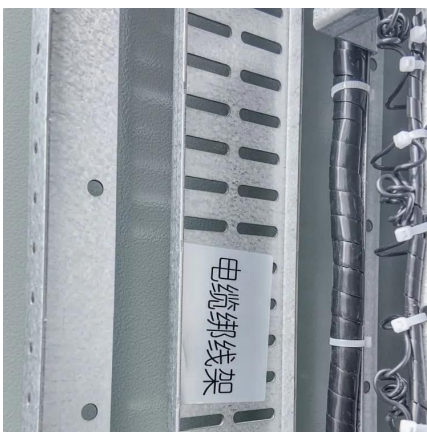
Geothermal power is stepping up. New drilling tech, pioneered by Fervo Energy, could tap heat nearly anywhere--transforming it into a global, clean baseload energy source.

[WhatsApp](#)

Energy Storage in Telecom Base Stations: Innovations & Trends

Base stations, especially in remote or off-grid areas, increasingly utilize hybrid systems combining ESS with renewable sources like solar PV or small wind turbines.

[WhatsApp](#)



When is #include library required in C++?

According to this reference for operator new: Global dynamic storage operator functions are special in the standard library: All three versions of operator new are declared in ...

[WhatsApp](#)

Resource management in cellular base stations powered by ...

This paper aims to consolidate the work carried out in making base station (BS) green and energy efficient by integrating renewable energy



sources (RES). Clean and green ...

[WhatsApp](#)



[What does "where T : class, new \(\)" mean?](#)

The new () Constraint lets the compiler know that any type argument supplied must have an accessible parameterless--or default--constructor So it should be, T must be a class, ...

[WhatsApp](#)



[Difference between 'new operator' and 'operator new'?](#)

A new expression is the whole phrase that begins with new. So what do you call just the "new" part of it? If it's wrong to call that the new operator, then we should not call ...

[WhatsApp](#)



What is large-scale base station energy storage? , NenPower

One key aspect is the integration of renewable sources such as solar or wind, which can be stored for use at times of peak demand or supply shortages. This capability ...

[WhatsApp](#)

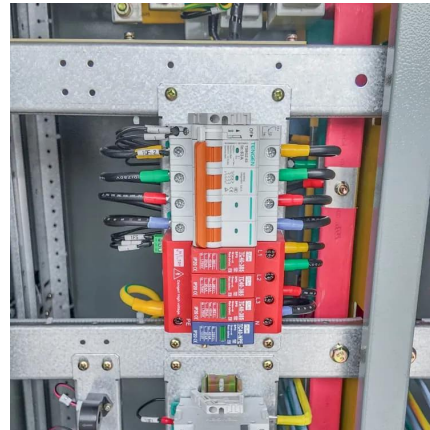




[Why do base stations need energy storage?..](#) [NenPower](#)

Energy storage systems also contribute to the incorporation of renewable energy sources, such as solar or wind, into the power supply chain of base stations. By harnessing ...

[WhatsApp](#)



[Change the "new tab" page in Microsoft edge](#)

When opening a new tab in Microsoft Edge, either via the keyboard shortcut "Ctrl+T" or via the UI (click "+ New tab", selecting "New tab" from the menu, etc.) the page ...

[WhatsApp](#)

Renewable Energy Sources for Power Supply of Base Station Sites

It is shown that powering base station sites with such renewable energy sources can significantly reduce energy costs and improve the energy efficiency of the base station sites in

[WhatsApp](#)



[Passing arguments to C# generic new \(\) of templated type](#)

The thunk is an optional parameter to the method, and I only use it if provided: `T result = thunk == null ? new T() : thunk();` The benefit of this for me is consolidating the logic of T creation in one ...

[WhatsApp](#)



Contact Us

For catalog requests, pricing, or partnerships, please visit:
<https://www.straighta.co.za>