

New Energy Disconnect the Battery Cabinet to Measure Voltage





Overview

It's important to test a battery for faults if one notices any of the following symptoms: 1. Physical issues: Look for signs of leaking, overheating, broken terminals, or bulging. 2. Inability to hold charge: If.

How do you use a multimeter with a 9v battery?

Disconnect the battery from the circuit. Rotate the knob of the multimeter and set it to 15-20V DC voltage (a battery generates DC power). Always set the dial to a higher range than the specified voltage of the battery. For a 9V battery, selecting the 15-20V range on the multimeter dial should work fine.

How to measure instantaneous current output of a battery using a multimeter?

To accurately measure the instantaneous current output of a battery using a multimeter, follow these steps: Prepare the battery and multimeter: Ensure the battery is disconnected from any circuit. This is to prevent any external circuitry from affecting the measurement. Set up the multimeter: Set the multimeter to measure DC current.

How do you measure internal resistance using voltage and current?

To measure internal resistance using voltage and current, you will need to measure the voltage of the battery under no load and then measure the voltage under a known load. No-load voltage is the voltage of the battery when it is not connected to any circuit. Voltage under load is the voltage of the battery when it is connected to a known load.

Should you disconnect a battery before testing a device?

When testing a battery in a device, it is often best to disconnect the battery from the device first. This ensures that the device does not interfere with the voltage reading. However, in some cases, such as a car battery, this may not be possible.

Why do you need to disconnect a multimeter before measuring current?



It is essential to remember that you must disconnect the battery first before measuring current. This is crucial to protect the multimeter from damage. The current measurement can provide useful insights. For example, a high current draw might indicate a short circuit or a malfunctioning component in the circuit.

What if my multimeter reads a low voltage?

If the reading shows a considerably low value (say $<1V$ for a 9V battery), the battery may be faulty or dead and needs to be replaced. The battery is typically considered dead if the multimeter reads below half the voltage level specified on the battery.



New Energy Disconnect the Battery Cabinet to Measure Voltage



Operation of Energy Storage Battery Cabinets on the Grid Side

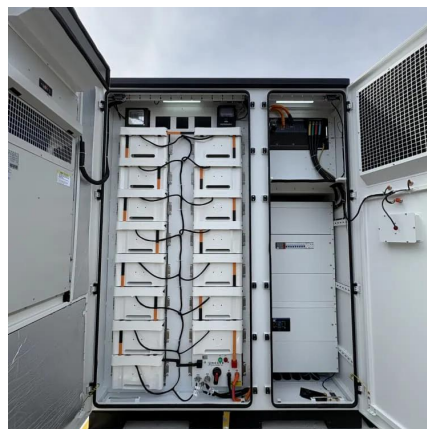
Check the battery modules, electrical connections, and cooling system for normal operation and the absence of alarms. Verify that the DC bus voltage is within the normal range ...

[WhatsApp](#)

How to Measure Battery with Multimeter? A Step-by-Step Guide

Measuring Voltage: Measure the voltage of a battery to determine its charge level and health. Select the DC voltage setting and the appropriate range on your multimeter.

[WhatsApp](#)



DCIR Testing: Measure Battery Internal Resistance Accurately

What is DCIR? Direct Current Internal Resistance (DCIR) refers to the resistance value calculated using Ohm's Law by applying a direct current step signal to a battery and ...

[WhatsApp](#)

How Do I Integrate LiTime Battery With My Boat's Existing ...

System Compatibility and Prerequisites Before you purchase a single cable, a thorough assessment of your boat's existing electrical



system is the most critical step for a ...

[WhatsApp](#)



[Learn How to Test a Battery Using a Multimeter](#)

Disconnect the battery from the circuit. Rotate the knob of the multimeter and set it to 15-20V DC voltage (a battery generates DC power). Always set the dial to a higher range ...

[WhatsApp](#)



How much voltage does the new energy battery cabinet measure

Voltage in batteries indicates the measure of electrical potential energy stored in the battery. It represents the electric potential difference between the negative and positive terminals of the ...

[WhatsApp](#)



[The 4-Wire Measurement: Key to Accurate Battery Testing](#)

While the measuring current flows via a separate pair of cables, the voltage is measured directly at the battery points. This separation eliminates the effects of cable and ...

[WhatsApp](#)





DCIR Testing: Measure Battery Internal Resistance Accurately

Direct Current Internal Resistance (DCIR) refers to the resistance value calculated using Ohm's Law by applying a direct current step signal to a battery and measuring its ...

[WhatsApp](#)



[ZincFive BC Series UPS Battery Cabinets](#)

ZincFive BC Series UPS Battery Cabinet
Introduction The ZincFive BC Series UPS Battery Cabinet is comprised of ZincFive's Nickel-Zinc Batteries integrated into a battery cabinet with ...

[WhatsApp](#)



How To Test A Battery Using A Digital Multimeter: Step By Step ...

Knowing whether your battery is functioning correctly is an important aspect and testing that is easy with a multimeter. In this article, we will take a look at how to test a battery ...

[WhatsApp](#)



How to disconnect the energy storage high voltage cabinet

In case of energy storage failure of high-voltage switch cabinet, the high-voltage light opening cabinet cannot be closed, the power supply is not normally distributed, and the factory

[WhatsApp](#)



Contact Us

For catalog requests, pricing, or partnerships, please visit:
<https://www.straighta.co.za>