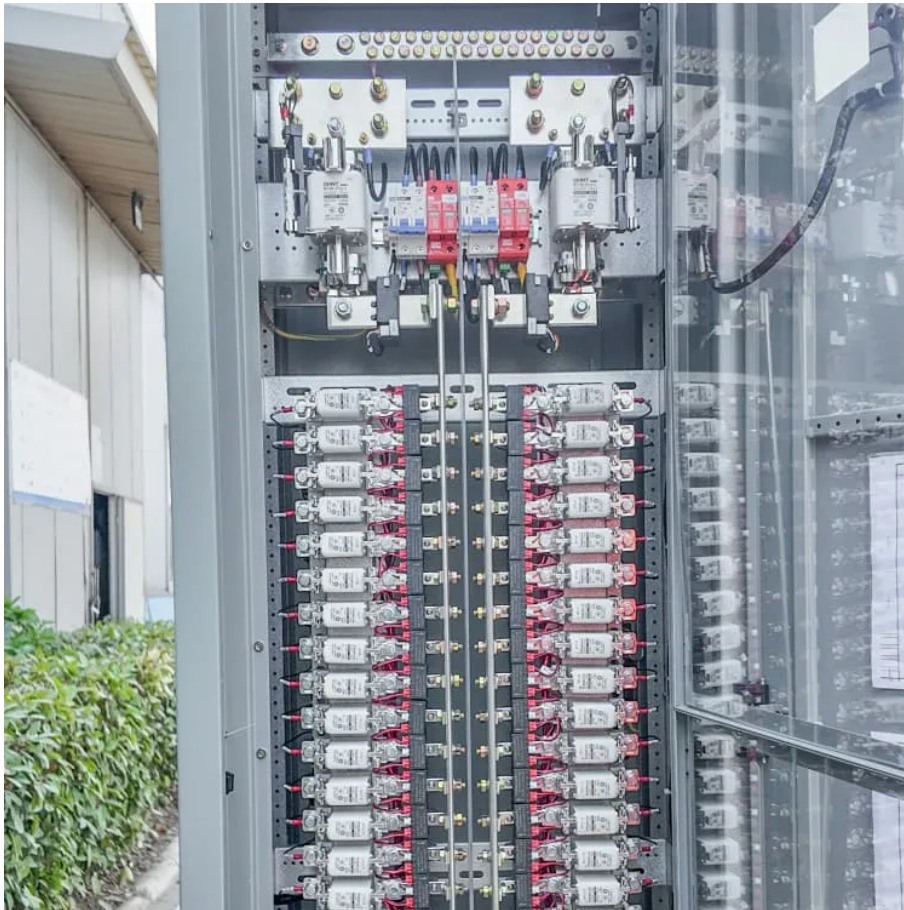


Nauru public communication base station solar panels





Overview

How will ADB support the Nauru solar power development project?

ADB also provided GoN support to prepare a Feasibility Study for the recommended Nauru Solar Power Development Project which will comprise of a 6 megawatt PV plant coupled with a 5 megawatt / 2.5 megawatt-hour battery energy storage system coupled with a SCADA installation.

How will Nauru's solar power system work?

The system will be fully integrated and automated with the existing diesel generation (17.9 MW installed capacity currently manually operated) to optimize solar energy use, to enable optimal BESS charging/discharging and to provide optimal shut off of the diesel engines. This will reduce Nauru's over reliance on diesel for power generation.

How does Nauru get its energy?

Nauru predominantly sources its energy through diesel power generators. About 5% of its current energy demand is sourced from renewable energy, of which all is from solar power photovoltaic (PV) installations. A 500-kW ground-mounted solar installation was commissioned in 2016, and a number of residences have rooftop solar PV installations.

Who will implement solar project in Nauru?

The executing agency will be the Department of Finance and Sustainable Development. The implementing agency for solar component of project will be the Nauru Utilities Corporation (NUC). NUC will establish a project management unit within their existing organisational structure to implement the project.

How many kV is a 1000 KW PV installation in Nauru?

A 1,000 kW PV installation is under construction. The electrical network comprises 11kV, 3.3KV and LV overhead lines. Asian Development Bank (ADB)



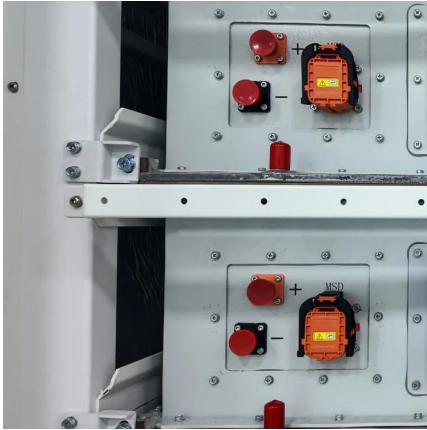
provided Government of Nauru (GoN) a transactional technical assistance TRTA to prepare a Nauru power expansion plan.

What is a Nauru power expansion plan?

The electrical network comprises 11kV, 3.3KV and LV overhead lines. Asian Development Bank (ADB) provided Government of Nauru (GoN) a transactional technical assistance TRTA to prepare a Nauru power expansion plan. The plan identified that a PV array and battery energy storage system should be constructed.



Nauru public communication base station solar panels



Solar powered cellular base stations: current scenario, issues and

Cellular base stations powered by renewable energy sources such as solar power have emerged as one of the promising solutions to these issues. This article presents an ...

[WhatsApp](#)

Solar Power Supply Systems for Communication Base Stations: ...

With continuous technological advancements and further cost reductions, solar power supply systems for communication base stations will become one of the mainstream power supply ...

[WhatsApp](#)



Nauru : Solar Power Development Project

The Solar Power Development Project will finance (i) a grid-connected solar power plant with a capacity of 6 megawatts (MW) of alternating current; and (ii) a 2.5-megawatt-hour, 5 MW ...

[WhatsApp](#)



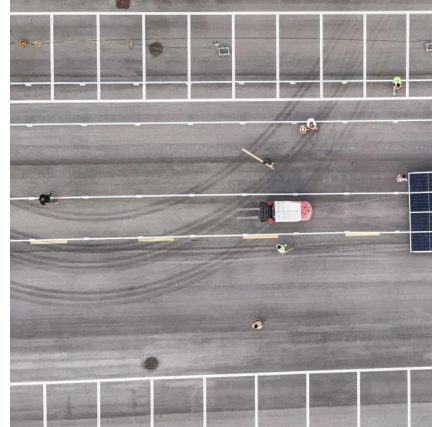
Communication base station large solar energy construction ...

A mobile communication base station and cooling system technology, which is applied in the field of high-efficiency cooling system for



outdoor mobile communication base station equipment, ...

[WhatsApp](#)



What is a base station energy storage power station , NenPower

A base station energy storage power station refers to a facility designed to store energy generated from various renewable sources and supply it efficiently to power base ...

[WhatsApp](#)



portable communication base station ,Tronyan Communication Base Station

What is the typical power consumption of a Tronyan communication base station? Hi Michael, the power consumption of our base stations varies by model, but typically ranges from 500 to 1500 ...

[WhatsApp](#)



Harnessing the Sun: Nauru's Transition to Sustainable Solar Energy

This article examines Nauru's shift to sustainable solar energy, addressing its historical reliance on fossil fuels and the associated economic and environmental challenges.

[WhatsApp](#)





Communication Base Station Solar Power Generation Company

The new energy communication base station supply system is mainly used for those small base station situated at remote area without grid. The main loads of those small base station are ...

[WhatsApp](#)



[REPUBLIC OF NAURU GOVERNMENT GAZETTE ...](#)

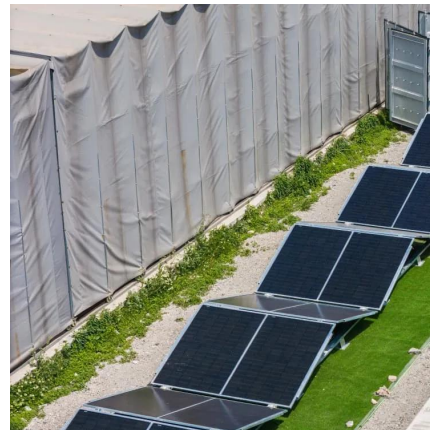
'maritime mobile service' means maritime mobile radiocommunication service, that is a mobile service between coast stations and ship stations, between ship stations or between associated ...

[WhatsApp](#)

[Outdoor Solar System for Bts Telecom Base Station](#)

EverExceed brings you Industry leading solution for powering Telecom Base Stations with or without solar power. EverExceed ESB and EDB series BTS solution can manage multiple ...

[WhatsApp](#)



Harnessing the Sun: Nauru's Transition to Sustainable Solar Energy

This article examines Nauru's shift to sustainable solar energy, addressing its historical reliance on fossil fuels and the associated economic and environmental challenges. ...

[WhatsApp](#)



Solar Power Plants for Communication Base Stations: The Future ...

Meta description: Discover how solar power plants are revolutionizing communication base stations with 40% cost savings and 24/7 reliability. Explore real-world case studies, technical ...

[WhatsApp](#)



[China-Nauru cooperation in solar energy, port upgrading](#)

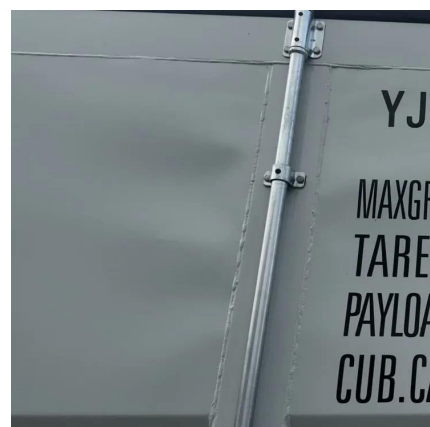
The project will reduce Nauru's dependence on diesel, bringing down the costs in electricity generation, improving local power supply and increase the share of renewable energy ...

[WhatsApp](#)

Solar Power Development Project: Project Administration ...

The project will finance a 6MW grid connected solar power plant (measured as AC output) and 2.5MWh/5MW battery energy storage system (BESS) for solar smoothing energy storage ...

[WhatsApp](#)





Contact Us

For catalog requests, pricing, or partnerships, please visit:
<https://www.straighta.co.za>