

# Mobile power box installation





## Overview

---

How do I install a power pole & meter box for mobile home?

The installation process of a power pole and meter box for mobile home typically involves a few key steps. First, the site must be prepared and the proper permits obtained. Next, the power pole is installed in the ground, ensuring it is securely anchored and meets national electric code standards.

How do I install a mobile home electrical system?

Install the utility pole (must be sourced locally) and mount the electrical equipment including meter base and disconnect panel. Connect the service entrance wiring, install grounding system, and complete utility company connection. Final electrical inspection required. Everything you need to properly install a mobile home electrical system.

How do I install a mobile home power pole?

Follow these essential steps for proper mobile home power pole installation. Obtain electrical permits from local authorities and coordinate with your utility company. Site planning and utility location are critical first steps.

How does a mobile home electrical system work?

A power pole and meter box are crucial components of a mobile home's electrical system. The installation process involves setting up the power pole, connecting the meter box, and running the required wiring. It is important to make sure that the panel and wiring are properly attached to meet the requirements of the national electric code.

Why do mobile homes need a power pole and meter box?

When it comes to powering your mobile home, a power pole and meter box are essential components that allow you access to the national power grid. These components are designed to help provide reliable and consistent power to your home, making it possible for you to enjoy all the comforts of modern



living without having to worry about power outages.

What is a meter box in a mobile home?

The meter box is another essential component of a mobile home's electrical system. It is usually mounted near the power pole and is responsible for measuring the amount of electricity that is consumed. The meter box contains a meter that is connected to the national power grid and provides an accurate reading of the electricity consumption.



## Mobile power box installation

---



### [Operating Instructions PORTABLE POWER DISTRIBUTION ...](#)

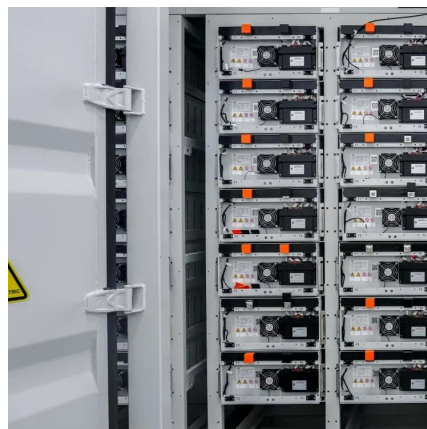
PORTABLE POWER DISTRIBUTION UNIT (PDU)  
Please read and follow the instructions carefully before trying to use this unit (PDU). Please retain this instruction sheet for future ...

[WhatsApp](#)

### Mobile Home Meter Base electrical service DIY Step By Step

How to install a power pole with panel for a mobile home trailer Step by Step from the idea to county to the power company Dominion Electric blue book, underground service, overhead service,

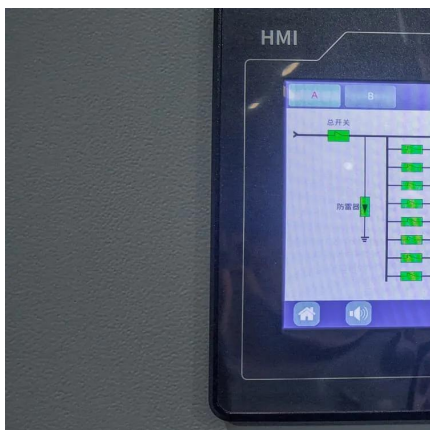
[WhatsApp](#)



### [Power Pole and Meter Box for Mobile Homes \[Energy Supply\]](#)

A power pole and meter box are crucial components of a mobile home's electrical system. The installation process involves setting up the power pole, connecting the meter box, ...

[WhatsApp](#)



### I Tested: My Experience with Mobile Home Electrical Boxes - A

In this article, we will delve into everything you need to know about mobile home electrical boxes - from their purpose and types to



installation and maintenance.

[WhatsApp](#)



### **Mobile Home Meter Base electrical service DIY Step By Step**

How to install a power pole with panel for a mobile home trailer Step by Step from the idea to county to the power company Dominion Electric blue book, underground service,overhead ...

[WhatsApp](#)



### **User Manual: Jackery Manual Transfer Switch for Whole-Home ...**

Imagine seamlessly switching to backup power when the electricity grid fails or there is a brief outage. With the Jackery Explorer 3000 Pro and Explorer 2000 Plus combined ...

[WhatsApp](#)



[H:Projects0707049const2014 work07049-AEP](#)

Mobile Home - Singlewide Overhead Service Installation 7. The entrance cable or pipe mast must be strapped within 12 inches of the top of the meter base and within 12 inches of the top of the ...

[WhatsApp](#)





## Contact Us

---

For catalog requests, pricing, or partnerships, please visit:  
<https://www.straighta.co.za>