

Mobile company base station battery





Overview

Which battery is best for telecom base station backup power?

Among various battery technologies, Lithium Iron Phosphate (LiFePO₄) batteries stand out as the ideal choice for telecom base station backup power due to their high safety, long lifespan, and excellent thermal stability.

What is a mobile phone base station?

A mobile phone base station is a telecommunications infrastructure used to send and receive RF signals from mobile phones. The frequencies used typically range from 900 MHz to 2.45 GHz, with powers varying from 1 W for indoor antennas to 40 W for those at high elevations.

What makes a telecom battery pack compatible with a base station?

Compatibility and Installation Voltage Compatibility: 48V is the standard voltage for telecom base stations, so the battery pack's output voltage must align with base station equipment requirements. Modular Design: A modular structure simplifies installation, maintenance, and scalability.

How do you protect a telecom base station?

Backup power systems in telecom base stations often operate for extended periods, making thermal management critical. Key suggestions include: Cooling System: Install fans or heat sinks inside the battery pack to ensure efficient heat dissipation.

What makes a good battery management system?

A well-designed BMS should include: Voltage Monitoring: Real-time monitoring of each cell's voltage to prevent overcharging or over-discharging. Temperature Management: Built-in temperature sensors to monitor the battery pack's temperature, preventing overheating or operation in extreme cold.



Mobile company base station battery



Building a cloud-based energy storage system through digital

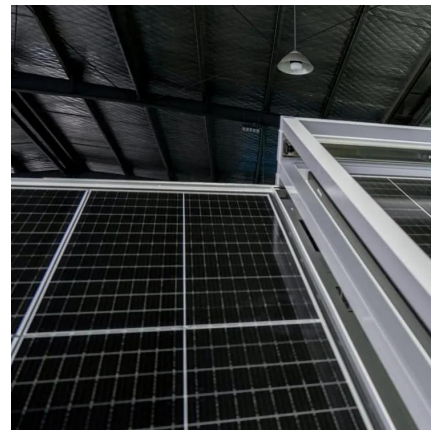
Battery energy storage systems (ESS) have been widely used in mobile base stations (BS) as the main backup power source. Due to the large number of base stations, ...

[WhatsApp](#)

Lithium ion battery for telecom industry/towers/backup systems

Discover comprehensive analysis on the Battery for Base Stations of Mobile Operators Market, expected to grow from USD 1.2 billion in 2024 to by 2033 at a CAGR of 9.2%. Uncover critical ...

[WhatsApp](#)



Lithium ion battery for telecom industry/towers/backup systems

The basic function of a telecom tower battery is to provide uninterrupted power to the base stations to keep the availability of services intact during a power outage.

[WhatsApp](#)



Battery for Base Stations of Mobile Operators Market Size, ...

Discover comprehensive analysis on the Battery for Base Stations of Mobile Operators Market, expected to grow from USD 1.2 billion in 2024 to



by 2033 at a CAGR of 9.2%. Uncover critical ...

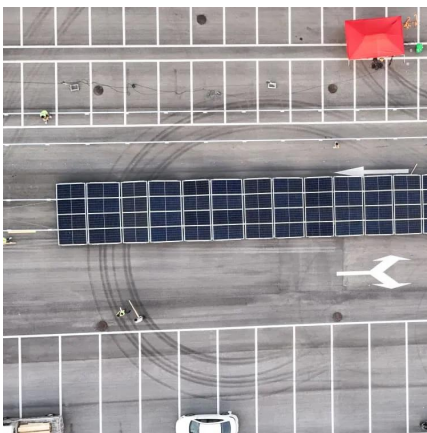
[WhatsApp](#)



[CTECHI 5G Telecom Base Station Battery 48V 50Ah Power](#)

Key Features: Reliable Backup Power: Provides dependable power supply during outages, ensuring uninterrupted operation of 5G base stations and UPS systems. Long Lifespan: ...

[WhatsApp](#)



What are base station energy storage batteries used for?

Innovations in battery technologies, such as lithium-sulfur or solid-state batteries, promise higher energy densities and improved lifespan, thereby enhancing the operational ...

[WhatsApp](#)



Telecom Base Station Battery Solutions: What You Need To Know

What Are Telecom Base Station Batteries? Telecom base station batteries are a type of backup power system for telecom cellsites. They provide continuous power to the site, ...

[WhatsApp](#)





Communication Base Station Battery Market Research Report 2035

By leveraging smart technology, companies can enhance predictive maintenance, thereby reducing downtime and operational costs for base stations. o Expand partnerships with ...

[WhatsApp](#)



Security Camera Systems, Video Doorbells, & Floodlights , Arlo

Protect what matters most with Arlo's award-winning smart home security solutions. Shop security cameras, video doorbells, floodlight cameras and security systems.

[WhatsApp](#)

Telecom Base Station Backup Power Solution: Design Guide for ...

Among various battery technologies, Lithium Iron Phosphate (LiFePO4) batteries stand out as the ideal choice for telecom base station backup power due to their high safety, ...

[WhatsApp](#)



Contact Us

For catalog requests, pricing, or partnerships, please visit:
<https://www.straightta.co.za>