

Mobile base station supporting power supply equipment





Overview

What are the components of a base station?

Power Supply: The power source provides the electrical energy to base station elements. It often features auxiliary power supply mechanisms that guarantee operation in case of lost or interrupted electricity, during blackouts. **Baseband Processor:** The baseband processor is responsible for the processing of the digital signals.

What is a mobile phone base station?

A mobile phone base station is a telecommunications infrastructure used to send and receive RF signals from mobile phones. The frequencies used typically range from 900 MHz to 2.45 GHz, with powers varying from 1 W for indoor antennas to 40 W for those at high elevations.

What is a base station?

What is Base Station?

A base station represents an access point for a wireless device to communicate within its coverage area. It usually connects the device to other networks or devices through a dedicated high bandwidth wire of fiber optic connection. Base stations typically have a transceiver, capable of sending and receiving wireless signals;.

Why do we need a base station?

Technological advancements: The New technologies result in evolved base stations that support upgrades and enhancements such as 4G, 5G and beyond, its providing faster speeds with better bandwidth. **Emergency services:** They provide access to emergency services, so that in case of emergency, people can call through their mobile phones.

Why are base stations important in cellular communication?



Base stations are important in the cellular communication as it facilitate seamless communication between mobile devices and the network communication. The demand for efficient data transmission are increased as we are advancing towards new technologies such as 5G and other data intensive applications.

What are the properties of a base station?

Here are some essential properties: Capacity: Capacity of a base station is its capability to handle a given number of simultaneous connections or users. Coverage Area: The coverage area is a base station is that geographical area within which mobile devices can maintain a stable connection with the base station.



Mobile base station supporting power supply equipment



Selecting the Right Supplies for Powering 5G Base Stations

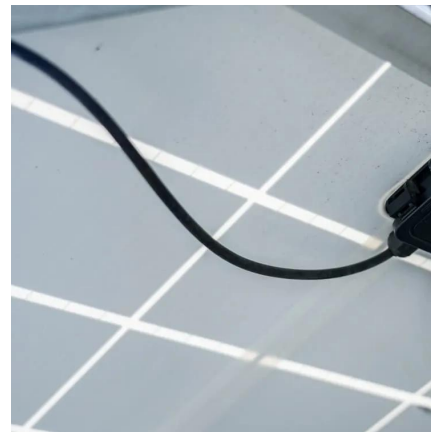
These tools simplify the task of selecting the right power management solutions for these devices and, thereby, provide an optimal power solution for 5G base stations components.

[WhatsApp](#)

Selecting the Right Supplies for Powering 5G Base Stations

A single RoHS compliant BGA package integrates a switching controller, power switches, an inductor, and all the supporting components. In some cases, to maximize power supply ...

[WhatsApp](#)



Power Supply Solutions for Wireless Base Stations Applications

The telecommunications infrastructure and equipment is becoming increasingly more sophisticated, as wireless technology evolves, so does the need for increasingly more reliable ...

[WhatsApp](#)

[Mobile base station power supply solution](#)

With the large-scale development of mobile communication construction, the importance of mobile communication power is also increasingly significant. Wireless base station equipment has



its ...

[WhatsApp](#)



Quick guide: components for 5G base stations and antennas

A look at 5G base-station architecture includes various equipment, such as a 5G base station power amplifier, which converts signals from RF antennas to BUU cabinets ...

[WhatsApp](#)



Selecting the Right Supplies for Powering 5G Base Stations

These tools simplify the task of selecting the right power management solutions for these devices and, thereby, provide an optimal power solution for 5G base stations components.

[WhatsApp](#)



Telecom Battery Backup Systems, Backup Power For Telecom ...

The supporting equipment of the tower system includes mains, distribution box, switching power supply, battery, air conditioning, FSU, etc., which provide the necessary support for the normal ...

[WhatsApp](#)





Research on Design of Switching Power Supply Based on ...

These special working conditions for mobile base stations for communications power equipment put forward higher requirements, mainly in the following areas: The use of rural power

[WhatsApp](#)



Resilient and sustainable microgeneration power supply for 5G mobile

A mechanism is proposed to exploit microgeneration and mobile networks to improve the resilience by managing the renewable energy supplies, energy storage systems, ...

[WhatsApp](#)

Design of mobile base station communication power supply system

Combining the practice and lessons learned from providing power for mobile base stations, a solution for the reliability, maintainability and availability of the mobile base station ...

[WhatsApp](#)



Power Supply Solutions for Wireless Base Stations Applications

MORNSUN has designed entire collections of power supplies and related electrical components, which are all known in the industry for their high reliability and quality. In particular, MORNSUN ...

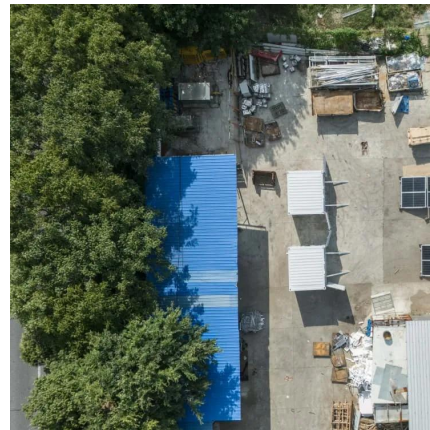
[WhatsApp](#)



Mobile base station site as a virtual power plant for grid stability

The system consists of a live mobile base station site with a mobile connection to the site, local controller, an existing battery, and a power system that, in combination, can ...

[WhatsApp](#)



Contact Us

For catalog requests, pricing, or partnerships, please visit:
<https://www.straighta.co.za>