

# Mobile base station site delisting time





## Overview

---

In practice, cell sites are grouped in areas of high population density, with the most potential users. Cell phone traffic through a single site is limited by the base station's capacity; of -56 dBm signal there is a finite number of calls or data traffic that a base station can handle at once.

A cell site, cell phone tower, cell base tower, or cellular base station is a -enabled site where and electronic communications equipment are.

A is a network of handheld (cell phones) in which each phone communicates with the by through a local antenna at a cellular base station (cell site). The coverage area in which service is provided is.

Cell site workers are called or transmission tower workers. Transmission tower workers often work at heights of up to 460 m (1,500 ft), performing.

An off-grid cell site is not connected to the public . Usually the system is because of difficult access or lack of infrastructure. or other systems.

RangeThe working range of a cell site (the range which mobile devices connects reliably to the cell site) is not a.

Although cell antennas are normally attached to permanent structures, carriers also maintain fleets of vehicles, called (COWs).

According to documents leaked to Der Spiegel, the NSA sells a \$40,000 "active GSM base station" to be used as a tool to mimic a mobile phone tower and thus monitor cell phones.

What is a cellular base station?

A cell site, cell phone tower, cell base tower, or cellular base station is a cellular -enabled mobile device site where antennas and electronic communications equipment are placed (typically on a radio mast, tower, or other raised structure) to create a cell, or adjacent cells, in a cellular network.

What is a base station in a mobile network?



The base stations represent the radio part of the mobile network, and one base station typically contains multiple cells which operate on specific radio frequencies. The radio network is what connects a mobile phone to the mobile network.

How far can a mobile base station be from a base station?

In addition, some technologies, such as GSM, have an additional absolute maximum range of 35 km (22 mi), which is imposed by technical limitations. CDMA and IDEN have no such limit defined by timing. 5G (FR2) Mobile base station: the distances between the 5G base-station is about 250–300 m, due to the use of millimetre waves.

Who owns cell sites & base stations?

The cell sites and base stations are owned by mobile network operators such as Vodafone, T-Mobile, Rogers, AT&T, Verizon etc. The base stations represent the radio part of the mobile network, and one base station typically contains multiple cells which operate on specific radio frequencies.

What is a base station called?

In 2G GSM networks, the base station is called Base Transceiver Station. The base station is called Node B in UMTS networks, eNodeB in LTE networks, and gNodeB in 5G networks. The cell sites and base stations are owned by mobile network operators such as Vodafone, T-Mobile, Rogers, AT&T, Verizon etc.

What is a GSM base station?

In the second generation of mobile networks powered by GSM technology, the base stations are called Base Transceiver Stations or BTS for short. The word transceiver refers to the fact that the base station is doing a dual job of being a transmitter and a receiver, hence the term trans + ceiver.



## Mobile base station site delisting time

---



### [User Guide: 2022 UHF Mobile Base Station](#)

The base station box is waterproof when closed. If rain is in the forecast at your job site, it is recommended to keep your base station in your vehicle with the lid open. While the base can ...

[WhatsApp](#)

### Mobile base station site as a virtual power plant for grid stability

tory standards for base stations vary according to their categories. Importance classification determines how well the power supply of a base station must be secured and which devices ...

[WhatsApp](#)



### Mobile base station site as a virtual power plant for grid stability

Our main finding indicates that the rectifier reaction time within an installed base station site infrastructure ranges from 5 to 8 s, and the time when the base station is entirely ...

[WhatsApp](#)



### Optimal location of base stations for cellular mobile network

We developed a mixed integer programming model to provide the optimal location of base stations at different time periods with the





network's minimum total cost (i.e., installation ...

[WhatsApp](#)



### [Cell sites and cell towers in a mobile cellular network](#)

The radio base station is installed at a mobile operator's site, also known as a "cell site". The electricity powers it, and this power determines how far the radio signal can travel. ...

[WhatsApp](#)



### [GMRS Base Stations for Reliable Communication](#)

A GMRS (General Mobile Radio Service) base station is an essential component for individuals and organizations seeking reliable communication across a wide area. Operating under the ...

[WhatsApp](#)



### [Cell Site Construction Process , How Mobile Works](#)

DAS technologies. A distributed antenna system (DAS) is a network made up of a base station connected to a group of antennas installed in indoor or outdoor locations to improve wireless ...

[WhatsApp](#)





### [Rules on new mobile phone base stations](#)

The Radio Frequency National Site Archive allows you to get email updates when a telco adds new information for a base station site. To subscribe to this service, go to the Radio Frequency ...

[WhatsApp](#)



### **Placement Optimization of UAV-Mounted Mobile Base Stations**

In terrestrial communication networks without fixed infrastructure, unmanned aerial vehicle-mounted mobile base stations (MBSs) provide an efficient solution to achieve wireless ...

[WhatsApp](#)

### **Engineering:Cell site**

Cell phone traffic through a single site is limited by the base station's capacity; there is a finite number of calls or data traffic that a base station can handle at once. This capacity limitation is ...

[WhatsApp](#)



### [Cell sites and cell towers in a mobile cellular network](#)

We developed a mixed integer programming model to provide the optimal location of base stations at different time periods with the network's minimum total cost (i.e., installation ...

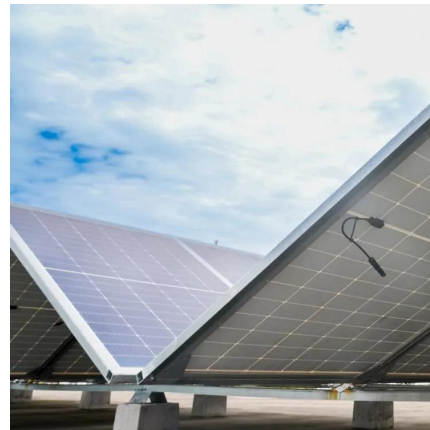
[WhatsApp](#)



### **inside TS 23.273: 5GC-MT-LR involving Mobile Base Station Relay**

[Conditional] The MBSR IAB-DU report its updated TRP location, e.g. TRP's geo-coordinate, velocity and the time for obtaining them, to the Donor-CU, which is further forwarded to LMF.

[WhatsApp](#)



## **Contact Us**

---

For catalog requests, pricing, or partnerships, please visit:  
<https://www.straighta.co.za>