

# **Mobile base station power supply equipment**





## Overview

---

What are the components of a base station CB system?

Remember, the longer the CB antenna, the more potential range that you will have. The basic components for a Base Station CB System include a CB radio, power supply (if you are using a mobile CB radio instead of a base station CB radio), coax, and an antenna.

What is a base station & how does it work?

A base station is generally a radio system that is set up in a fixed location such as house or building. Since a fixed location allows one to install a much taller antenna than an antenna on a vehicle, you can get significantly more potential range. Remember, the longer the CB antenna, the more potential range that you will have.

How do I connect my mobile CB radio to my power supply?

The power supply is plugged into your wall outlet and your mobile CB radio will be connected to the power supply. This is generally cheaper than selecting the Galaxy DX2547 even though you would be purchasing two products (mobile CB radio and power supply) instead of one product, the DX2547. We have selected the DX959 and PS12 for this kit.

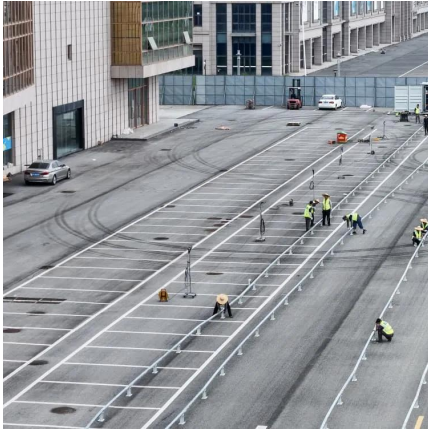
What size base station antenna do I Need?

Here are some of our base station antenna recommendations: PROTON99 - 18 Foot Antenna PATRIOT - 12 Foot Antenna SATURN - 39 Inch Antenna If you are looking for an indoor base station antenna, check out the IBA5. Please note that this will not perform as well as an outdoor base station antenna. Always remember to tune your CB antenna!



## Mobile base station power supply equipment

---



### K-621 Base Station Kit for DX Size CB and 10 Meter Radios

The K-621 makes it super easy to convert your DX sized CB or 10 meter radio into a cool, quiet base station that's lightweight and convenient. Its all-in-one design provides a custom radio ...

[WhatsApp](#)

### Land Mobile Radio DC Power Supplies in 12 and 24VDC Output ...

Combine your radio with a reliable Comms Series Power Supply and custom-fitted cover to create an attractive space-saving base station. Use THIS reference tool to find your radio, then order ...

[WhatsApp](#)



### Research on Design of Switching Power Supply Based on ...

Mobile base station number, unattended, therefore require communication power supply easy maintenance, simple operation, with remote monitoring and strong fault diagnosis function, in ...

[WhatsApp](#)

### [Do I ground a mobile unit when used as a base station.](#)

I Would like to be able to use it in the truck but also as a base unit. From the reading i have done, my understanding is that all my equipment





in the shack needs to be connected to a single ...

[WhatsApp](#)



### **Design of mobile base station communication power supply system**

1 Special conditions of mobile base stations and requirements for communication power supply equipment With the rapid development of mobile communications, the number of mobile base ...

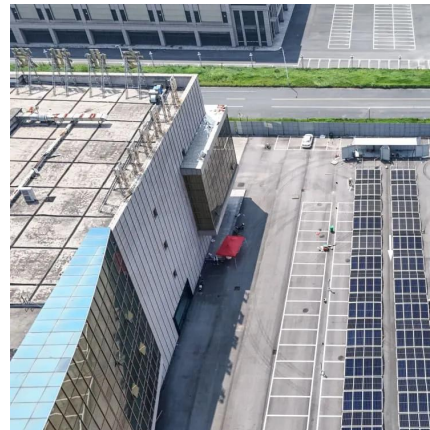
[WhatsApp](#)



### **Mobile as base station--How do I power this thing? : r/gmrs**

For peak performance, best practice is to use a 13.8V regulated power supply. They're more money but most so called '12v' automotive accessories are actually designed to ...

[WhatsApp](#)



### **Desktop Power Supply and Cabinet for Rugged Mobile Radios**

Power your mobile radio from any standard wall outlet or 12V supply with this high-efficiency AC/DC compatible desktop base station cabinet. Ideal for home offices, garages, base camp, ...

[WhatsApp](#)





### [Mobile base station power supply solution](#)

With the large-scale development of mobile communication construction, the importance of mobile communication power is also increasingly significant. Wireless base station equipment has its ...

[WhatsApp](#)



### **CB Radio Base Station Equipment Recommendations and Advice**

The basic components for a Base Station CB System include a CB radio, power supply (if you are using a mobile CB radio instead of a base station CB radio), coax, and an antenna. The article ...

[WhatsApp](#)

### **Mobile as base station--How do I power this thing? : r/gmrs**

For peak performance, best practice is to use a 13.8V regulated power supply. They're more money but most so called '12v' automotive accessories are actually designed to be used when ...

[WhatsApp](#)



### **Optimum sizing and configuration of electrical system for**

With increasing market competition and declining revenues in mobile services, network operators are compelled to optimize the electrical system of telecommunication base ...

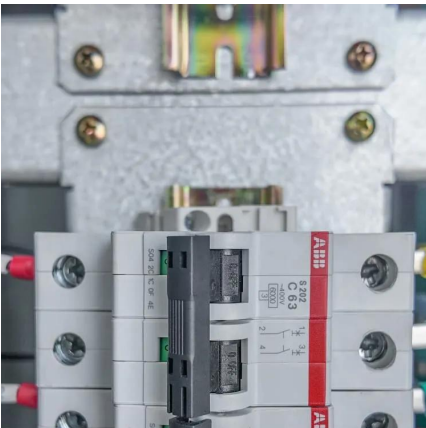
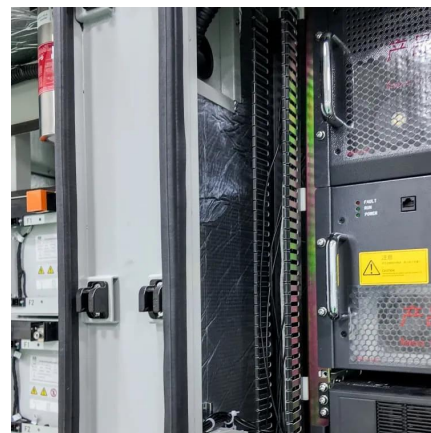
[WhatsApp](#)



### [What is a Base Station in Telecommunications?](#)

What is a Base Station? A base station is a critical component in a telecommunications network. A fixed transceiver that acts as the central communication hub for one or more wireless mobile ...

[WhatsApp](#)



### **How To Power Your Ham Radio Station, Power Supplies, Batteries, Mobile**

An important first step in ham radio is figuring out how you want to power your radio station. Regardless if it being at home or in the field, you need a go

[WhatsApp](#)

## **Contact Us**

---

For catalog requests, pricing, or partnerships, please visit:  
<https://www.straighta.co.za>