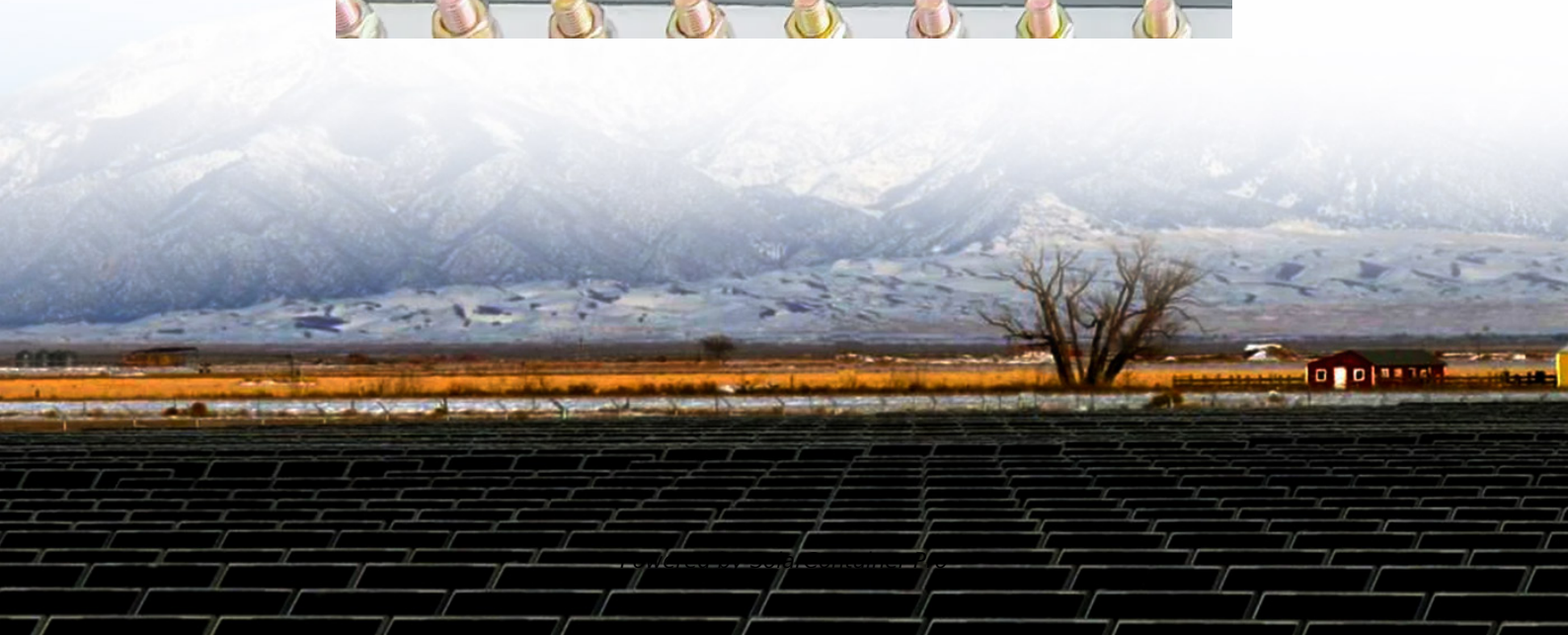


Minimum 12 volt inverter





Minimum 12 volt inverter



Inverter Battery Voltage: How Many Volts Are Needed For ...

An inverter battery typically operates at 12V, 24V, or 48V. These voltages represent the nominal direct current (DC) needed for the inverter's function. Selecting the ...

[WhatsApp](#)

[Frequently Asked Questions about Inverters](#)

Can I cook with electric appliances using an inverter? Cooking is definitely possible with an inverter as long as the battery set is reasonably large and the inverter has a capacity of at ...

[WhatsApp](#)



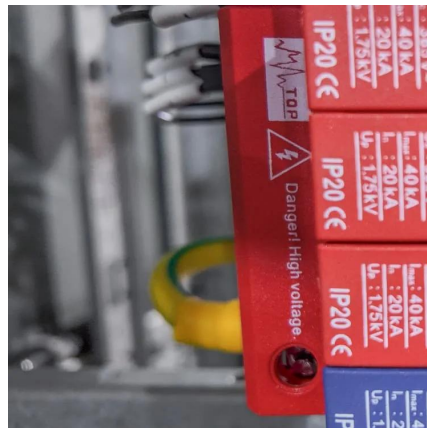
[1000 Watt Power Inverter 12 Volt DC To 110 Volt AC](#)

The (PI-1000) Royal Power 1000 watt power inverter takes direct current from a 12 volt battery and inverts the current into alternating 120 volt current. With 1000 watts of power you can ...

[WhatsApp](#)

What is inverter start up voltage , DIY Solar Power Forum

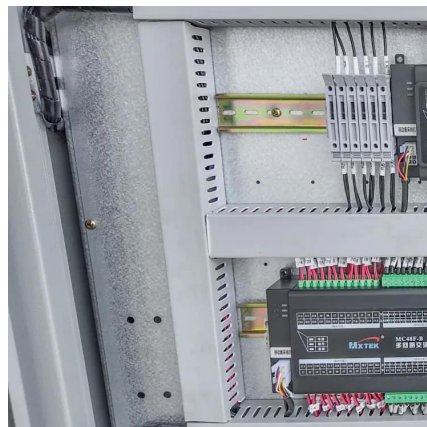
There are 12 volt inverters, 24 volt inverters, and 48 volt inverters. I think the "proper home inverter" that you refer to is a 48 volt one. Pretty



When getting the power set up in your vehicle, one of the most important things to know is how many batteries you'll need for your RV's inverter. I've researched this topic and will tell you all ...



Short Answer: The size you choose depends on the watts (or amps) of what you want to run (find the power consumption by referring to the specification plate on the appliance or tool). We



For catalog requests, pricing, or partnerships, please visit:
<https://www.straighta.co.za>