

# **Maximum modulation ratio of single-phase inverter**





## Maximum modulation ratio of single-phase inverter

---



### Review on novel single-phase grid-connected solar inverters: ...

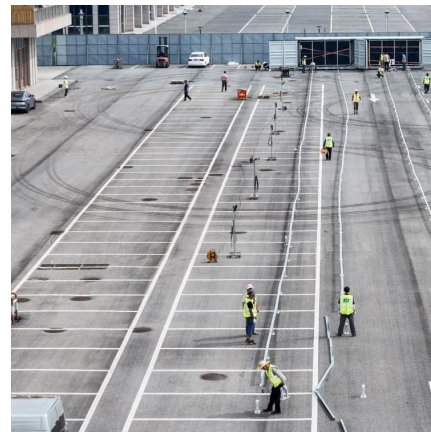
An ever-increasing interest on integrating solar power to utility grid exists due to wide use of renewable energy sources and distributed generation. The grid-connected solar ...

[WhatsApp](#)

### [Experiment: Single-Phase Full-Bridge sinewave Inverter](#)

To overcome the disadvantages of the square-wave PWM, another modulation technique is used for controlling the full-bridge inverter. This method, which called the sinusoidal PWM, will ...

[WhatsApp](#)



### AN-CM-270 Design and Implementation of a Single Phase ...

This application note explores the use of GreenPAK ICs in power electronics applications and will demonstrate the implementation of a single-phase inverter using various control methodologies.

[WhatsApp](#)

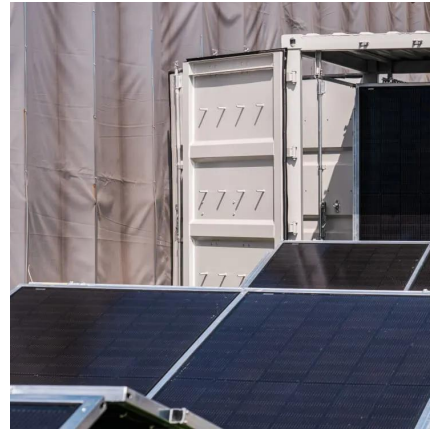
### Selection Method of Modulation Index and Frequency ratio for ...

This paper present the method for selecting the modulation index (ma) and frequency ratio (mf) using Cubic Spline Interpolation to get minimum



harmonic of SPWM ...

[WhatsApp](#)



### Selection Method of Modulation Index and Frequency ratio for ...

Selection Method of Modulation Index and Frequency ratio for Getting the SPWM Minimum Harmonic of Single Phase Inverter March 2021 EMITTER International Journal of ...

[WhatsApp](#)



### "Modulation in Voltage Source Inverters: an Algebraic ...

As a first case study, let us consider a single phase inverter, which in our nomenclature corresponds to two phase inverter, since there are two inverter legs, thus  $n = 2$ .  $2 V_{dc}$  and can ...

[WhatsApp](#)



### [Unipolar PWM Single Phase Inverter with RL Load](#)

Introduction SPWM or sinusoidal pulse width modulation is widely used in power electronics to initialize the power so that a sequence of voltage pulses can be generated by the on and off of ...

[WhatsApp](#)

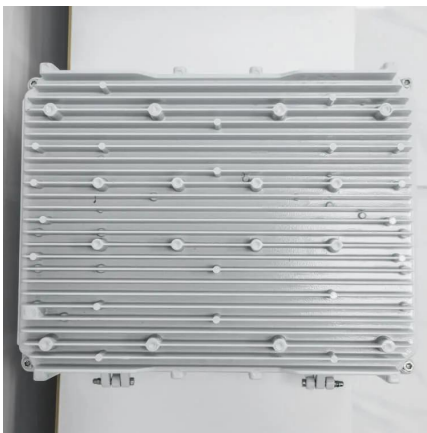




### [Bipolar PWM Single Phase Inverter with RL Load](#)

PWM Inverter uses PWM (Pulse Width Modulation) technique to control the output voltage of the inverter, this is done to fulfill the AC load requirements. In PWM inverter the controlled output ...

[WhatsApp](#)



### **A review on single-phase boost inverter technology for low power ...**

Solar Photovoltaic (SPV) inverters have made significant advancements across multiple domains, including the booming area of research in single-stage boosting inverter ...

[WhatsApp](#)

## **Contact Us**

---

For catalog requests, pricing, or partnerships, please visit:  
<https://www.straighta.co.za>