

Maximum capacity of photovoltaic combiner box





Overview

How do I choose a photovoltaic (PV) combiner box?

When selecting a photovoltaic (PV) combiner box, several key parameters must be considered to ensure the efficient operation and safety stability of the PV power station.

Why should you choose a PV combiner box?

Leading Manufacturer Protects Solar Power Safety. The selection of a PV combiner box is a critical link to ensuring the efficient and safe operation of a PV power station. It involves considering multiple parameters and factors, including input power parameters, input voltage parameters, protection level, temperature range, and reliability.

What is a combiner box in a photovoltaic system?

In a photovoltaic system, a combiner box acts as a central hub that consolidates and manages the direct current (DC) output of multiple solar panels. Its main purpose is to simplify the wiring structure, enhance system security and simplify maintenance procedures.

What is the input power parameter of a PV combiner box?

The input power parameter is one of the key considerations in the selection process. It refers to the maximum input power that the PV combiner box can handle. When selecting, it's necessary to determine the input power parameter of the PV combiner box based on the total installed capacity and expected power generation of the PV power station.

What are the components of a PV combiner box?

PV combiner boxes consist of several key components: Input Terminals: These terminals are where the output cables from the solar panels are connected. They are designed to handle high currents and provide a secure connection. Circuit Breakers: Combiner boxes often include circuit breakers to protect the



system from overcurrent or short circuits.

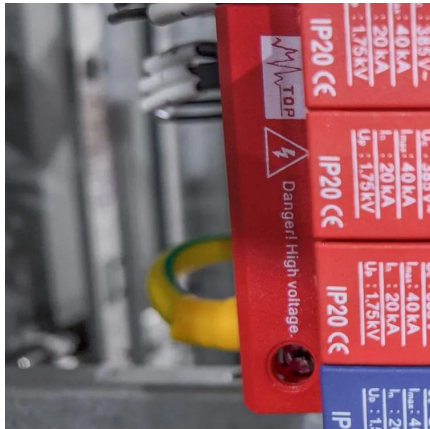
Does a combiner box increase voltage?

No, a combiner box does not increase the voltage. It combines the current of different strings while the voltage output from the panels remains unchanged.

iv) Do you need a combiner box with two solar panels?



Maximum capacity of photovoltaic combiner box



How To Size Solar Combiner Box?

Learn how to size a solar combiner box by considering the number of strings, current, and voltage ratings. Proper sizing ensures optimal performance, safety, and reliability for your PV system.

[WhatsApp](#)

The Ultimate Guide to Solar Combiner Boxes: From Basics to ...

Choose a combiner box with a voltage rating that matches or exceeds the maximum voltage of your solar power system. This is critical for ensuring safe operation and ...

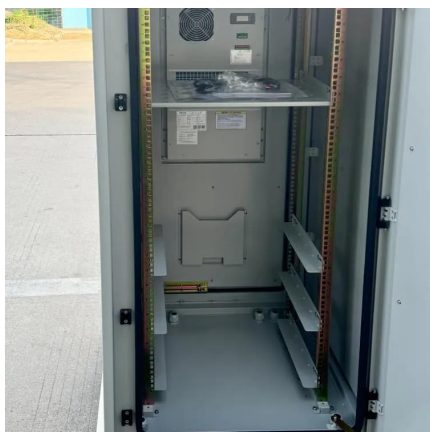
[WhatsApp](#)



[PV Combiner Boxes: Organizing Solar Connections](#)

Capacity: The combiner box should have the capacity to handle the maximum current and voltage of the solar panels. It is important to ensure that the box can safely accommodate the ...

[WhatsApp](#)



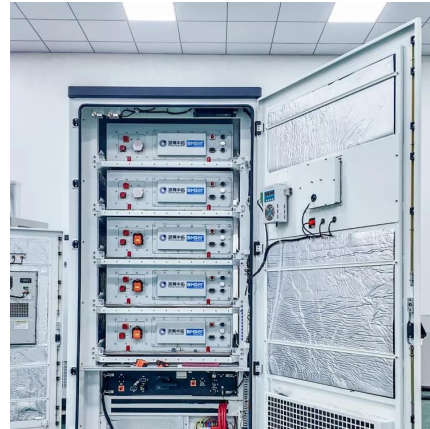
PV Combiner Box Product Selection Guide: Finding the Right Fit?

Choosing a PV combiner box? This guide simplifies selection! Learn about size, essential features, reliability, & certifications for a safe &



efficient solar system.

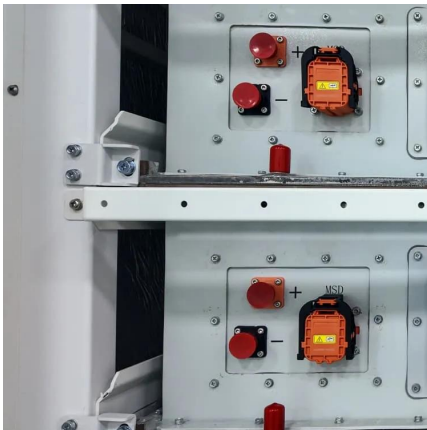
[WhatsApp](#)



A Comprehensive Guide to Combiner Boxes in Photovoltaic ...

This comprehensive guide aims to shed light on the importance, functions, types and best practices of combiner boxes, unlocking the mystery behind their role in harnessing solar energy.

[WhatsApp](#)



[Solar Combiner Boxes: Why We Need Them?](#)

Solar combiner boxes that efficiently combine and protect the individual strings of PV modules, optimizing performance and reducing risks. A Solar Combiner Box is a key component in solar ...

[WhatsApp](#)



[VEVOR Pv Combiner Box Solar Fuse 810087877026](#)

The Vevor PV Combiner Box is designed with a 15A fuse and a maximum current handling capacity of 125A. The 15A fuse provides an additional layer of safety, protecting the system ...

[WhatsApp](#)





Everything You Need to Know About PV Combiner Boxes: A ...

Comprehending the significance of a Photovoltaic combiner box is vital for achieving the highest efficiency of your system. Be it a small domestic installation or a ...

[WhatsApp](#)



[5 String PV Combiner Box, 1000V , Power Home](#)

With a system maximum DC voltage of 1000V and a maximum input current of 15A per string, 5 string PV combiner box for sale. 3-pole plug-push module structure. II grade lightning ...

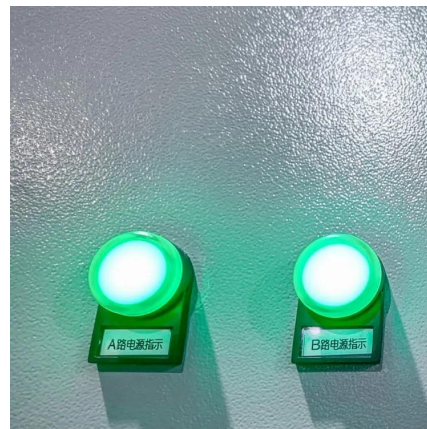
[WhatsApp](#)



How to Select the Right PV Combiner Box: Key Parameters and ...

It refers to the maximum input power that the PV combiner box can handle. When selecting, it's necessary to determine the input power parameter of the PV combiner box ...

[WhatsApp](#)



Photovoltaic power generation combiner box system design

In a photovoltaic system, a combiner box acts as a central hub that consolidates and manages the direct current (DC) output of multiple solar panels. Its main purpose is to simplify the wiring ...

[WhatsApp](#)



Contact Us

For catalog requests, pricing, or partnerships, please visit:
<https://www.straighta.co.za>