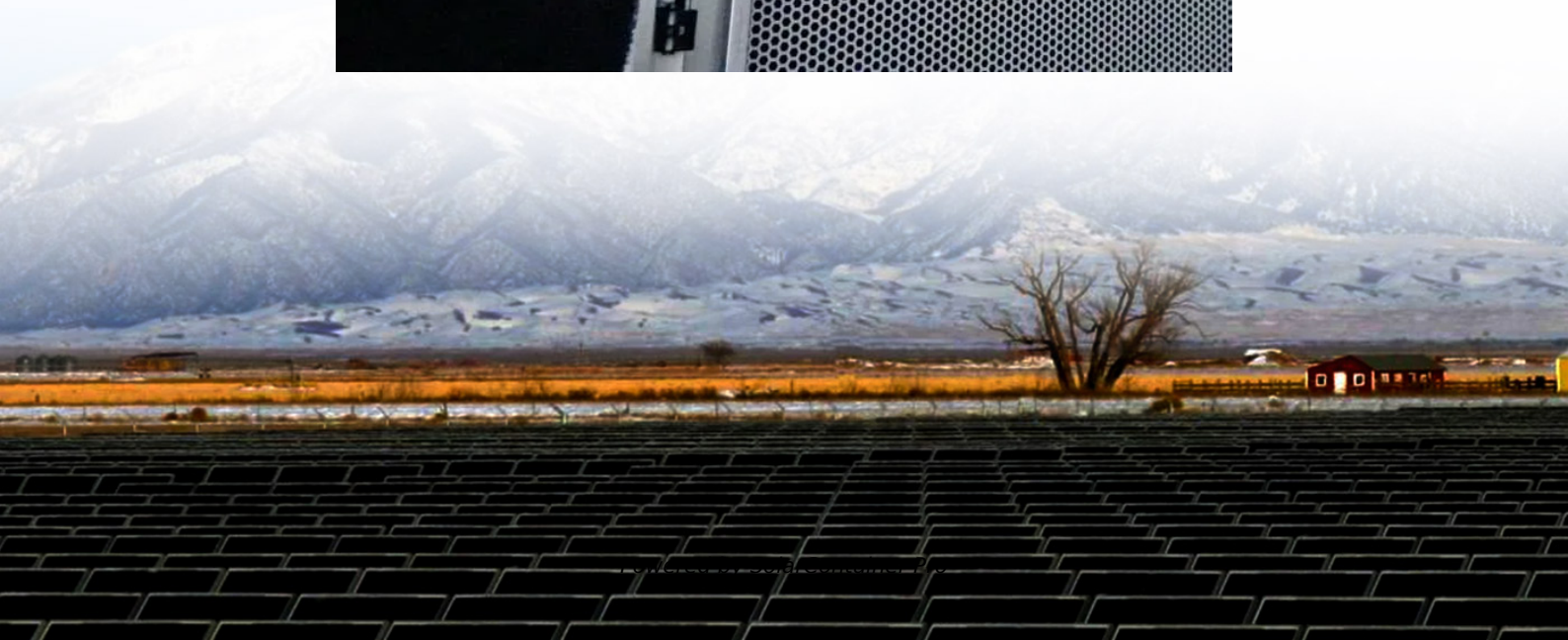


Location of imported battery cabinets base station





Overview

The has over 40 in , two of which are scheduled to close. Over 220 others have already been closed, mostly following the end of the in the 1990s. Many were positioned strategically to serve as forward posts in any war against the . The were initially organized as USEFT (United States Force European Theater, from August 1, 1945 to February 28, 1946, in Berlin and Frankfurt am Main, i.

Where should a battery cabinet be installed?

The battery cabinet must be installed adjacent to the power cabinet. The following diagram shows the equipment layout for a typical new indoor Macrocell site. Notes: The cabinets may be placed with zero clearance to the rear wall. The cabinets may be placed with zero clearance to the side wall, however some clearance is recommended.

What are the requirements for a battery location?

Battery locations shall conform to 480.9 (A), (B), and (C). (A) Ventilation. Provisions appropriate to the battery technology shall be made for sufficient diffusion and ventilation of gases from the battery, if present, to prevent the accumulation of an explosive mixture. (B) Live Parts. Guarding of live parts shall comply with 110.27.

Where should a top terminal battery be installed?

Where top terminal batteries are installed on tiered racks, working space in accordance with the battery manufacturer's instructions shall be provided between the highest point on a cell and the row or ceiling above that point. (E) Egress.

What are the minimum clearance requirements for a base station?

Minimum clearances must be maintained between the cabinets and surrounding building parts/cabinet to accommodate the installation and maintenance of the base station. The following constraints must be considered for cabinet clearances:.

Can a battery stand contact a wall?



Battery stands shall be permitted to contact adjacent walls or structures, provided that the battery shelf has a free air space for not less than 90 percent of its length. (D) Top Terminal Batteries.

What is the minimum clearance for a battery rack?

For battery racks, there shall be a minimum clearance of 25 mm (1 in.) between a cell container and any wall or structure on the side not requiring access for maintenance. Battery stands shall be permitted to contact adjacent walls or structures, provided that the battery shelf has a free air space for not less than 90 percent of its length.



Location of imported battery cabinets base station



[MTS4L TETRA/LTE Base Station Specification Sheet](#)

C-SCCH - additional control channels on the main
The MTS4L can be installed as a TETRA only base carrier, quadrupling existing capacity. station, but it can include the services for the ...

[WhatsApp](#)

Lithium Battery Charging Cabinet: The Essential Guide to Safe ...

Introduction to Lithium Battery Charging Cabinets
The widespread use of lithium-ion batteries across various industries and applications--ranging from power tools to electric ...

[WhatsApp](#)



4 Station Lithium-Ion Battery Cabinet , Charging & Storage

The 4 Station Lithium-ion Battery Charging and Storage cabinet has 4 power sockets for you to plug in 4 lithium-ion battery chargers, that's four batteries per compartment. ...

[WhatsApp](#)



Where Should I Place My Base Station? , SimpliSafe Support Home

The Base Station should be placed in a centrally-located area within your home or business, and in an open space. It is recommended that the



Base Station is elevated at least 3 feet off the ...

[WhatsApp](#)



[Power Station Imports Under Sub Chapter 8504](#)

Information and reports on Power Station Imports Under Sub Chapter 8504 along with detailed shipment data, import price, export price, monthly trends, major exporting countries countries, ...

[WhatsApp](#)

[List of United States Army installations in Germany](#)

The United States Army has over 40 military installations in Germany, two of which are scheduled to close. Over 220 others have already been closed, mostly following the end of the Cold War in the 1990s. Many were positioned strategically to serve as forward posts in any war against the USSR. The United States Armed Forces were initially organized as USEFT (United States Force European Theater, from August 1, 1945 to February 28, 1946, in Berlin and Frankfurt am Main, i...

[WhatsApp](#)



What equipment does the base station energy storage cabinet ...

The equipment utilized in the base station energy storage cabinet comprises multiple essential components, which include: batteries, inverters, energy management ...

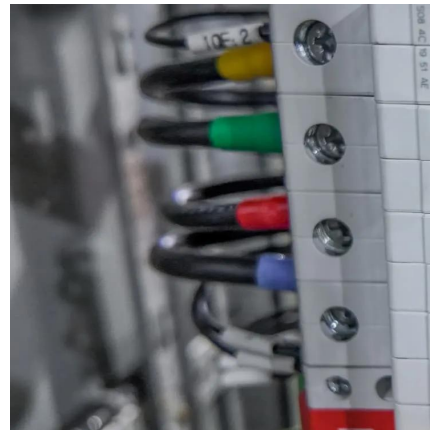


[WhatsApp](#)

Site Battery Storage Cabinet, Base Station Energy Storage

Highjoule's Site Battery Storage Cabinet ensures uninterrupted power for base stations with high-efficiency, compact, and scalable energy storage. Ideal for telecom, off-grid, and emergency ...

[WhatsApp](#)



[USAG Bavaria, Hohenfels , Base Overview & Info](#)

Location United States Army Garrison Bavaria - Hohenfels Training Area is in Germany, approximately 45 miles southwest of USAG Bavaria Grafenwoehr Community, and less than ...

[WhatsApp](#)

[Grafenwoehr \(Vilseck\), United States Army Garrison](#)

United States Army Garrison (USAG) Grafenwoehr consists of Rose Barracks at Vilseck and Main Post at Grafenwoehr, which are located in beautiful Bavaria, about 60 miles northeast of ...

[WhatsApp](#)





Contact Us

For catalog requests, pricing, or partnerships, please visit:
<https://www.straighta.co.za>