

Lithuania outdoor battery cabinet BMS system





Overview

What is a battery management system (BMS)?

BESS employs a sophisticated, multilevel battery management system (BMS) for system monitoring and control. Each battery management system including: At the lower level is the Module BMS (BMU), which is designed to detect voltage, temperature, and execute cell balance functions for cells.

Are the battery cabinets modular?

Whether you're planning an on-grid project or an off-grid solution, the battery cabinets are designed to be modular and easily expandable in the future. We've designed our solutions to guarantee safety and comfortability for you. All our battery solutions are forklift-ready and can be easily installed at the site.

What is a rack BMS (BCU)?

The rack BMS (BCU) can manage all module BMS units and detects total voltage, current, and executes protection functions by switching DC-contactor as well as interact with PCS by RS485 to perform power limits. Finally, local controller manages rack BMS units (BCU) and PCS.



Lithuania outdoor battery cabinet BMS system



100KW/215KWh All-in-One Outdoor Lithium Inverter Battery ...

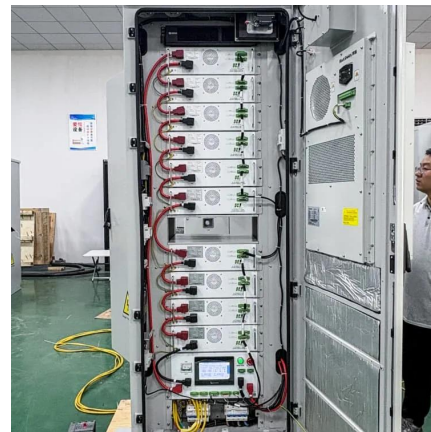
Our solution is an all-in-one package: Battery packs, charge controller, BMS, EMS, and PcS, all integrated into a single unit with a highly efficient three-level topology to optimize system ...

[WhatsApp](#)

Deye ESS Lithium Battery Cabinet System 61.44 kWh Outdoor

The Deye 61.44 kWh ESS Lithium Battery Cabinet System is a high-voltage, outdoor-ready energy storage solution for commercial, industrial, and large residential applications. It ...

[WhatsApp](#)



[100kWh Integrated Outdoor BESS with BMS, EMS & PCS](#)

The system integrates a battery, BMS, EMS, modular PCS, and fire protection into a compact, weatherproof unit, making it highly suitable for industrial and commercial applications. It ...

[WhatsApp](#)



100kW 215kWh All-in-One Battery Storage Cabinet (iCON BESS) ...

Racks are connected in parallel and paired with a system BMS to meet the power and energy requirements of the application at hand. All wire



connections are placed on the front side of the ...

[WhatsApp](#)



[IP55 ESS Outdoor Cabinet Energy Storage System , AZE](#)

This engery storage cabinet boasts an advanced All-in-One integrated technology, seamlessly combining PCs, inverters, Battery Management System (BMS), and Energy Management ...

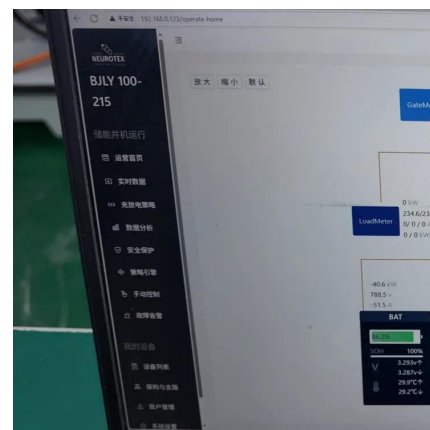
[WhatsApp](#)



[12 companies for Battery Management System in Lithuania](#)

When exploring the Battery Management System (BMS) industry in Lithuania, several key considerations emerge. The regulatory environment is crucial, as compliance with EU ...

[WhatsApp](#)



200kw 430kWh BESS Integrated Air Cooling Solar Battery ...

The output of the energy storage cabinet can be connected to grid, to supply various load equipment and electric vehicle chargers. The output of the battery system is controlled and ...

[WhatsApp](#)

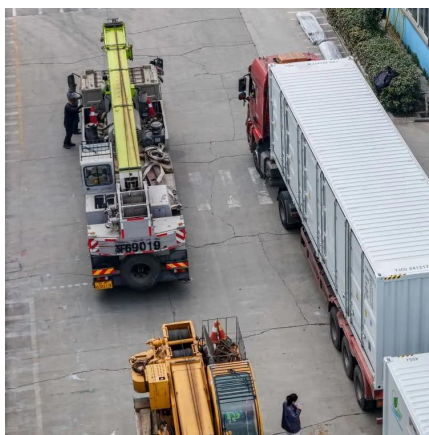




[215 kWh LFP Air Cooled Battery System , HISbatt](#)

Our 3-level battery management system (BMS) guarantees safe operation by continuously monitoring all critical parameters at three distinct levels: the cell level, battery module level, ...

[WhatsApp](#)



Outdoor Battery Cabinet Guide: IP Ratings, Cooling & Selection

2 days ago· The outdoor battery cabinet is far from a secondary detail--it is the foundation of energy storage system resilience. From IP ratings that guard against dust and water, to ...

[WhatsApp](#)

Outdoor Inverter Battery Cabinet - Durable & Weatherproof ...

Discover high-quality outdoor inverter battery cabinets designed for durability, weather resistance, and secure power storage. Ideal for solar systems, UPS, and telecom ...

[WhatsApp](#)



[Lithuania 50kW 100kWh outdoor cabinet ESS project](#)

Project brief: Our 50kW100kWh outdoor cabinet ESS will participate in power dispatching alongside the customer's EV charging stations through the EMS, optimizing charging load and ...

[WhatsApp](#)



ESS Solar Energy Storage Battery Cabinet 215kwh 430kwh ...

It is an one-stop integration system and consist of battery module, PCS, PV controler (MPPT) (optional), control system, fire control system, temperature control system and monitoring system.

[WhatsApp](#)



Contact Us

For catalog requests, pricing, or partnerships, please visit:
<https://www.straighta.co.za>