

Lithium iron phosphate battery station cabinet principle





Overview

What is a lithium iron phosphate battery?

It is a secondary lithium-ion battery widely used in electric vehicles, energy storage systems, and portable electronic devices. Lithium iron phosphate batteries consist of a positive electrode made of lithium iron phosphate, a negative electrode made of graphite, an electrolyte, and a separator.

What is a lithium iron phosphate (LiFePO₄) battery?

Like any other battery, Lithium Iron Phosphate (LiFePO₄) battery is made of power-generating electrochemical cells to power electrical devices. As shown in Figure 1, the LiFePO₄ battery consists of an anode, cathode, separator, electrolyte, and positive and negative current collectors.

How do LiFePO₄ batteries work?

The working principle of lifepo4 batteries is based on the insertion and extraction processes of lithium ions. When charging, the external power supply provides energy, and the lithium ions on the positive electrode are extracted from the lithium iron phosphate crystal and migrate to the negative electrode through the electrolyte and separator.

What is lithium ion battery with LiFePO₄ as cathode?

B. Mao, C. Liub, K. Yang, "Thermal runaway and fire behaviors of a 300 Ah lithium ion battery with LiFePO₄ as cathode", Renewable and Sustainable Energy Reviews, vol. 139, Apr 2021, 110717. Like any other battery, Lithium Iron Phosphate (LiFePO₄) battery is made of power-generating electrochemical cells to power electrical devices.

What are the cathode materials of lithium ion batteries?

The cathode materials of lithium-ion batteries mainly include lithium cobalt, lithium manganese, lithium nickel, ternary material, lithium iron phosphate, and so on. Lithium cobaltate is the anode material used in most lithium-ion



batteries.

Are lithium iron phosphate batteries safe?

Lithium iron phosphate batteries are generally considered to be free of any heavy metals and rare metals (nickel metal hydride batteries need rare metals), non-toxic (SGS certification), pollution-free, in line with European RoHS regulations, for the absolute green battery certificate.



Lithium iron phosphate battery station cabinet principle



Working principle of lithium iron phosphate battery cabinet

The full name of LiFePO₄ Battery is lithium iron phosphate lithium ion battery. Due to its exceptional performance in power applications, it is commonly referred to as a lithium iron ...

[WhatsApp](#)

The full discharge principle of lithium iron phosphate battery

LiFePO₄ battery (Expert guide on lithium iron phosphate) Lithium Iron Phosphate (LiFePO₄) batteries continue to dominate the battery storage arena in 2024 thanks to their high energy ...

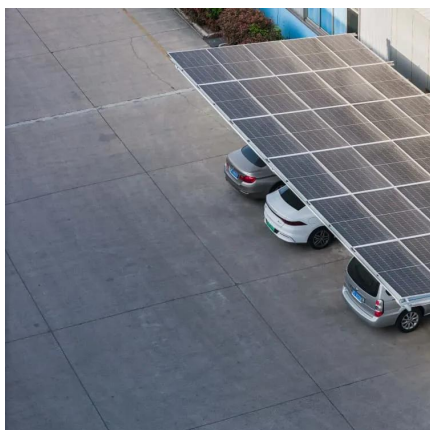
[WhatsApp](#)



Lifepo4 Battery Composition Structure And Working Principle

Lifepo4 battery refers to a lithium-ion battery using lithium iron phosphate as the positive electrode material. It is a secondary lithium-ion battery widely used in electric vehicles, ...

[WhatsApp](#)



[IP55 ESS Outdoor Cabinet Energy Storage System . AZE](#)

Based on a lithium iron phosphate battery system, the ESS outdoor cabinet serves as a comprehensive complete solution for stationary



energy storage. The universal usability, such ...

[WhatsApp](#)



Working principle of lithium iron phosphate (LiFePO₄) battery

Lithium iron phosphate (LiFePO₄) batteries are lithium-ion batteries, and their charging and discharging principles are the same as other lithium-ion batteries. When ...

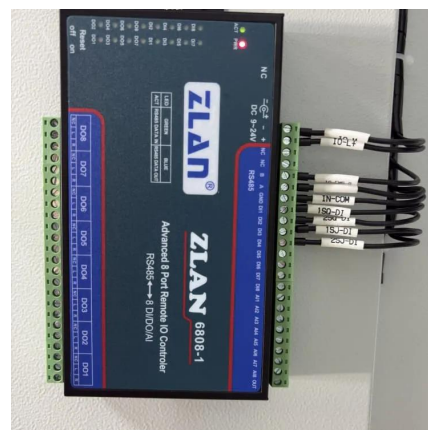
[WhatsApp](#)



Working principle of lithium iron phosphate battery cabinet

1. When the lithium iron phosphate battery is charged, Li⁺ migrates from the 010 plane of the lithium iron phosphate crystal to the crystal surface, enters the electrolyte under the action of ...

[WhatsApp](#)



Lithium Iron Phosphate Battery Working Principle and Chemical ...

Lithium iron phosphate lithium ion batteries, refers to lithium batteries that use lithium iron phosphate as the cathode material. The main cathode materials for lithium ...

[WhatsApp](#)

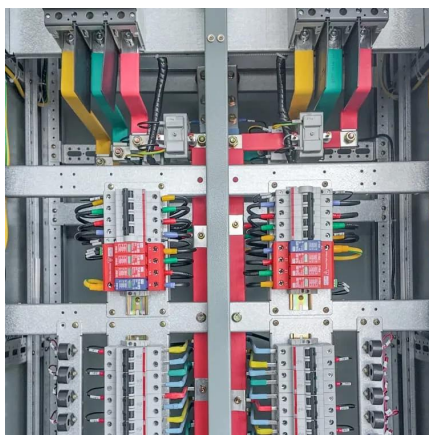




[What Is a LiFePO4 Battery Station and How Does It Work?](#)

A LiFePO4 battery station is a modular battery energy storage system (BESS) that uses lithium iron phosphate cells as the core energy storage units. These stations are ...

[WhatsApp](#)



Lithium iron phosphate battery working principle and significance

LiFePO4, as the positive terminal of the battery, is connected by aluminum foil to the positive terminal of the battery. In the middle is a polymer diaphragm, which separates the positive ...

[WhatsApp](#)

[LiFePO4 Power Station: All You Need to Know - VTOMAN](#)

This article aims to throw light over the details of LiFePO4 batteries, comparing them with traditional lithium-ion counterparts and explore the benefits and best LiFePO4 power ...

[WhatsApp](#)



Contact Us

For catalog requests, pricing, or partnerships, please visit:
<https://www.straighta.co.za>