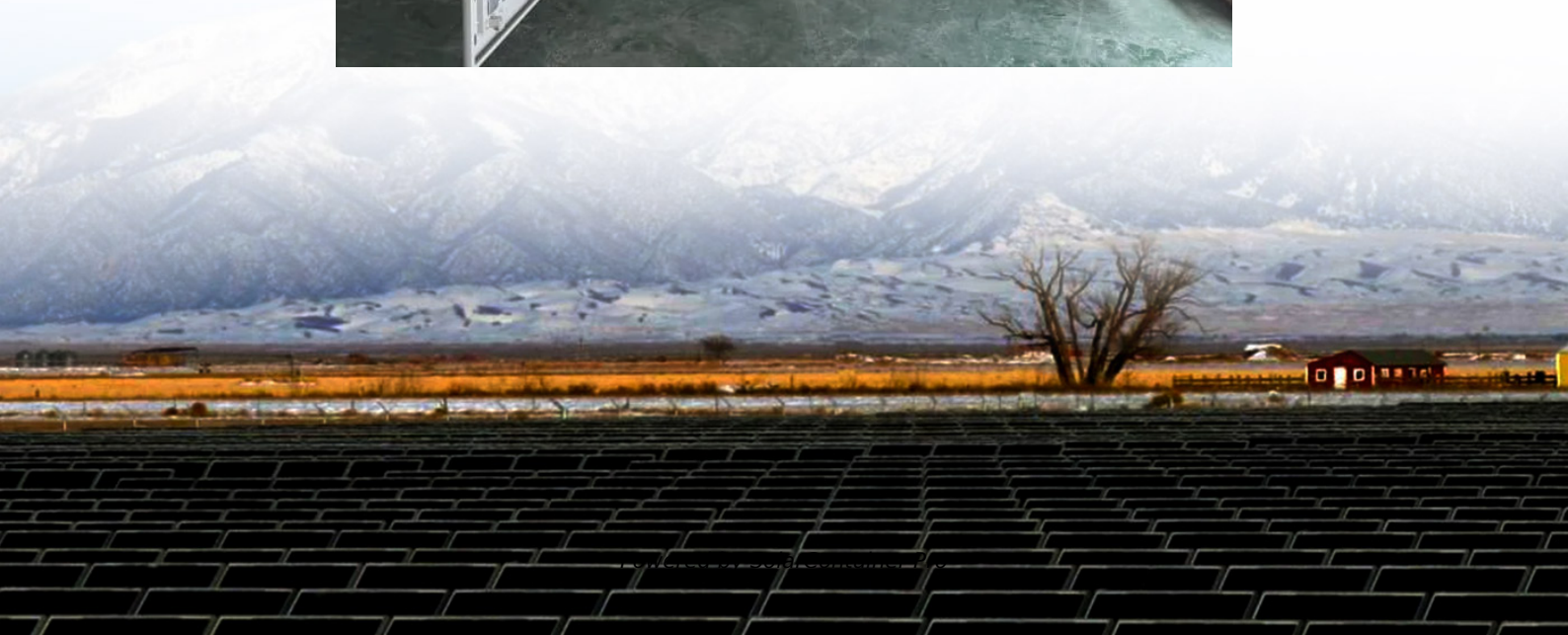


Lithium iron phosphate battery station cabinet is fully charged





Overview

It is generally not recommended to store LiFePO₄ (Lithium Iron Phosphate) batteries fully charged for an extended period, as it can cause damage to the battery and shorten its overall lifespan. When LiF.

Do you need to charge a LiFePO₄ battery before storage?

It is not necessary to charge a LiFePO₄ battery fully before storage, as storing a battery at 100% charge for a long period can damage the battery's health. It is recommended to charge the battery up to 50% capacity before storage. 4.3 How Long Can a LiFePO₄ Battery Last in Storage?

.

What is the charging method of a lithium phosphate battery?

* The charging method of both batteries is a constant current and then a constant voltage (CCCV), but the constant voltage points are different. * The nominal voltage of a lithium iron phosphate battery is 3.2V, and the charging cut-off voltage is 3.6V.

What is a lithium iron phosphate (LiFePO₄) battery?

A Comprehensive Guide Lithium Iron Phosphate (LiFePO₄) batteries have gained popularity in recent years due to their superior performance and safety compared to traditional lithium-ion batteries. They are widely used in electric vehicles, portable electronics, and renewable energy storage systems.

How do you know if a lithium iron phosphate battery is fully charged?

By monitoring the charging voltage and current, you can determine if lithium iron phosphate battery is fully charged. When the battery reaches its maximum voltage and the charging current drops to a very low level (usually below 5% of the battery's capacity), it is an indication that the battery is fully charged.

How many volts is a lithium phosphate battery?



* The nominal voltage of a lithium iron phosphate battery is 3.2V, and the charging cut-off voltage is 3.6V. * The nominal voltage of ordinary lithium batteries is 3.6V, and the charging cut-off voltage is 4.2V. Can I charge LiFePO4 batteries with solar?

Solar panels cannot directly charge lithium-iron phosphate battery.

Why do LiFePO4 batteries need management boards?

Unlike the lead-acid battery, a number of LiFePO4 cells in a battery pack in series connection cannot balance each other during charging process. This is because the charge current stops flowing when the cell is full. This is why the LiFePO4 packs need management boards.



Lithium iron phosphate battery station cabinet is fully charged



Is it true that you should keep the battery charged at no more

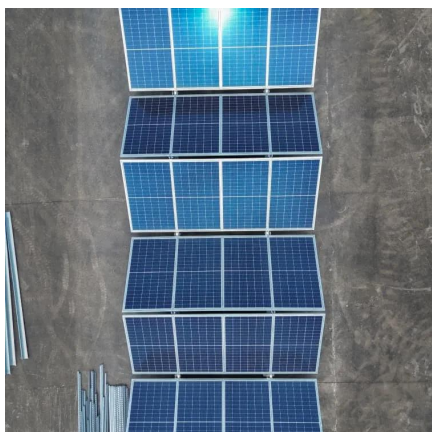
In that situation it makes good sense to charge it up only halfway, maybe a little more. That will be the optimum for battery life (though lithium iron phosphate -- LFP -- makes that *somewhat* ...

[WhatsApp](#)

[How to Charge and Discharge LiFePO4 Battery](#)

When the battery reaches its maximum voltage and the charging current drops to a very low level (usually below 5% of the battery's capacity), it is an indication that the battery ...

[WhatsApp](#)



[Charging Lithium Iron Phosphate \(LiFePO4\) Batteries: A ...](#)

Charging a Lithium Iron Phosphate (LiFePO4) battery quickly and safely involves understanding the battery's chemistry, following optimal charging practices, and utilizing the ...

[WhatsApp](#)

[Storing LiFePO4 Batteries: A Guide to Proper Storage](#)

It is not necessary to charge a LiFePO4 battery fully before storage, as storing a battery at 100% charge for a long period can damage the



battery's health. It is recommended to charge the ...

[WhatsApp](#)



[How To Charge Lithium Iron Phosphate \(LiFePO4\) Batteries](#)

During the conventional lithium ion charging process, a conventional Li-ion Battery containing lithium iron phosphate (LiFePO4) needs two steps to be fully charged: step 1 uses ...

[WhatsApp](#)



How To Charge LiFePO4 Battery Safely? A Comprehensive Guide

Here are the most common methods to charge a LiFePO4 battery. 1. Constant Current Charging. It means keeping the charging current constant throughout the charging ...

[WhatsApp](#)



Optimal Storage Practices for LiFePO4 Batteries: Ensuring ...

When preparing LiFePO4 batteries for storage, achieving the correct state of charge is essential. Research and industry standards consistently recommend storing these ...

[WhatsApp](#)





How to Properly Charge My Lithium Battery? Charging Guide of ...

The most ideal way to charge a LiFePO4 battery is with a lithium iron phosphate battery charger, as it will be programmed with the appropriate voltage limits. Most lead-acid ...

[WhatsApp](#)



How to Charge LiFePO4 Batteries for Maximum Efficiency and ...

LiFePO4 (lithium iron phosphate) batteries require specific charging techniques to maximize efficiency and lifespan. Use a compatible charger with CC/CV (constant ...

[WhatsApp](#)

Can You Store Lithium Iron Phosphate (LiFePO4) Batteries at ...

Storing LiFePO4 batteries at full charge can cause voltage stress that accelerates capacity loss and reduces overall lifespan. Prolonged high voltage exposure leads to faster ...

[WhatsApp](#)



Smart Lithium Iron Phosphate (LFP) Battery Charger - BESS EV ...

What is a Smart Lithium Iron Phosphate (LFP) Battery Charger, and why does it matter? It plays a key role in making Battery Energy Storage Systems (BESS) more efficient. ...

[WhatsApp](#)



[Lithium Iron Phosphate batteries - Pros and Cons](#)

Introduction: Offgrid Tech has been selling Lithium batteries since 2016. LFP (Lithium Ferrophosphate or Lithium Iron Phosphate) is currently our favorite battery for several ...

[WhatsApp](#)



Can You Store Lithium Iron Phosphate (LiFePO4) Batteries at 100% Charge?

Storing LiFePO4 batteries at full charge can cause voltage stress that accelerates capacity loss and reduces overall lifespan. Prolonged high voltage exposure leads to faster ...

[WhatsApp](#)

Contact Us

For catalog requests, pricing, or partnerships, please visit:
<https://www.straightta.co.za>