

# **Lithium battery that can be connected to the inverter**





## Overview

---

Yes, you can connect an inverter to a lithium battery. Lithium batteries, particularly Lithium Iron Phosphate (LiFePO4) batteries, are well-suited for use with inverters due to their high efficiency, lightweight design, and ability to deliver consistent power. What is a lithium battery for inverter?

Lithium offers unmatched performance, a longer lifespan, and better efficiency than traditional batteries. Whether you're setting up a home backup system, solar power solution, or mobile energy unit, this guide will walk you through everything you need to know about lithium batteries for inverters. Part 1.

Are all inverters compatible with all lithium batteries?

Not all inverters are compatible with all lithium batteries. Therefore, it is crucial to ensure that the inverter you choose is designed to work with the specific type of lithium battery you plan to use. Check Manufacturer Specifications: Both the battery and inverter manufacturers typically provide a list of compatible products.

Can a solar inverter be used with a lithium battery?

Integrating a solar inverter with a lithium battery can take your renewable energy setup to the next level. This combination allows for better energy storage, improved efficiency, and greater resilience during power outages. LiFePO4 batteries are particularly well-suited for solar applications because of their thermal stability and long cycle life.

Can lithium batteries be used in inverter-powered systems?

Lithium batteries can be used in a wide range of inverter-powered systems:  
Home power backup: Provides energy during power outages and ensures critical appliances stay running. Solar energy storage: Ideal for storing daytime solar generation for nighttime use.

What are hybrid inverters & lithium batteries?



As the world shifts toward sustainable energy solutions, hybrid inverters and lithium batteries are at the forefront of this change. A hybrid inverter enables the use of multiple power sources—solar, wind, and grid—while lithium batteries provide a reliable and efficient means of energy storage.

How do I choose a lithium battery for inverter use?

When selecting a lithium battery for inverter use, it is essential to understand the key specifications: Voltage (V): Most inverter systems use 12V, 24V, or 48V batteries. Higher voltage systems are more efficient for larger power loads. Capacity (Ah or Wh): Amp-hours or Watt-hours indicate how much energy the battery can store and deliver.



## Lithium battery that can be connected to the inverter

---



### [Can I Connect Inverter to Lithium Battery?](#)

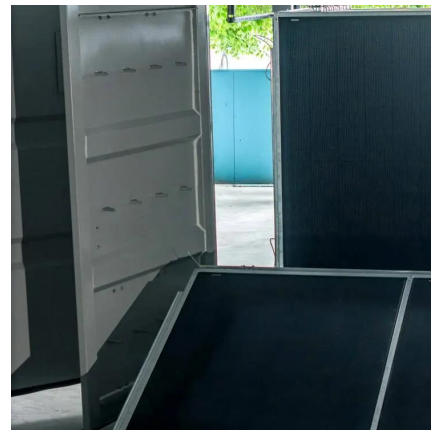
Yes, you can connect an inverter to a lithium battery. Lithium batteries, particularly Lithium Iron Phosphate (LiFePO4) batteries, are well-suited for use with inverters due to their ...

[WhatsApp](#)

### How to Install and Set Up LiFePO4 Batteries for Your Inverter

Connect the inverter to an AC outlet or your electrical system. Installing and setting up LiFePO4 batteries for your inverter is a straightforward process that can significantly enhance your ...

[WhatsApp](#)



### Complete Guide to Batteries for 110V 5kw Inverter System

Introduction You have the batteries and inverters but don't know how to connect them, right? More simply, it is the case where you have a 5kW 110V Inverter but don't know ...

[WhatsApp](#)

### [Can Lithium Batteries Work With Any Type of Inverter?](#)

When setting up solar energy systems or home energy storage, a common question arises: Are lithium batteries compatible with all inverters?



The short answer is no - proper ...

[WhatsApp](#)



### **Importance of Compatibility Between Inverter and Lithium Battery**

Lithium batteries are known for their longevity, but their lifespan can be significantly shortened if paired with an incompatible inverter. Inverters that are not designed to work with ...

[WhatsApp](#)



### **[Understanding Hybrid Inverters with Lithium Batteries](#)**

In the realm of renewable energy, hybrid inverters paired with lithium batteries are becoming increasingly popular for both residential and commercial applications. This ...

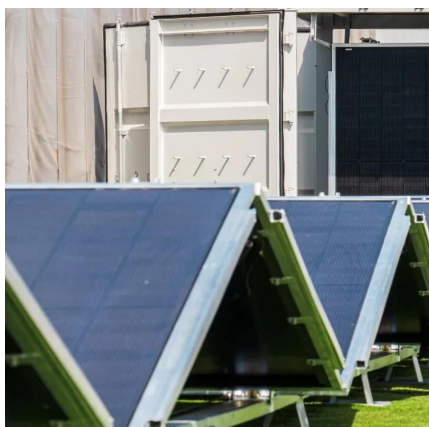
[WhatsApp](#)



### **Hybrid Inverter and Lithium Batteries: Setup Guide and Best ...**

set up communication between lithium batteries and a hybrid inverter with our detailed step-by-step guide. Ensure optimal performance and longevity of your energy storage system by ...

[WhatsApp](#)







## "Can a Lithium Battery Be Used with an Inverter That Doesn't ...

In this video, we discuss whether it's possible to use a lithium battery with an inverter that does not support a Battery Management System (BMS). We'll cover the potential risks, safety

[WhatsApp](#)



## Understanding the Basics of Connecting Lithium Batteries to Inverters

Connecting a lithium battery to an inverter is crucial for converting the stored DC (Direct Current) energy into usable AC (Alternating Current) for household or industrial ...

[WhatsApp](#)

## Best Lithium Battery For Inverter [Updated: September 2025]

The main types of lithium batteries available for inverters include Lithium Iron Phosphate (LiFePO4), Lithium Nickel Manganese Cobalt Oxide (NMC), and Lithium Cobalt ...

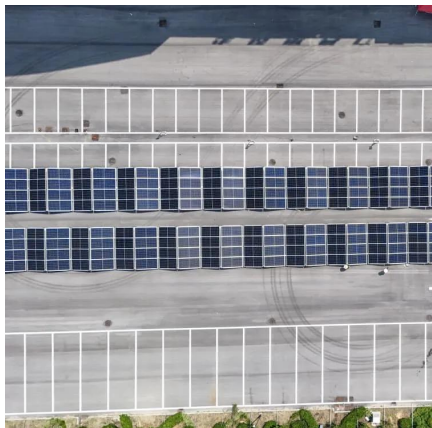
[WhatsApp](#)



[Expert Inverter Guide , Hubble Energy](#)

Officially we recommend installing a Cloudlink with the Hubble on a Axpert type inverter so you can monitor, control and troubleshoot your solar system and Hubble lithium batteries remotely.

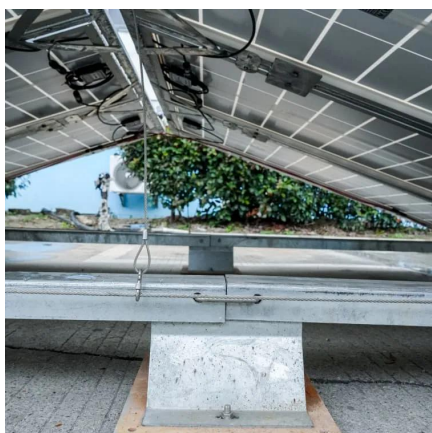
[WhatsApp](#)



### [Can You Charge a Battery While Using an Inverter?](#)

Why You Can Charge Batteries While the Inverter Runs To better understand why you can recharge a battery even when the inverter is connected, we have to take a look at how these ...

[WhatsApp](#)



### **Compatibility of Lithium-Ion Batteries with Existing Inverters**

This blog post will walk you through the essentials of lithium-ion batteries, their benefits, and the steps to seamlessly integrate them with your current inverter setup. From practical examples ...

[WhatsApp](#)

### **How to Properly #Connect a Lithium Battery to an Inverter - A ...**

In this video, we'll guide you through the process of connecting a #lithium #battery to an #inverter, ensuring both safety and efficiency for your energy system. Whether you're a DIY enthusiast

[WhatsApp](#)





## Contact Us

---

For catalog requests, pricing, or partnerships, please visit:  
<https://www.straighta.co.za>