

Lithium battery plus inverter low voltage protection





Overview

What causes lithium batteries to go in protection mode?

Connect with Darren on LinkedIn. The BMS causes lithium batteries to go in to protection mode when overheating, high currents, and high or low voltage. Learn more on how to prevent those and recharge your battery.

Where should I set LBCO on my inverter?

It is strongly recommended to utilize any low battery cut-off (LBCO) features available on your inverter to initiate a shutdown well before reaching the battery's Low Voltage Limit. then I would set the inverter LBCO just above where the BMS shuts off. Eliminates the need to power cycle the battery when this occurs.

What is lithium battery overcharge protection?

Lithium battery overcharge protection allows the battery to shut off and the current goes away. The battery will cool down but if it goes back into protection mode after the battery turns back on you may have to reduce your load, reduce the charge rate, or improve the ventilation around the batteries. Next is current protection.

What if a battery is low in a Su-Vastika inverter/ups?

However, you may consider setting a lower reserve level if you have a small battery. In Su-vastika Inverter/ UPS, the warning for low battery starts at 10.8 volts, and this gives a warning with audio and LCD/LED messages. If the user can reduce the Load, then this warning goes off as the battery voltage is recovered if the Load is reduced.

How many volts a battery does an inverter use?

Battery = 48VDC 700Ah Iron Edison LiFePo4 (lithium iron phosphate). The battery manual says, "It is strongly recommended to utilize any low battery cut-off (LBCO) features available on your inverter to initiate a shutdown well



before reaching the battery's Low Voltage Limit."

Which lithium batteries are safe?

RELiON lithium batteries are manufactured with the safest lithium chemistry, lithium iron phosphate (LiFePO_4). LiFePO_4 batteries are best known for their strong safety profile, the result of extremely stable chemistry.



Lithium battery plus inverter low voltage protection



[LOW VOLTAGE COMBOS - Lithium Batteries South Africa](#)

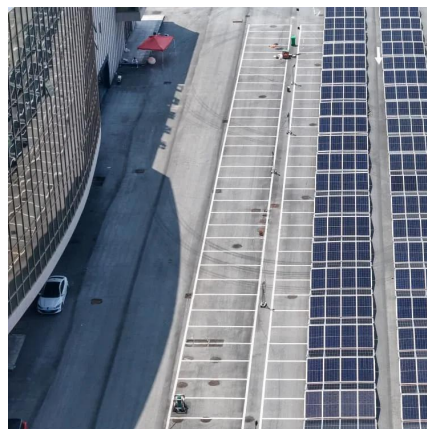
Lithium Batteries South Africa offers convenient low-voltage combo's that pair our trusted LBSA lithium batteries with compatible low voltage inverters for a complete plug-and-play energy ...

[WhatsApp](#)

How to Battery Protect against Low Discharge with Inverter

@clive87 The battery protect is unidirectional. Meaning is cannot charge and discharge through it. What you can do is set the inverter to switch off on battery voltage and ...

[WhatsApp](#)



Are Lithium-Ion Batteries Appropriate for Inverter Applications?

Lithium-ion (Li-ion) batteries have become the gold standard for modern inverter systems, surpassing lead-acid batteries in nearly every critical metric. Unlike their lead-acid ...

[WhatsApp](#)

Why I Switched to Lithium Ion Batteries for My Inverter: An ...

This feature prevents the inverter from operating when the battery voltage is lower than 15V, which is crucial for avoiding over-discharge and



potential damage to the battery.

[WhatsApp](#)



[Smart Lithium Battery Protection with Inverter](#)

The biggest issue facing users of battery powered Inverter systems is running the batteries flat. Voltage Sensitive relays are fine for small currents, but running an Induction ...

[WhatsApp](#)



Lithium Battery Management Systems and Battery Protection

There are 3 options to get your lithium battery out of low voltage protection mode: Option 1: Remove all load from the battery and wait for the battery voltage to recover high ...

[WhatsApp](#)



How to Battery Protect against Low Discharge with Inverter

What you can do is set the inverter to switch off on battery voltage and SOC. Set your system to shut off around 10% SOC min to allow for cell imbalances at lower soc.

[WhatsApp](#)





48V 15A Lithium Battery Charger, 1200W Pure Sine Wave Inverter

? 2-in-1 Inverter & Charger The DC HOUSE 48V pure sine wave inverter charger combines a 48V 1200W inverter with a 48V 15A battery charger. As an inverter, it offers over 90% ...

[WhatsApp](#)



Compatibility Analysis Between Lithium Batteries and Inverters

Maximum Voltage Tolerance: Fully charged lithium batteries can exceed nominal voltage (e.g., 54.6V for a 48V pack). The inverter must support this upper limit to avoid over ...

[WhatsApp](#)

What are the Low Voltage and High Voltage Protection of Inverters?

This article starts from the inverter structure and explains in detail how these protection settings prevent the battery from over discharging or over charging, prolonging the ...

[WhatsApp](#)



Contact Us

For catalog requests, pricing, or partnerships, please visit:
<https://www.straightta.co.za>