

Lithium battery pack charging constant voltage





Overview

Li-Ion cells require a constant current, constant voltage (CC/CV) type of charger. Charge current flows into the cell at constant rate of 0.5C to 1C rate until the cell voltage reaches 4.20 volts. At this point, the charger switches to constant voltage mode, sometimes referred to as CC to CV point.



Lithium battery pack charging constant voltage



Why Lithium Batteries Charge with Constant Current First, Then Constant

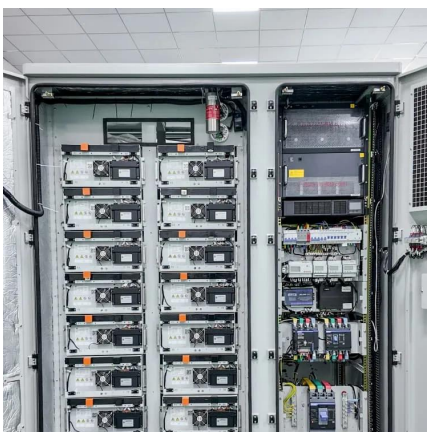
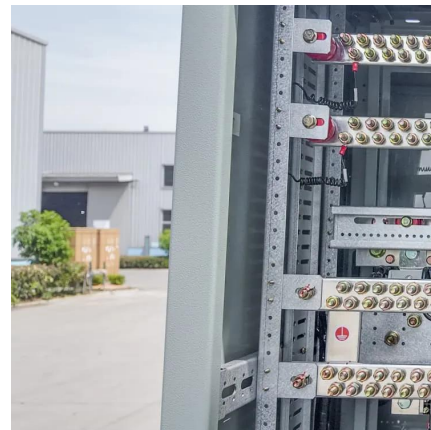
Explore why lithium batteries use constant current followed by constant voltage during charging. Understand how this method improves charging efficiency, battery safety, and ...

[WhatsApp](#)

Lithium-Ion Battery Chargers: How They Work, Basics, And Key

Constant Voltage (CV) Phase: Once the battery reaches the set voltage, the charger switches to constant voltage mode. In this phase, the voltage remains constant while ...

[WhatsApp](#)



Advantageous characteristics of constant voltage charging: A ...

Although constant voltage (CV) charging was traditionally used to maintain high charge levels in electrical devices, it is now proven to be an effective and rapid tool for ...

[WhatsApp](#)

An efficient and robust method for lithium-ion battery capacity

An efficient and robust method for lithium-ion battery capacity estimation using constant-voltage charging time Jufeng Yang a, Xin Li b c,



Xiaodong Sun a, Yingfeng Cai a, ...

[WhatsApp](#)



[Charging Lithium Batteries: The Basics , Battle Born](#)

This differs significantly from charging lithium batteries and their constant current stage and constant voltage stage. In the constant current stage, it will keep it steady while the ...

[WhatsApp](#)



12 Ways Lithium Battery Charging & Discharging Explained With ...

Constant Voltage (CV) charging happens once the battery reaches its maximum voltage, typically after the CC stage. In this mode, the charging system switches to maintaining ...

[WhatsApp](#)



[WHITE PAPER: LITHIUM BATTERY CHARGING](#)

Li-Ion cells require a constant current, constant voltage (CC/CV) type of charger. Charge current flows into the cell at constant rate of 0.5C to 1C rate until the cell voltage reaches 4.20 volts. At ...

[WhatsApp](#)





Why Lithium Batteries Charge with Constant Current First, Then ...

Explore why lithium batteries use constant current followed by constant voltage during charging. Understand how this method improves charging efficiency, battery safety, and ...

[WhatsApp](#)



[Constant Current - Constant Voltage Charging](#)

Constant Current - Constant Voltage Charging (CC-CV) is where a battery cell is charged at a constant current until it reaches the maximum charging voltage at which point the ...

[WhatsApp](#)

What Are Lithium Battery Pack Charger Systems and How Do ...

How Do Lithium Battery Pack Charger Systems Function? Lithium battery pack charger systems manage energy transfer to lithium-ion cells using control algorithms. They ...

[WhatsApp](#)



Contact Us

For catalog requests, pricing, or partnerships, please visit:
<https://www.straighta.co.za>