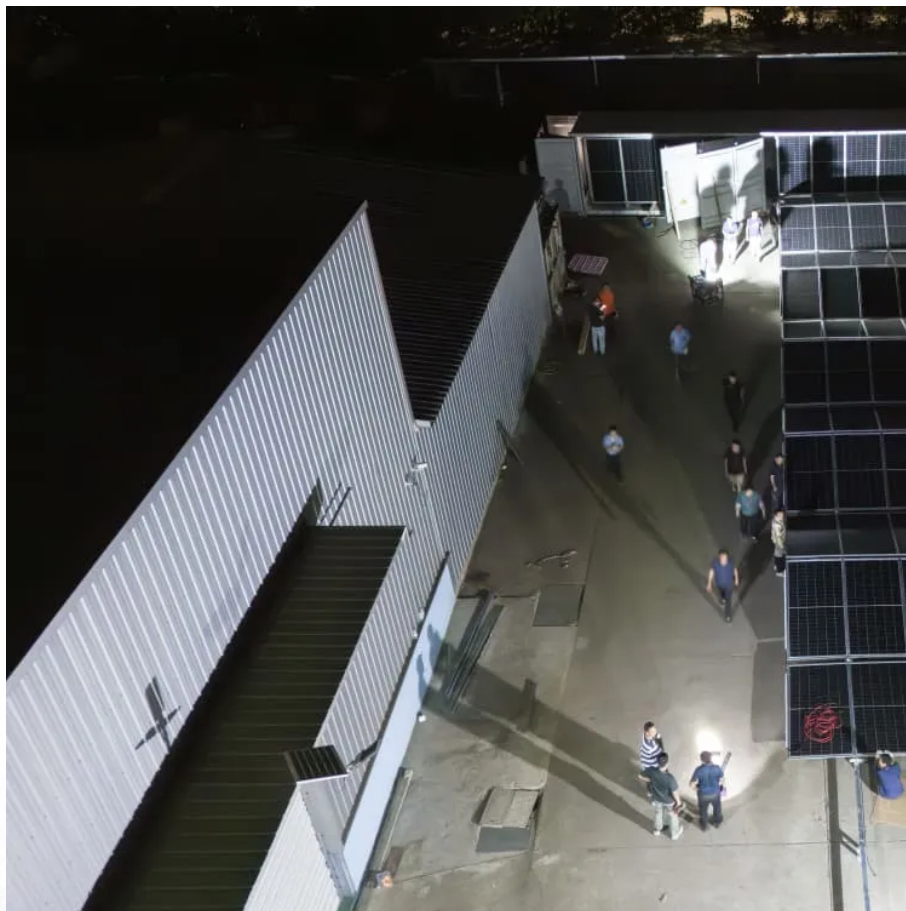


Lithium battery pack capacity and voltage





Overview

How to calculate lithium cell count in a battery pack?

To calculate lithium cell count in a battery pack, use the formula: Total Voltage = Number of Cells x Nominal Voltage of Each Cell. 1. Understanding nominal voltage of lithium cells. 2. Identifying required total voltage for the application. 3. Considering parallel connections for capacity. 4.

What is a 12V lithium battery pack?

Most commonly, a 12V lithium battery pack is made up of four lithium-ion cells, each with a nominal voltage of 3.7V. This configuration allows the pack to reach a total nominal voltage of approximately 14.8V when fully charged and around 12V when discharged.

How much voltage does a Li-ion battery pack have?

In Li-ion batteries, the voltage per cell usually ranges from 3.6V to 3.7V. By connecting cells in series, you can increase the overall voltage of the battery pack to meet specific needs. For example, a battery pack with four cells in series would have a nominal voltage of around 14.8V.

What is a lithium-ion battery pack?

Lithium-ion batteries, particularly the 18650 battery pack design, have become the industry standard for many applications due to their high energy density and long lifespan. Understanding how to calculate a lithium-ion battery pack's capacity and runtime is essential for ensuring optimal performance and efficiency in devices and systems.

How many Li-ion cells should a 12V battery pack have?

Recognizing the difference is crucial for applications needing specific voltage outputs. For example, to create a 12V battery pack using standard Li-ion cells, you would need at least four cells in series ($4 \times 3.7V = 14.8V$) to meet the voltage requirement.



How many cells are needed for a lithium battery?

To find the number of cells needed, divide the desired voltage by the voltage of a single cell. If a typical lithium cell operates at 3.7 volts, then for 48 volts, you would need $48V / 3.7V =$ approximately 13 cells in series. Assess capacity requirements: The capacity of cells is measured in ampere-hours (Ah).



Lithium battery pack capacity and voltage



[Introduction: What Is a Lithium-Ion Battery Pack?](#)

These packs are made of multiple Li-ion cells (like 18650 or 21700) connected in series and/or parallel to provide specific voltages and capacities. Whether you need a 7.4V, ...

[WhatsApp](#)

[Lithium-Ion Information Guide , Houston, Texas USA](#)

Lithium-Ion Information Guide - Technology Profile
Battery packs built to customer specifications using Lithium-Ion and Lithium-Polymer cells have been Designed and Developed at SWE for ...

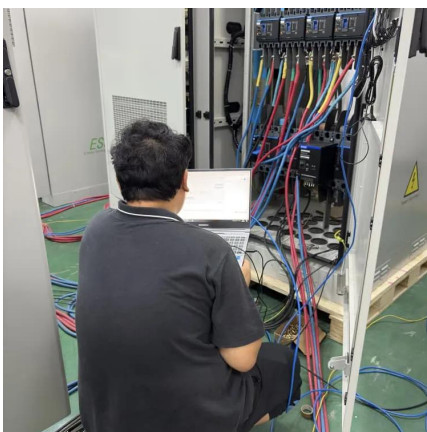
[WhatsApp](#)



How to Measure and Calculate Lithium ion Battery Capacity?

In this article, you will learn how to measure the capacity of lithium ion batteries, calculate the battery runtime, and understand the key factors that affect capacity. Let's take a ...

[WhatsApp](#)



[Battery Pack Calculator , Good Calculators](#)

Here's a useful battery pack calculator for calculating the parameters of battery packs, including lithium-ion batteries. Use it to know the voltage, capacity, energy, and maximum



discharge ...

[WhatsApp](#)



Lithium-Ion Battery Voltage: How Many Volts And Types ...

A lithium-ion battery has a nominal voltage of 3.7 volts per cell. When connected in series, the total voltage increases by 3.7 volts for each cell. This configuration allows for ...

[WhatsApp](#)



[Understanding Li-Ion Battery Packs: A Complete Guide](#)

Voltage and capacity are fundamental characteristics of any battery pack. In Li-ion batteries, the voltage per cell usually ranges from 3.6V to 3.7V. By connecting cells in series, ...

[WhatsApp](#)



Battery pack calculator : Capacity, C-rating, ampere, charge and

Onlin free battery calculator for any kind of battery : lithium, Alkaline, LiPo, Li-ION, Nimh or Lead batteries Enter your own configuration's values in the white boxes, results are displayed in the ...

[WhatsApp](#)





How Many Cells in a Lithium Battery Pack? A Complete Guide to ...

Most commonly, a 12V lithium battery pack is made up of four lithium-ion cells, each with a nominal voltage of 3.7V. This configuration allows the pack to reach a total ...

[WhatsApp](#)



Contact Us

For catalog requests, pricing, or partnerships, please visit:
<https://www.straighta.co.za>