

Lithium battery pack and battery pack in parallel





Overview

Yes, you can link battery packs safely. First, charge each pack fully. Use a voltmeter to check the voltage output. Ensure each pack outputs at least 21V (e.g., 5 packs at 4.2V each) before connecting them. This step prevents damage.



Lithium battery pack and battery pack in parallel



[How to Balance Lithium Batteries with Parallel BMS?](#)

When designing a lithium battery pack, engineers have two primary options: connecting individual cells directly in parallel or connecting strings of cells in parallel. Each ...

[WhatsApp](#)

[Can a lithium battery pack be used in parallel?](#)

First off, yeah, a lithium battery pack can be used in parallel. But there are some important things to know before you go ahead and do it. When you connect lithium battery packs in parallel, ...

[WhatsApp](#)



[Handbook On Lithium Battery Pack Design](#)

The environment in which the battery pack is used and the electrical connection of the individual cells (series or parallel) are two key considerations when designing a battery pack and working ...

[WhatsApp](#)



Can You Link Battery Packs? Understanding Series Vs. Parallel

Yes, you can link battery packs together. However, it is important to consider how you connect them to avoid potential issues.



Connecting battery packs in series increases the ...

[WhatsApp](#)



[BU-302: Series and Parallel Battery Configurations](#)

Laptop batteries commonly have four 3.6V Li-ion cells in series to achieve a nominal voltage 14.4V and two in parallel to boost the capacity from 2,400mAh to 4,800mAh. Such a ...

[WhatsApp](#)



[Can You Mix Different Capacity Lithium Batteries?](#)

There are a few points you need to consider when wiring in parallel. Let's explore these three points. At the end of the article, you will find a diagram on how to wire these. First ...

[WhatsApp](#)



Lithium Batteries in Series and Parallel: In-Depth Analysis

Parallel Connection: Multiple battery positives are interconnected, as are the negatives, forming a battery pack with a larger capacity. In a parallel connection, the voltage remains constant while ...

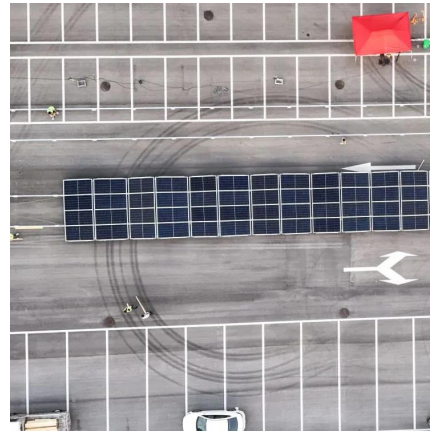
[WhatsApp](#)



How to Assemble a Lithium Battery Pack: Step-by-Step Guide for

Conclusion Assembling a lithium battery pack requires careful planning, the right tools, and a thorough understanding of series and parallel configurations. By following this ...

[WhatsApp](#)



Battery Cells, Modules, and Packs: Key Differences Explained

Battery Packs: Integrating Modules for Full Applications A battery pack consists of multiple battery modules integrated to form a complete energy storage solution. Packs are engineered to ...

[WhatsApp](#)

Contact Us

For catalog requests, pricing, or partnerships, please visit:
<https://www.straightta.co.za>