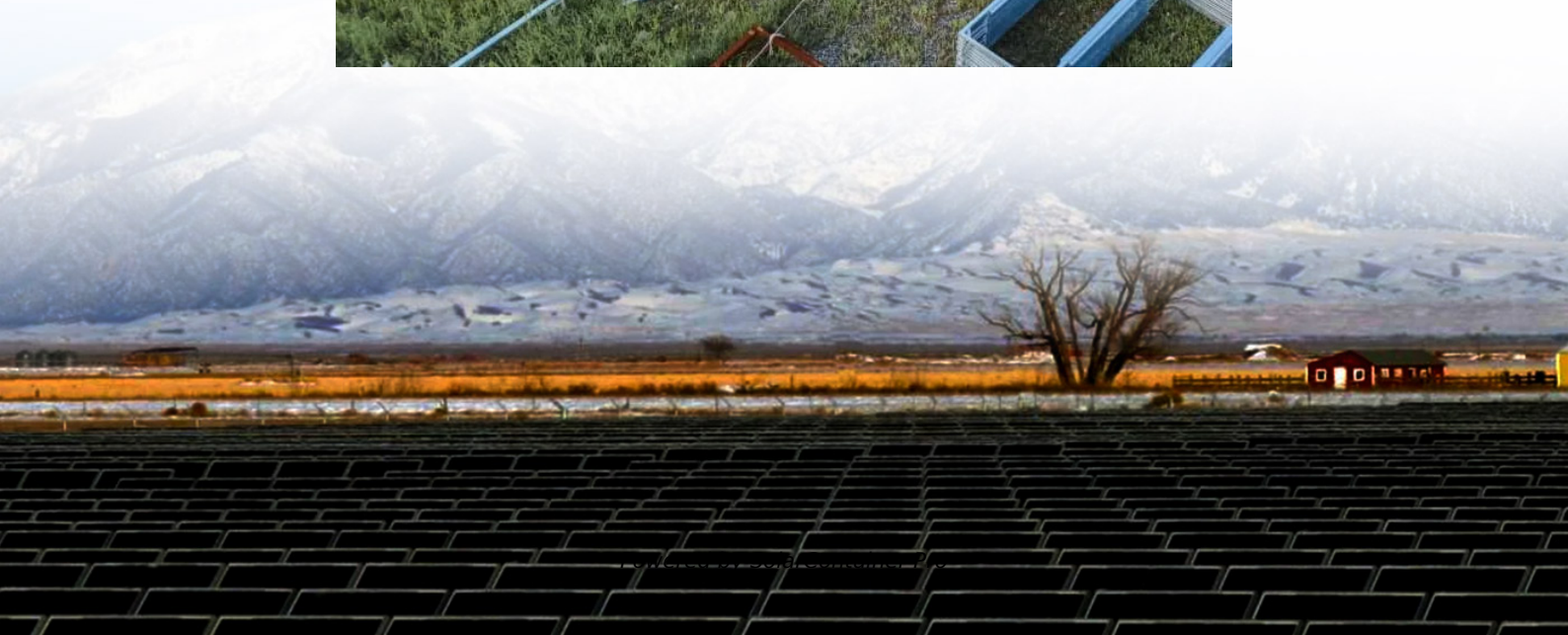


# Layout of 5G base stations for wind power communication





## Overview

---

Can EMC communicate with a 5G network?

However, the communication operator builds the BS to complement the 5G signal, and the establishment of a communication BS does not mean the establishment of a dedicated power wireless network. EMC can also communicate by accessing a normal 5G network but at a reduced reliability and transmission rate.

How many 5G Bs are there in China?

China has deployed 690,000 5G BSs, and the number of terminal connections exceeds 180 million.

How does a base station work?

As shown in Figure S3 each user accesses a base station, and the BS then allocates a channel to each new user when there is remaining channel capacity. If all of the channel capacity of a BS is occupied, a user cannot access this BS and must instead access another BS that is farther away.



## Layout of 5G base stations for wind power communication

---



### Synergetic renewable generation allocation and 5G base station

The growing penetration of 5G base stations (5G BSs) is posing a severe challenge to efficient and sustainable operation of power distribution systems (PDS) due to their huge energy ...

[WhatsApp](#)

### [5G Base Station Prototyping: Architectures Overview](#)

The working out of new approaches to achieve the desired characteristics of 5G communication system with the use of rapid prototyping allows making a fast transition to the software design.

[WhatsApp](#)



### 5G and energy internet planning for power and communication ...

Our research addresses the critical intersection of communication and power systems in the era of advanced information technologies. We highlight the strategic ...

[WhatsApp](#)



### "5G +" Lighthouse Application Tour , 700MHz Band Wind Power ...

The 700MHz Wind Power 5G Private Network Smart Wind Power Plant Project was the world's first 5G private network project with a full core





network sunk into local areas, which has been ...

[WhatsApp](#)



### "5G +" Lighthouse Application Tour , 700MHz Band Wind Power 5G ...

The 700MHz Wind Power 5G Private Network Smart Wind Power Plant Project was the world's first 5G private network project with a full core network sunk into local areas, which has been ...

[WhatsApp](#)



### [5G base station using wind power generation technology](#)

A 5G, base station technology, applied in the field of base station communication, can solve problems such as increased operating costs, low solar energy conversion efficiency, and ...

[WhatsApp](#)



### Longyuan Power Completes Jiangsu's First Batch of Offshore 5G Base Stations

Based on the distribution of wind turbines in the wind farms and their internal layouts, the company chose to build 5G base stations on peripheral wind turbines to expand ...

[WhatsApp](#)





## Longyuan Power Completes Jiangsu's First Batch of Offshore 5G ...

Based on the distribution of wind turbines in the wind farms and their internal layouts, the company chose to build 5G base stations on peripheral wind turbines to expand ...

[WhatsApp](#)



## Optimal Scheduling of 5G Base Station Energy Storage Considering Wind

This article aims to reduce the electricity cost of 5G base stations, and optimizes the energy storage of 5G base stations connected to wind turbines and photovoltaics.

[WhatsApp](#)



## Power Consumption Modeling of 5G Multi-Carrier Base ...

However, there is still a need to understand the power consumption behavior of state-of-the-art base station architectures, such as multi-carrier active antenna units (AAUs), as well as the ...

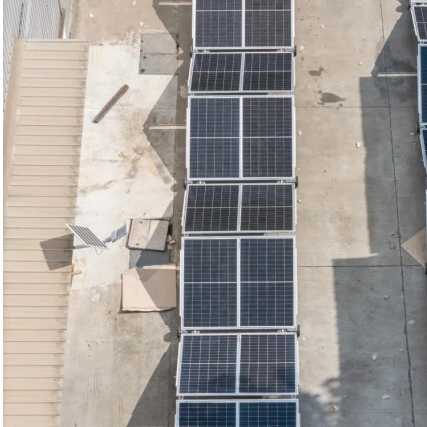
[WhatsApp](#)



## Longyuan Power Completes Jiangsu's First Batch of Offshore 5G Base Stations

This marked a remarkable breakthrough in the construction of offshore 5G network in Jiangsu. Workers install equipment on a wind turbine. Based on the distribution of wind ...

[WhatsApp](#)



### [Renewable energy powered sustainable 5G network...](#)

Renewable energy is considered a viable and practical approach to power the small cell base station in an ultra-dense 5G network infrastructure to reduce the energy provisions ...

[WhatsApp](#)



### [4G/LTE and 5G communication technology solutions](#)

Cellular-based networks are typically defined as networks transmitting a considerable amount of power to reach the end device, expanding coverage to the wind farm by using fewer base ...

[WhatsApp](#)



## Contact Us

For catalog requests, pricing, or partnerships, please visit:  
<https://www.straighta.co.za>