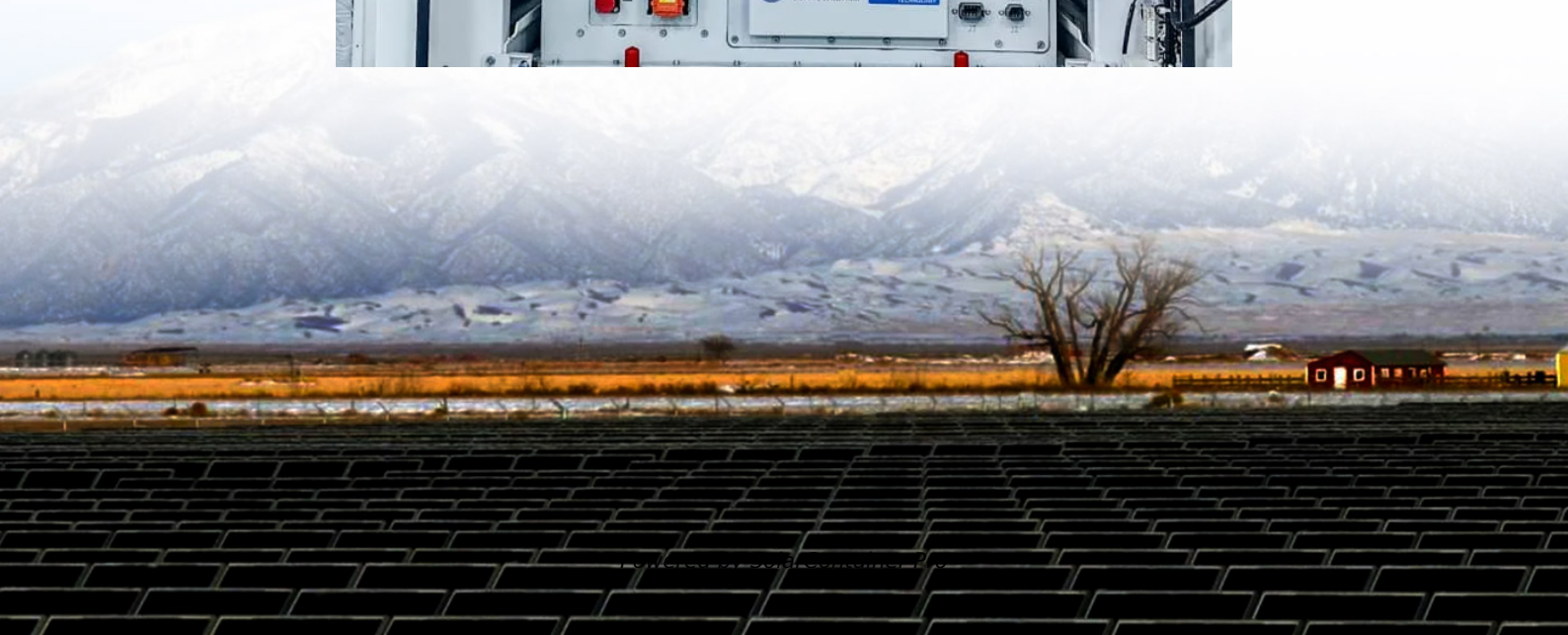


Large single-cell lithium battery connected to inverter





Overview

What is a lithium battery for inverter?

Lithium offers unmatched performance, a longer lifespan, and better efficiency than traditional batteries. Whether you're setting up a home backup system, solar power solution, or mobile energy unit, this guide will walk you through everything you need to know about lithium batteries for inverters. Part 1.

Are all inverters compatible with all lithium batteries?

Not all inverters are compatible with all lithium batteries. Therefore, it is crucial to ensure that the inverter you choose is designed to work with the specific type of lithium battery you plan to use. Check Manufacturer Specifications: Both the battery and inverter manufacturers typically provide a list of compatible products.

Can a solar inverter be used with a lithium battery?

Integrating a solar inverter with a lithium battery can take your renewable energy setup to the next level. This combination allows for better energy storage, improved efficiency, and greater resilience during power outages. LiFePO4 batteries are particularly well-suited for solar applications because of their thermal stability and long cycle life.

Can lithium batteries be used in inverter-powered systems?

Lithium batteries can be used in a wide range of inverter-powered systems:
Home power backup: Provides energy during power outages and ensures critical appliances stay running. Solar energy storage: Ideal for storing daytime solar generation for nighttime use.

How do I choose a lithium battery for inverter use?

When selecting a lithium battery for inverter use, it is essential to understand the key specifications: Voltage (V): Most inverter systems use 12V, 24V, or



48V batteries. Higher voltage systems are more efficient for larger power loads. Capacity (Ah or Wh): Amp-hours or Watt-hours indicate how much energy the battery can store and deliver.

Can a lithium battery run a large inverter?

Bottom line, if you want to run large inverter loads above 1000w on a lithium battery, make sure you choose an lithium battery that is designed for larger inverters or a system that can be paralleled safely with active balancing between the connected batteries.



Large single-cell lithium battery connected to inverter



[Lithium Batteries: What Size Inverter Can I Use?](#)

Bottom line, if you want to run large inverter loads above 1000w on a lithium battery, make sure you choose a lithium battery that is designed for larger inverters or a system that can be ...

[WhatsApp](#)

Compatibility of Lithium-Ion Batteries with Existing Inverters

Learn how to seamlessly integrate lithium-ion batteries with existing inverters for efficient and reliable power solutions. Maximize energy storage with Invertek Energy.

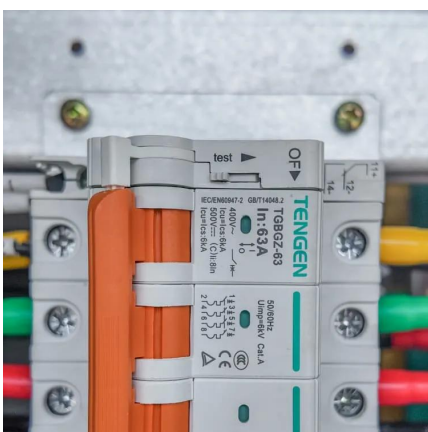
[WhatsApp](#)



[Can I Connect Inverter to Lithium Battery?](#)

Yes, you can connect an inverter to a lithium battery. Lithium batteries, particularly Lithium Iron Phosphate (LiFePO4) batteries, are well-suited for use with inverters due to their ...

[WhatsApp](#)



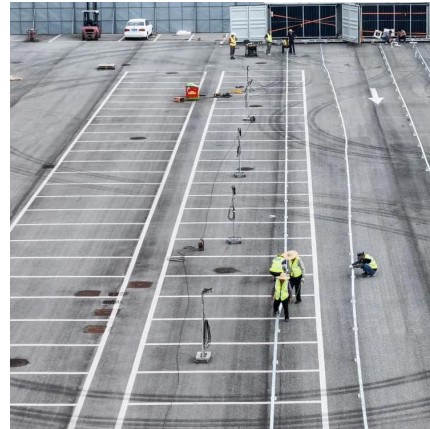
Hybrid Inverter and Lithium Batteries: Setup Guide and Best ...

In this guide, we will take you through the step-by-step process of setting up communication between lithium batteries and a hybrid inverter.



We will delve into the technical intricacies, ...

[WhatsApp](#)



Compatibility Analysis Between Lithium Batteries and Inverters

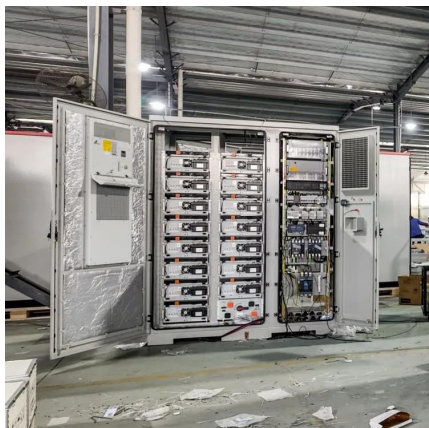
All-in-One BESS Design: GSL Energy's 5 KVA hybrid inverter integrates MPPT charge controller, inverter, and BMS, pre-configured to work with their LiFePO4 battery packs, ...

[WhatsApp](#)

Calculate Battery Size For Any Size Inverter (Using Our Calculator)

So I have made it easy for you, use the calculator below to calculate the battery size for 200 watt, 300 watt, 500 watt, 1000 watt, 2000 watt, 3000 watt, 5000-watt inverter

[WhatsApp](#)



[Can Lithium Batteries Work With Any Type of Inverter?](#)

When setting up solar energy systems or home energy storage, a common question arises: Are lithium batteries compatible with all inverters? The short answer is no - proper ...

[WhatsApp](#)



[Large inverter battery production process](#)

The battery manufacturing process of each company has its own special technical patented and secret processes, which are not bound to be revealed to masses. Introduction to Lead-Acid ...

[WhatsApp](#)



Connecting different batteries to inverters configured in parallel

I am planning to configure 3 inverters in parallel, can I connect different batteries to every inverter separately or all DC should be on 1 line and 1 battery system? I am asking this ...

[WhatsApp](#)



How to Install and Set Up LiFePO4 Batteries for Your Inverter

Connect the inverter to an AC outlet or your electrical system. Installing and setting up LiFePO4 batteries for your inverter is a straightforward process that can significantly enhance your ...

[WhatsApp](#)



Understanding the Basics of Connecting Lithium Batteries to Inverters

Connecting a lithium battery to an inverter is crucial for converting the stored DC (Direct Current) energy into usable AC (Alternating Current) for household or industrial ...

[WhatsApp](#)



What Will An Inverter Run & For How Long? (With Calculator)

I saw on many forums that most people are confused about what they can run on their 1000,1500,2000,3000, & 5000-watt inverter and how long will their inverter last with a ...

[WhatsApp](#)



Contact Us

For catalog requests, pricing, or partnerships, please visit:
<https://www.straighta.co.za>