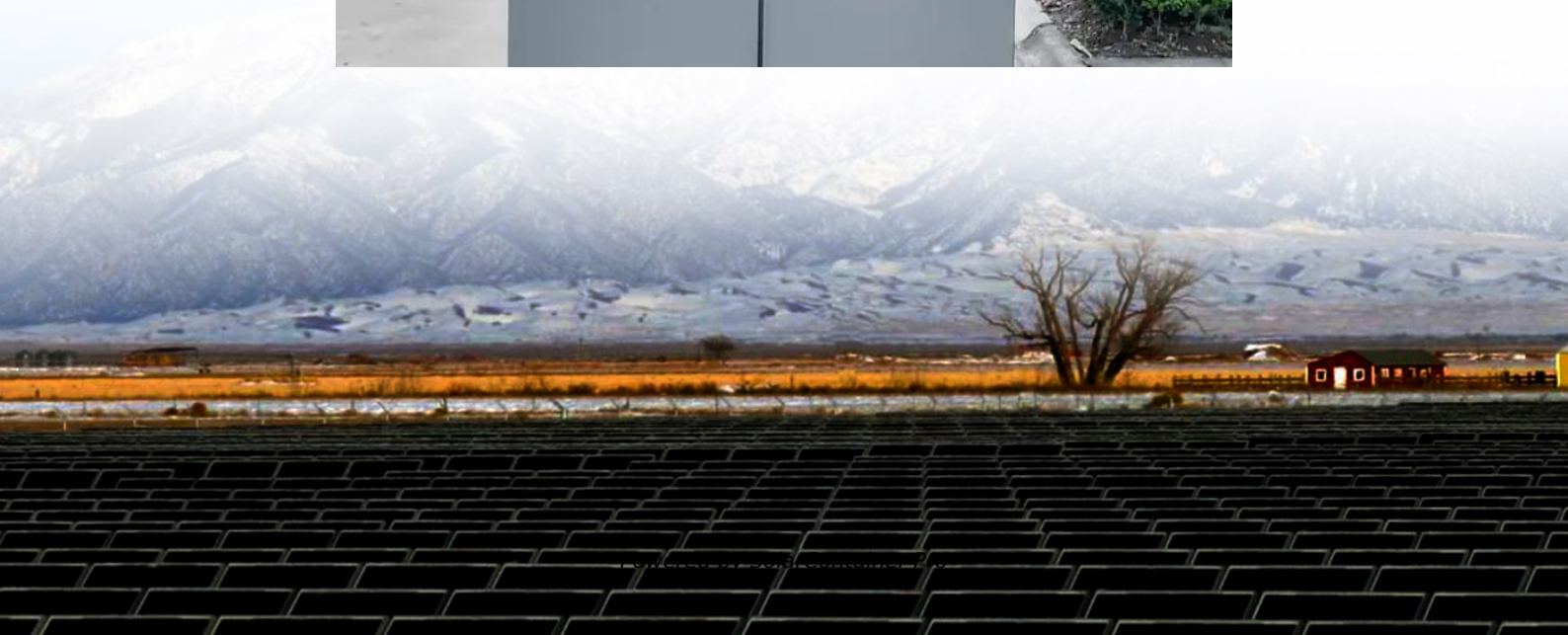


Large AC DC energy storage power supply





Overview

What is AC-coupled PV & energy storage?

In an AC-Coupled PV and energy storage solution (pictured in Figure 1, left side), both inverters employed can push power and can absorb or supply reactive power at the same time. The AC-Coupled system can produce peak PV power at the same time as the bi-directional inverter is discharging the full battery power to the grid.

What power supplies does advanced energy offer?

Advanced Energy offers configurable/modular, open frame, enclosed frame, capacitor chargers, PCB mount, and custom or modified standard power supplies with various cooling systems. These units range from 200W to 24,000W, catering to multiple applications. Who should use Advanced Energy's AC-DC power supplies?

.

What types of AC-DC power supplies are available?

Our extensive portfolio of low to medium power AC-DC power supplies covers a power range of 3 to 960 W. It includes open-frame and enclosed models, DIN rail modules, and external power supply adapters. Our range of medium to high power AC-DC power supplies mainly comprises highly configurable modular models and rack-mounting bulk power units.

What are AC-DC power supplies & AE Power shelves?

These AC-DC power supplies include individual power modules with output ratings of up to 3,000 W, enabling customers to configure bulk power systems with up to 24,000 W output capability. AE power shelves provide features such as centralized command and control and hot swapping of modules for easy maintenance.

Does advanced energy offer custom AC-DC power supplies?



Advanced Energy's AC-DC PSUs are used in various medical applications, including medical imaging, life sciences, electrosurgery, medical lasers, patient care, and surgical robotics. Additionally, AE offers customized AC-DC power supply solutions if standard units don't meet your requirements.

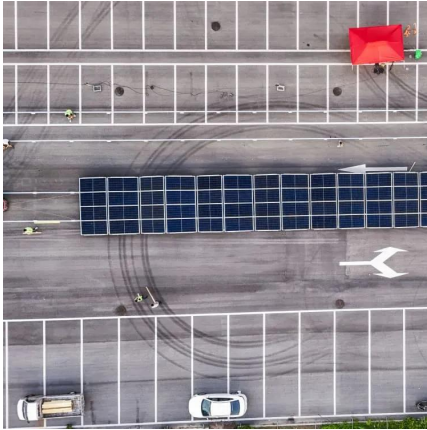
What is voltage (V) in a power supply?

Voltage (V) What is an AC-DC power supply?

An AC-DC power supply is a device that converts alternating current (AC) to direct current (DC) to provide electrical energy to a load. These power supplies are used in various applications, including medical and industrial settings.



Large AC DC energy storage power supply



Global First 10MWh AC-DC Integrated Energy Storage System!

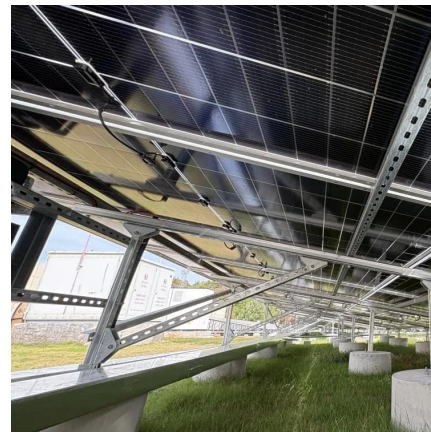
The new generation of large-scale energy storage system, PowerTitan2.0, is an excellent achievement of innovative technology and sustainable development. It provides a ...

[WhatsApp](#)

Highview Power project set to deliver liquid air energy storage to ...

23 hours ago· An engineering-led collaboration between Sulzer and Highview Power will help provide long-duration energy storage at Highview Power's new facility at Carrington, ...

[WhatsApp](#)



Next-Gen AC-DC Power Supplies Handle High Wattage for ...

New AC-DC power supplies released by Traco, Powerbox, and Advanced Energy address power needs for applications ranging from 130 W to 1800 W for industrial, advanced ...

[WhatsApp](#)



100kW DC200V~750V AC/DC power converter Energy Storage ...

This Energy Storage Hybrid PCS Cabinet: A versatile solution for industrial and commercial energy storage. Seamlessly integrates grid-



connected and off-grid modes, with bidirectional ...

[WhatsApp](#)



[AC-DC and DC-DC power converters for energy storage](#)

Large scale energy storage also allows today's electrical system to run significantly more efficiently, and that greater efficiency means lower prices, less emissions and more reliable ...

[WhatsApp](#)



[AC-DC and DC-DC power converters for energy storage](#)

Energy storage, as a solution to the above, provides a huge number of beneficial services and cost savings to our electric grid. Large scale energy storage also allows today's electrical ...

[WhatsApp](#)



[Large ac and dc energy storage power supply](#)

This article proposes an AC & DC hybrid power supply system with high-proportion renewable energy. The system includes photovoltaic generation, wind power generation, photothermal ...

[WhatsApp](#)





Energy Storage: An Overview of PV+BESS, its Architecture, ...

Battery energy storage can be connected to new and existing solar via DC coupling. Battery energy storage connects to DC-DC converter. DC-DC converter and solar are ...

[WhatsApp](#)



Contact Us

For catalog requests, pricing, or partnerships, please visit:
<https://www.straighta.co.za>