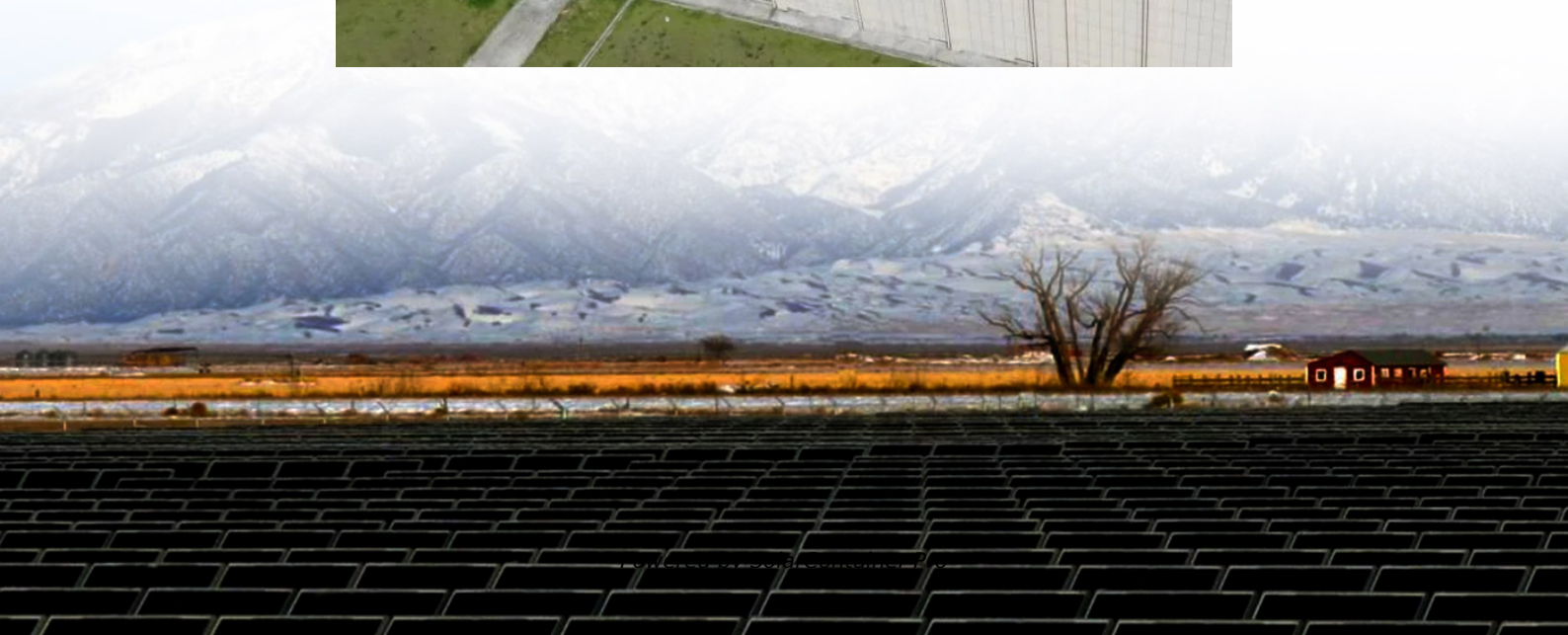


Laos Communication Green Base Station Tower





Laos Communication Green Base Station Tower



[China Tower Makes Its First Overseas Investment in Laos](#)

The Southeast Asia Tower aims to accelerate the development of communication infrastructure, including the Internet of Things and big data, in the Southeast Asian country.

[WhatsApp](#)

China Tower-invested Southeast Asia branch officially launched in Laos

The Southeast Asia Tower Company will mainly be engaged in the construction, maintenance and operation of communication towers, base stations, power supplies and other ...

[WhatsApp](#)



China Tower Corp to develop Laos communications infrastructure ...

The company is expected to sub-contract works for communication towers, base station room, power supply and other supporting facilities, and indoor distribution systems.

[WhatsApp](#)



[Ericsson Shows Green Base Station + Tower Designs](#)

Ericsson unveiled a series of towers for wireless base stations and antennas that are more environmentally friendly and better able to blend



in with a community than typical ...

[WhatsApp](#)



China Tower-invested Southeast Asia branch officially launched in Laos

China Tower, established on July 15, 2014, is mainly engaged in the construction, maintenance, and operation of a base station supporting facilities such as communication ...

[WhatsApp](#)



Wireless Communication Base Station Location Selection ...

1. Introduction Recently, with the rapid development of wireless communication technology, the enhancement of wireless network performance is concerned with meeting the ...

[WhatsApp](#)



Construction of all communication towers along China-Laos ...

The over-400-km railway will run from Boten border gate in northern Laos bordering China, to Vientiane with an operating speed of 160 km per hour. The electrified passenger and cargo ...

[WhatsApp](#)

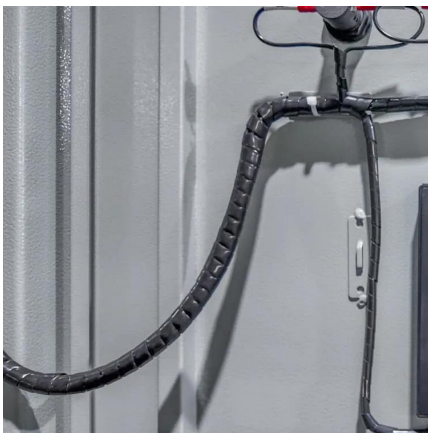
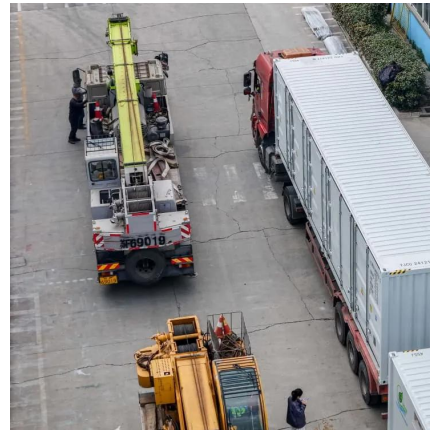




China Tower invests in communication infrastructure in Laos

China Tower, established on July 15, 2014, is mainly engaged in construction, maintenance, and operation of base station supporting facilities such as communication ...

[WhatsApp](#)



Chinese companies join hands with the Lao government to build ...

The Southeast Asia Tower has received an official letter from the Luang Prabang Provincial Government and the Government of the Republic of Phnom Penh on the ...

[WhatsApp](#)

Communication Tower Foundation Selection Criteria

A self-supporting tower is a free-standing tower with three or four legs connected by a latticework of braces. Self-supporting towers can either utilize a single foundation supporting all of the ...

[WhatsApp](#)



China Tower Invests Communication Infrastructure in Laos

The chairman and general manager of the board of directors of Southeast Asia Tower Co., Ltd. are appointed by the China Tower. As the controlling shareholder, the China Tower will also ...

[WhatsApp](#)



China Tower invests in communication infrastructure in Laos

The Southeast Asia Tower Company will mainly be engaged in the construction, maintenance and operation of communication towers, base stations, power supplies and other ...

[WhatsApp](#)



China Tower-invested Southeast Asia branch officially launched ...

China Tower, established on July 15, 2014, is mainly engaged in the construction, maintenance, and operation of a base station supporting facilities such as communication ...

[WhatsApp](#)

Contact Us

For catalog requests, pricing, or partnerships, please visit:
<https://www.straighta.co.za>