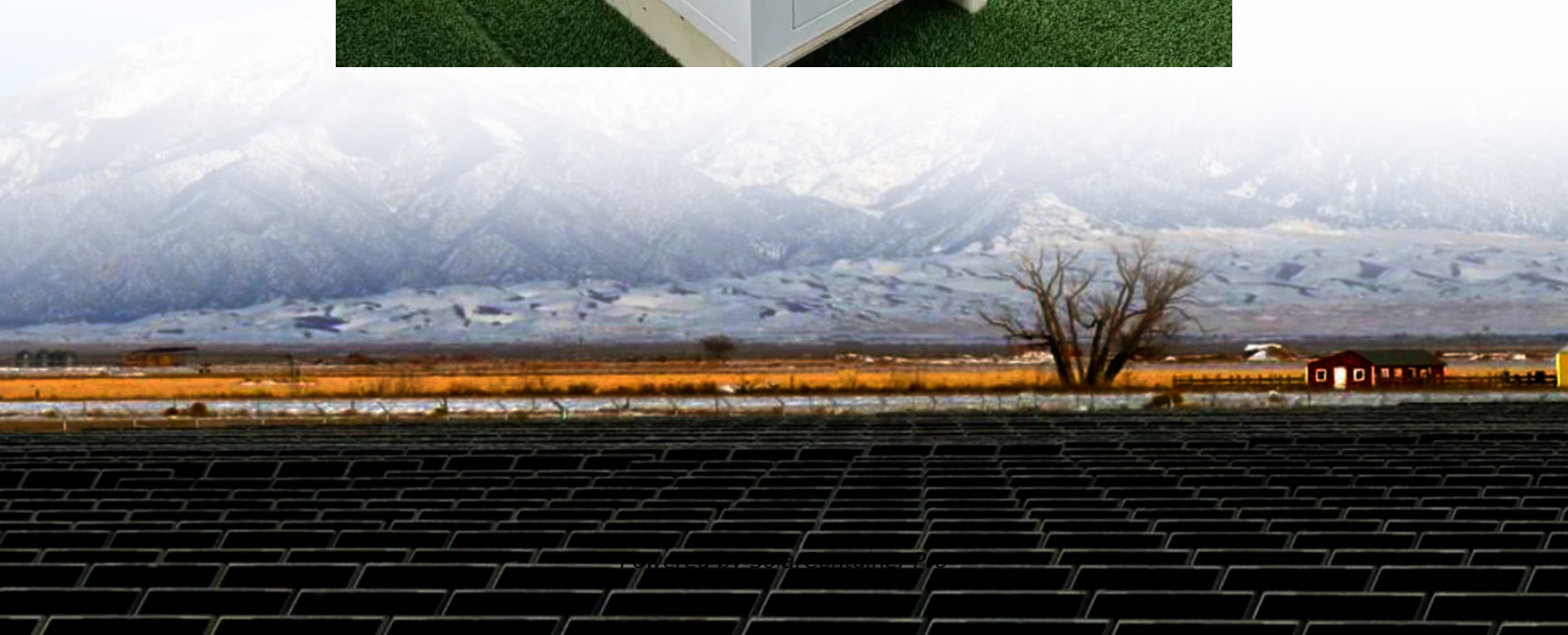


Kyrgyzstan double-glass photovoltaic module panels





Overview

Double-glass solar modules are made up of two layers of tempered glass that cover both sides of the solar panel. As snow accumulates on a typical solar panel or people stomp on it (during installation), the solar cells bend dramatically, resulting in microcracks on the cells.

There is a clear distinction between single and double glass solar panels. This difference should be clear by this- .

The front surface of double glass mono solar cells has an emitter layer and the back side has a dark covering. Passivated Emitter and Rear.

Typically, solar panels have a front glass panel and a back plastic sheet. These single-sided glass panels are supported by frames across the.

What is a double glass (Dual Glass) solar panel?

A double glass (Dual Glass) solar panel is a glass-glass module structure where a glass layer is used on the back of the modules instead of the traditional polymer backsheet. Double glass solar panels were originally heavy and expensive, but the lighter polymer backing panels gained most of the market share.

What is a glass-glass solar panel?

Glass-glass module structures (Glass Glass or Double Glass) is a technology that uses a glass layer on the back of the modules instead of the traditional polymer backsheet. Originally double-glass solar panels were heavy and expensive, allowing the lighter polymer backing panels to gain most of the market share. Thanks to producers such as:.

What is a dual-glass module?

Dual-glass type modules (also called double glass or glass-glass) are made up of two glass surfaces, on the front and on the rear with a thickness of 2.0 mm each. Some manufacturers, in order to reduce the weight of the modules, have opted for a thickness of 1.6 mm. DualSun has chosen to stay with a thickness of 2.0 mm for reasons explained below.



Why are double glass modules symmetrical?

Mechanical constraints on cells: the fact that the structure of the double glass modules is symmetrical implies that the cells are located on a so-called neutral line, the upper part of the module being in compression during a downward mechanical load and the lower glass surface being in tension.

What are the benefits of double glazed solar panels?

Double-glazed modules are characterized by increased reliability, especially for large-scale photovoltaic projects. They include better resistance to higher temperatures, humidity and UV conditions, and have better mechanical stability, reducing the risk of microcracks during installation and operation.

What is the thickness of a glass module?

The thickness of the front glass generally used for this type of structure is 3.2 mm. Dual-glass type modules (also called double glass or glass-glass) are made up of two glass surfaces, on the front and on the rear with a thickness of 2.0 mm each.



Kyrgyzstan double-glass photovoltaic module panels



[Kyrgyzstan Solar Photovoltaic Glass Market \(2025-2031\)](#)

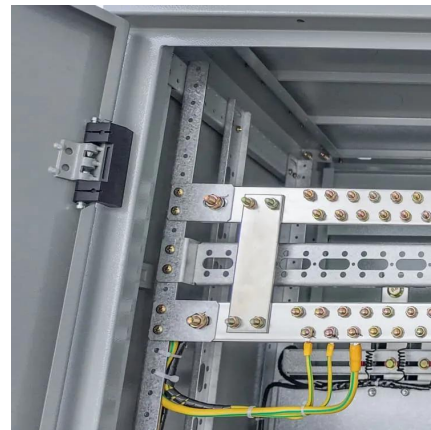
How does 6Wresearch market report help businesses in making strategic decisions? 6Wresearch actively monitors the Kyrgyzstan Solar Photovoltaic Glass Market and publishes its ...

[WhatsApp](#)

Solar Photovoltaic Glass: Classification and Applications

Demand for solar photovoltaic glass has surged with the growing interest in green energy. This article explores ultra-thin, surface-coated, and low-iron glass for solar cells, ...

[WhatsApp](#)



Experimental repair technique for glass defects of glass-glass

A failure of growing importance is the defect in the glass layer (s) of glass-glass PV modules. In this research, an experimental glass repair technique for glass-glass PV modules ...

[WhatsApp](#)

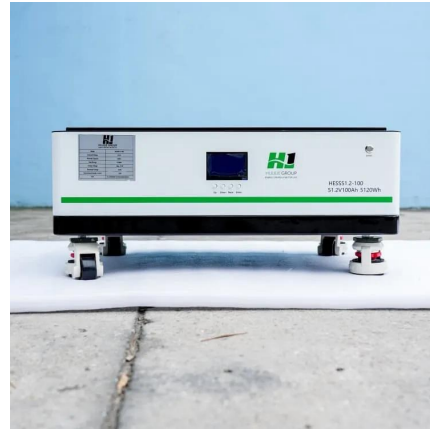
What is the Double Glass (Dual Glass) Photovoltaic Solar Panel?

What is the Double Glass Photovoltaic Solar Panel? Glass-glass module structures (Dual Glass or Double Glass) is a technology that uses a



glass layer on the back of the ...

[WhatsApp](#)



Flexible vs. Rigid Double-Glass Solar Panels: Which One is Your ...

For most long-term rooftop projects requiring high efficiency and stability, rigid solar panels (such as double-glass modules) are the preferred choice because they provide higher power output ...

[WhatsApp](#)



[Bifacial Solar Panels: What You Should Know . Renogy US](#)

Additionally, use reflective, light-colored materials underneath the panels to further enhance their performance. For those seeking high-quality bifacial solar panels, the Renogy Bifacial 220 ...

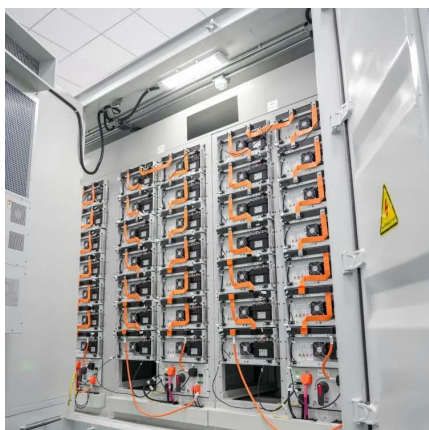
[WhatsApp](#)



[Double glass solar module . Maysun Solar](#)

Their dual-glass structure ensures superior durability, extends system lifespan, and reduces maintenance costs. With glass-glass modules, you benefit not only from enhanced efficiency ...

[WhatsApp](#)

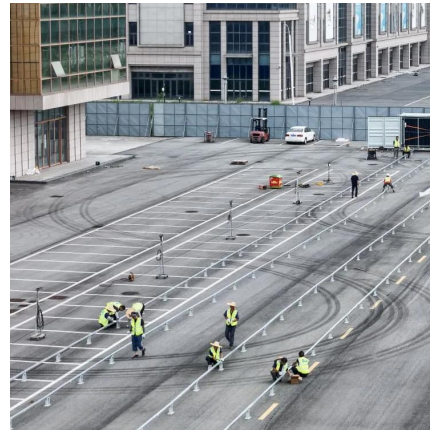




What are the advantages of dual-glass Dualsun modules?

To summarize the advantages cited above, the choice of a double glass structure means that the photovoltaic cells are better protected from external stress, in particular from the penetration of ...

[WhatsApp](#)



SUSTAINABLE SOLUTIONS FOR ENERGY GENERATION ...

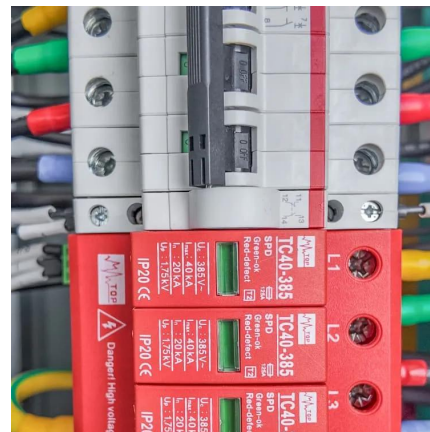
The module integrates perfectly into the façade and the solar technology becomes invisible. Moreover, solar modules with semi-transparent cell spacing, can be used in skylights, in ...

[WhatsApp](#)

2025 Complete Guide to Glass-Glass Solar Panels: The Top ...

Compared to traditional glass-backsheet modules, they offer greater durability and environmental resistance. The dual-glass structure provides enhanced protection for solar cells against ...

[WhatsApp](#)



Contact Us

For catalog requests, pricing, or partnerships, please visit:
<https://www.straighta.co.za>