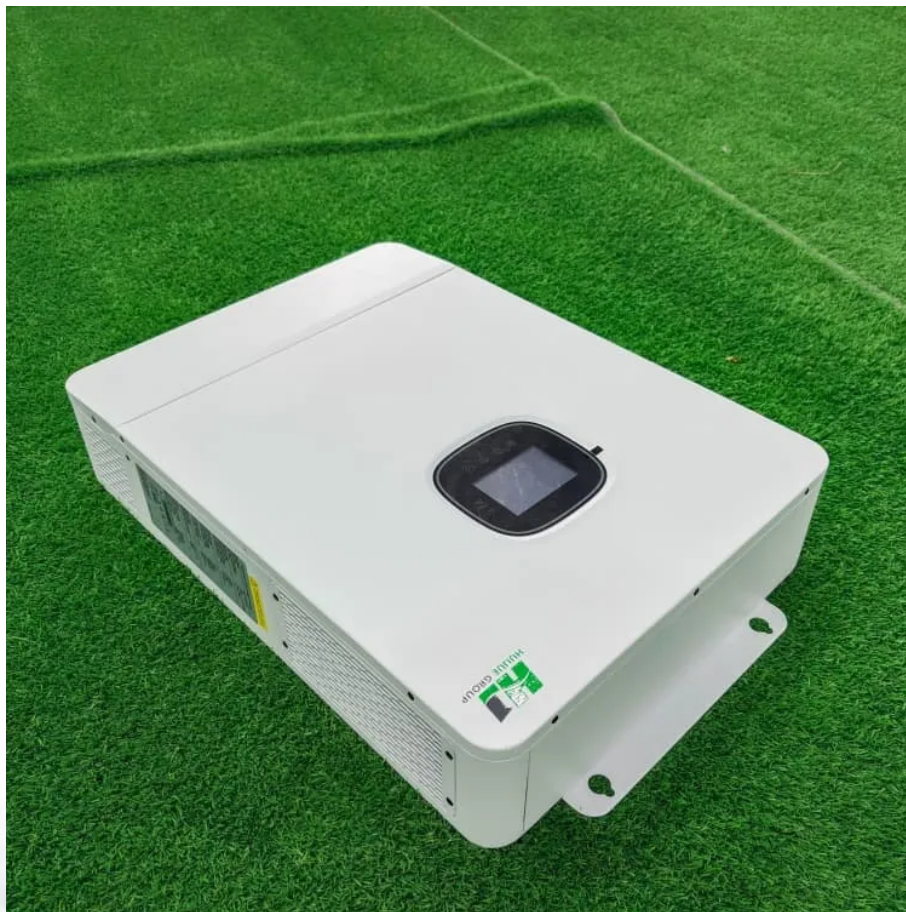


Is there a battery in the power distribution cabinet under the base station





Overview

What is a base station power cabinet?

The base station power cabinet is a key equipment ensuring continuous power supply to base station devices, with LLVD (Load Low Voltage Disconnect) and BLVD (Battery Low Voltage Disconnect) being two important protection mechanisms in the power cabinet.

Where should batteries be installed in a substation?

Batteries installed in unit substations, electrical equipment rooms and instrument rack rooms shall comply with the requirements of this section, Main Substation Design and Unit Substation Design. In these locations, stainless steel hoods vented to the outside shall be installed over batteries.

Where should a battery cabinet be installed?

The battery cabinet must be installed adjacent to the power cabinet. The following diagram shows the equipment layout for a typical new indoor Macrocell site. Notes: The cabinets may be placed with zero clearance to the rear wall. The cabinets may be placed with zero clearance to the side wall, however some clearance is recommended.

What are the minimum clearance requirements for a base station?

Minimum clearances must be maintained between the cabinets and surrounding building parts/cabinet to accommodate the installation and maintenance of the base station. The following constraints must be considered for cabinet clearances:.

How should a battery room be located?

This will reduce the cost and exposure of the dc distribution system. The battery room shall be located in a way that provides access for lifting equipment to be used during initial installation and future maintenance operations. The location shall be as free from vibration as practical.

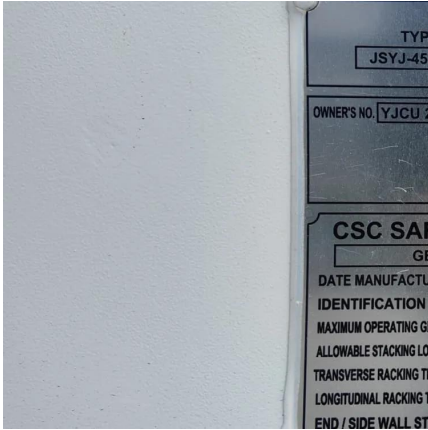


Do vented lead acid batteries need a separate battery room?

Vented lead acid batteries installed in medium voltage main substation buildings and unit substations, electrical equipment rooms and control system rack rooms shall not require a separate, dedicated battery room and shall be in accordance with SES E14-S02. The battery room and installation shall comply with IEEE 484, NFPA 70 and OSHA 29 CFR.



Is there a battery in the power distribution cabinet under the base



The basic things about substations you MUST know in the middle ...

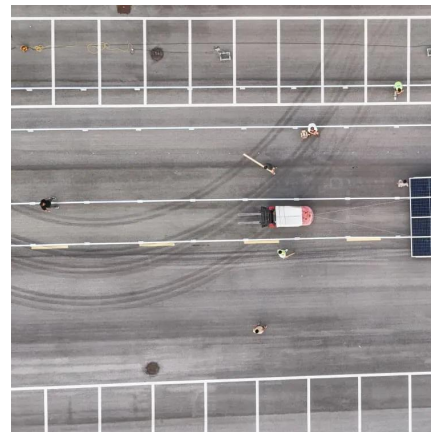
Note that distribution voltage level may vary in countries worldwide. Distribution feeders transport power from the distribution substations to the end consumers' premises. The ...

[WhatsApp](#)

[What components are inside a power distribution cabinet](#)

Busbars are metal bars (usually made of copper or aluminum) used to carry and distribute electrical power within the cabinet. They provide a common connection point for ...

[WhatsApp](#)



Base Power Will Install A Residential Storage Battery For \$2,000.

Base Power is currently buying much of its battery technology and the energy it delivers from suppliers while working on its own battery storage system that can be installed ...

[WhatsApp](#)

[Power Supply Box vs. Battery for base setup](#)

The battery plant (commercial term for battery strings and a charger) is 5 strings of 105 AH 12 volt AGM batteries and a modular rectifier (charger / power supply) that is 180 amp ...



[WhatsApp](#)



Evaluating the Dispatchable Capacity of Base Station Backup Batteries

Cellular base stations (BSs) are equipped with backup batteries to obtain the uninterruptible power supply (UPS) and maintain the power supply reliability. While maintaining the reliability, ...

[WhatsApp](#)



LLVD & BLVD in Base Station Power Cabinets

As two important protection mechanisms in base station power cabinets, LLVD and BLVD play a crucial role in ensuring the stable operation of base station equipment, extending battery life, ...

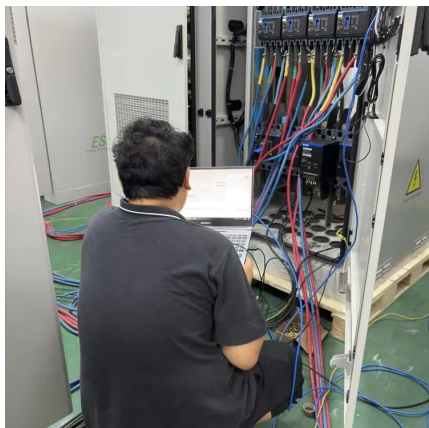
[WhatsApp](#)



Battery Room Design Requirements - PAKTECHPOINT

How do I connect my battery to my home WiFi network? This article will help you connect your battery to your WiFi. It will also help you troubleshoot internet connectivity issues.

[WhatsApp](#)





Working principle of llvd and blvd in base station power cabinet

The base station power cabinet is a key equipment ensuring continuous power supply to base station devices, with LLVD (Load Low Voltage Disconnect) and BLVD (Battery Low Voltage) ...

[WhatsApp](#)



[RATH® Analog AOR Systems Installation](#)

Power/Battery Indicator When proper power is applied and included battery connected, the AC Power LED should be on and the battery should be illuminated in one of the following: Red- ...

[WhatsApp](#)

What equipment does the base station energy storage cabinet ...

The equipment utilized in the base station energy storage cabinet comprises multiple essential components, which include: batteries, inverters, energy management ...

[WhatsApp](#)



Contact Us

For catalog requests, pricing, or partnerships, please visit:
<https://www.straighta.co.za>