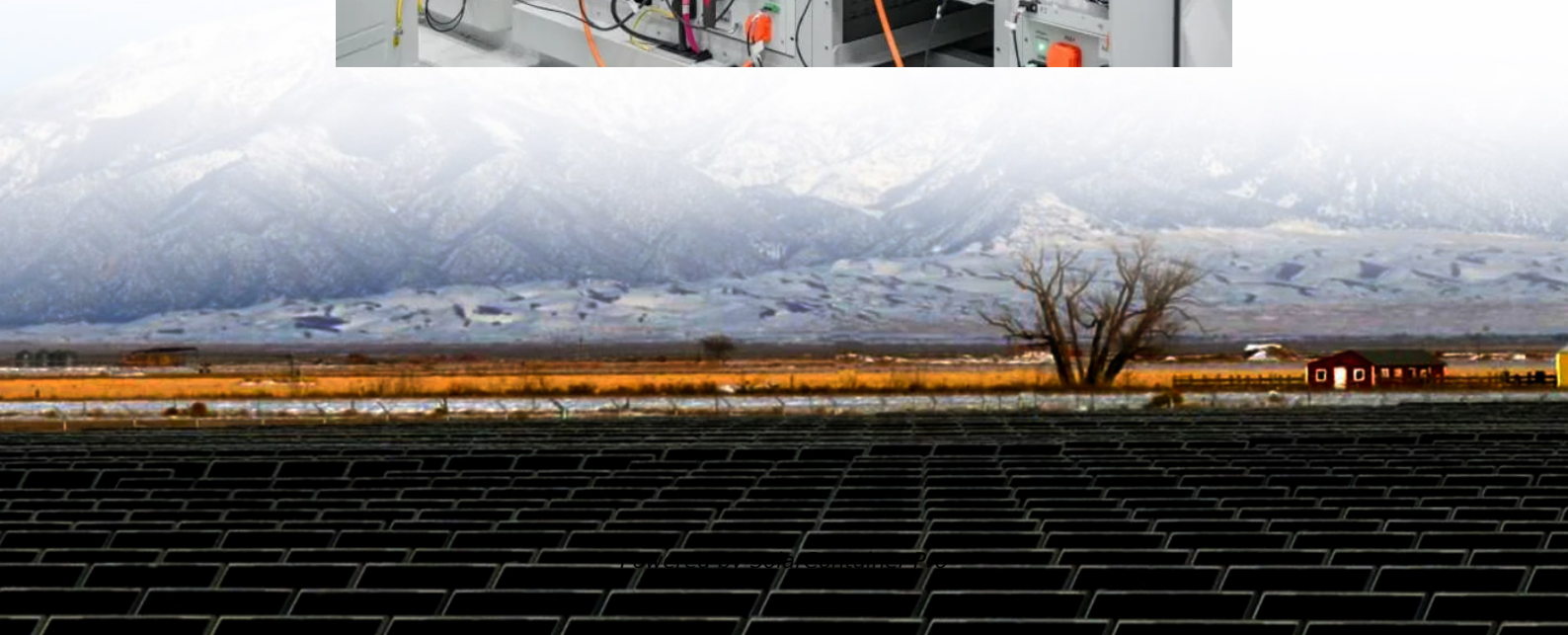


# **Is the power of photovoltaic inverters limited**





## Overview

---

Are solar inverters export limited?

It's becoming common for solar inverters to be export limited, so the maximum amount of power they send into the grid is less than they're capable of providing. This is done for three main reasons: The Good: It can allow a household to install a larger solar power system than would normally be allowed.

What are the disadvantages of a solar inverter?

The drawback to increasing a project's ILR occurs when the inverter is power limiting (i.e., when the power from the solar array exceeds the inverter's rated input power). Termed clipping, the time when inverters are power limited serve to reduce and flatten the system's output during the times of highest production.

What is a solar inverter?

A solar inverter is a key component in any solar power system, and its function is to convert the direct current (DC) output of the photovoltaic (PV) panels into an alternating current (AC) that can be used by household appliances.

Should you undersize a solar inverter?

Solar inverters are devices that convert the DC power produced by solar panels into AC power that can be used by home appliances. Many people believe that it is better to undersize their solar inverter so that it produces less power than what is needed by the appliances, but this is not always the case.

Can a rooftop solar system have a 5 kW inverter?

If they want a big solar system with an inverter larger than 5 kW, they must 'export limit' the inverter. Here's what that means. Rooftop solar works by turning sunlight into electric power. The power is first used to meet household



consumption, with any surplus exported to the grid for other people to use.

Can a solar array put out more power than an inverter?

According to the Clean Energy Council, you can have a solar array that can put out up to 30% more power than the inverter is rated for and remain within safe guidelines.



## Is the power of photovoltaic inverters limited



### Solis Seminar ?Episode 40?: Reasons for the low power generation of PV

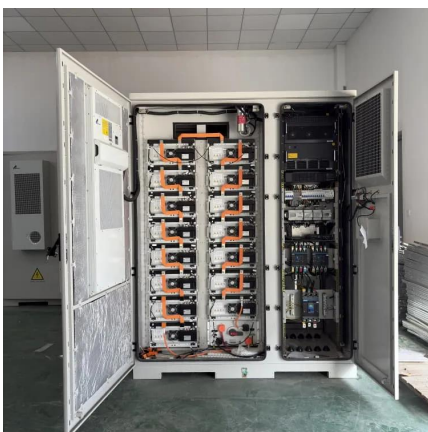
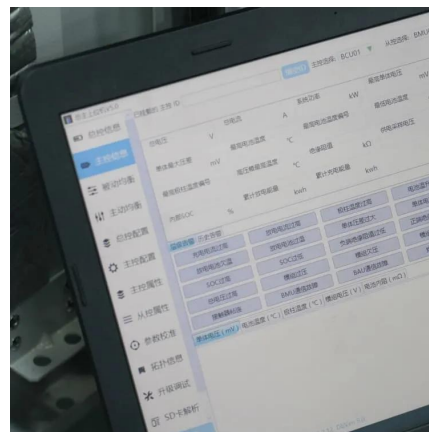
The power factor of the converter is corrected to 1. 9. Limited grid capacity: If the grid capacity is limited or the line loss is too large in the area, the grid will be over-voltage, ...

[WhatsApp](#)

### Grid power limitation

In practice, the power limitation cannot be performed at the injection level, since there is no device able to "absorb" any excess power (meaning to dissipate it as heat). The limitation is rather ...

[WhatsApp](#)



### How to use Power Automate flows to manage user access to ...

Manage list item and file permissions with Power Automate flows Grant access to an item or a folder Stop sharing an item or a file As per my knowledge, The Stop sharing an ...

[WhatsApp](#)

### [Get email with Message-Id using Power Automate](#)

The goal is to get an Outlook email with it's Message-Id from Power Automate. I get an email's Message-ID from my personal Outlook





Web mailbox: Next, I create a Power Automate flow to ...

[WhatsApp](#)



### Grid-connected photovoltaic inverters: Grid codes, topologies and

The proliferation of solar power plants has begun to have an impact on utility grid operation, stability, and security. As a result, several governments have developed additional ...

[WhatsApp](#)



### Can someone explain the maximum DC power of this inverter?

This inverter is set up to cater for up to 6 sets of strings without any combiner box, running at up to 800Vmpp and 11Amp each. (MPP is maximum power point) That's just about 52 800 W at ...

[WhatsApp](#)



### [Solar Inverter and Specification Terms You Need to Know](#)

Any given inverter has a maximum power rating (at the residential level, measured in W or kW). When solar supplies DC power in excess of that inverter's maximum power rating (what the ...

[WhatsApp](#)





## Impact of inverter loading ratio on solar photovoltaic system

Termed clipping, the time when inverters are power limited serve to reduce and flatten the system's output during the times of highest production. In this study, we examine ...

[WhatsApp](#)



## What happens to solar PV if the power output is limited by inverter

When this happens, the inverter will limit the amount of energy it's converting, resulting in power losses from your solar panel system. Hope this helps. The array operating point will move

[WhatsApp](#)

## [World-leading Solar Energy Company in Australia](#)

Sungrow, a leading solar energy company in Australia, has provided turnkey solar power solutions for residential, commercial & industrial and utility-scale projects throughout Australia.

[WhatsApp](#)



## [What is "POWER FACTOR" in the specs for an](#)

Some inverters can't support poor (low) power factor. Thus if you have a "1000w" inverter but your load PF of .7 or something, the inverter may be limited to output of around ...

[WhatsApp](#)



## Contact Us

---

For catalog requests, pricing, or partnerships, please visit:  
<https://www.straighta.co.za>