

Is the communication station the communication base station inverter





Overview

What are the characteristics of different communication methods of inverters?

The characteristics of different communication methods of inverters are obvious, and the application scenarios are different. In order to better weave the underlying network of energy digitization and intelligent development, choose the most appropriate communication method according to local conditions.

Why are base stations important in cellular communication?

Base stations are important in the cellular communication as it facilitate seamless communication between mobile devices and the network communication. The demand for efficient data transmission are increased as we are advancing towards new technologies such as 5G and other data intensive applications.

What are the components of a base station?

Power Supply: The power source provides the electrical energy to base station elements. It often features auxiliary power supply mechanisms that guarantee operation in case of lost or interrupted electricity, during blackouts. **Baseband Processor:** The baseband processor is responsible for the processing of the digital signals.

How does a low voltage inverter work?

The data signal is connected to the low-voltage busbar through the power line on the AC side of the inverter, the signal is analyzed by the inverter supporting the data collector, and the communication is finally connected to the local power station management system or the cloud platform through the LAN or the Internet 2. Application scenario 4.

How does a base station work?

It usually connects the device to other networks or devices through a



dedicated high bandwidth wire of fiber optic connection. Base stations typically have a transceiver, capable of sending and receiving wireless signals; Otherwise if they only send the trailer it will be considered a transmitter or broadcast point only.

What are the properties of a base station?

Here are some essential properties: Capacity: Capacity of a base station is its capability to handle a given number of simultaneous connections or users. Coverage Area: The coverage area is a base station is that geographical area within which mobile devices can maintain a stable connection with the base station.



Is the communication station the communication base station inverter



[Inverter communication mode and application scenario](#)

Serial inverters and energy storage inverters can be equipped with a data collector with a LAN port. The LAN port collector is connected to network devices such as routers through network ...

[WhatsApp](#)

The Future of Hybrid Inverters in 5G Communication Base Stations

Conclusion: As 5G networks expand, hybrid inverters will play a pivotal role in powering next-gen base stations--providing stable, cost-effective, and green energy solutions ...

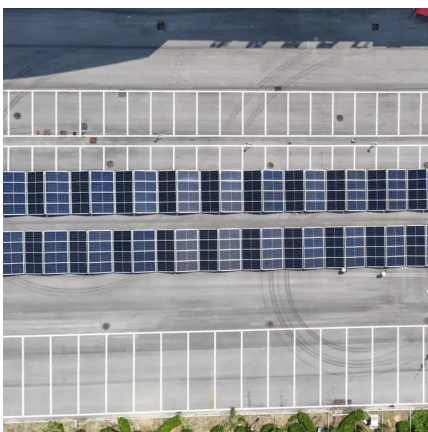
[WhatsApp](#)



Telecom Base Station PV Power Generation System Solution

The communication base station installs solar panels outdoors, and adds MPPT solar controllers and other equipment in the computer room. The power generated by solar energy is used by ...

[WhatsApp](#)

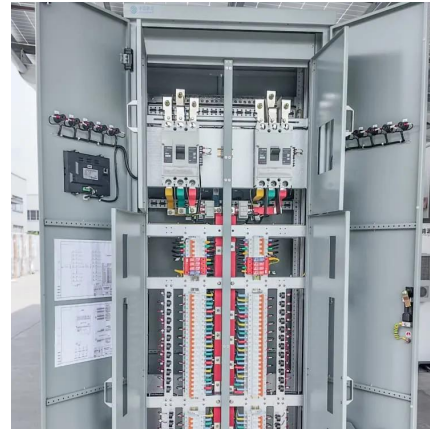


[Communication Base Station Energy Solutions](#)

Due to harsh climate conditions and the absence of on-site personnel to maintain fuel generators, the company required a reliable solution to ensure the base station's stable operation and ...



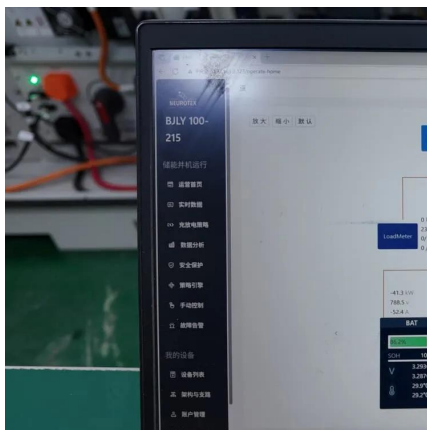
[WhatsApp](#)



Mobile communication base station tower- Junhao Technology

What is a vehicle mounted base station? Simply put, a vehicle mounted base station is the installation of base station equipment on a vehicle to make the base station "move". It is not ...

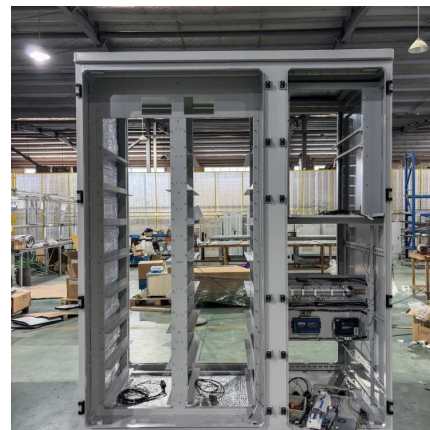
[WhatsApp](#)



Site Energy Revolution: How Solar Energy Systems Reshape Communication

The benefits far outweigh the limitations, making solar-powered communication base stations a viable, eco-friendly solution. In short, integrating solar energy systems into ...

[WhatsApp](#)



Cooling for Mobile Base Stations and Cell Towers

Application Overview Bulky compressor-based air conditioners have traditionally been used for removing heat generated by communications equipment installed in base station and cell ...

[WhatsApp](#)

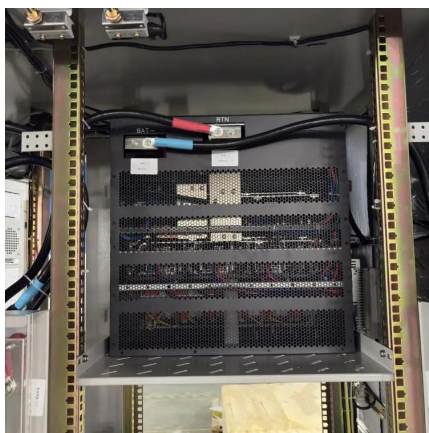




Detailed Analysis of Photovoltaic Inverter Communication ...

By analyzing the communication methods of various types of photovoltaic inverters, we can understand the characteristics of various inverters, which will help us when choosing ...

[WhatsApp](#)



What Is Base Station in Mobile Communication? - The Heart of ...

At the heart of this system lies the base station, a crucial component that enables seamless communication between mobile devices and the network. In this blog post, we will ...

[WhatsApp](#)

[Detailed explanation of inverter communication method](#)

Usually, each inverter is equipped with a GPRS/4G data collection module. Through the built-in SIM card, the collected data is uploaded to the inverter company's server through the wireless ...

[WhatsApp](#)



Telecommunication base station system working principle and ...

In communication power supplies, also known as switch rectifiers, they generally provide DC power with a voltage of -48V. After distribution, a voltage of -48VDC can be obtained.

[WhatsApp](#)



Contact Us

For catalog requests, pricing, or partnerships, please visit:
<https://www.straighta.co.za>