

# Is the 5G base station electric





## Overview

---

How much power does a 5G base station use?

Each nation has a different 5G strategy. For 5G, China uses 3.5GHz as the frequency. Then, a 5G base station resembles a 4G system, but it's on a much larger scale. For sub-6GHz in 5G, let's say you have a macro base station. The power levels at the antenna range from 40 watts, 80 watts or 100 watts.

What is a 5G base station?

A 5G network base-station connects other wireless devices to a central hub. A look at 5G base-station architecture includes various equipment, such as a 5G base station power amplifier, which converts signals from RF antennas to BUU cabinets (baseband unit in wireless stations).

Will 4G base stations be upgraded to non-standalone 5G?

Upgrading 4G base stations by software to non-standalone (NSA) 5G will still require hardware changes. It will act as an interim, but it will still not satisfy the need for true 5G network architecture. The number of base stations needed increases with each generation of mobile technology to support higher levels of data traffic.

How far can a 5G base station go?

Each 5G base station has a range of between 800-1000 feet, or 0.15-0.19 miles. It makes up for its limited range by surpassing 4G in other key areas: data transfer speeds (bandwidth), latency, and capacity. Whereas 4G promised peak speeds of 1 Gbps, 5G's max speed is set at 20 Gbps.

How do engineers design 5G base stations?

Engineers designing 5G base stations must contend with energy use, weight, size, and heat, which impact design decisions. 5G New Radio (NR) uses Multi-User massive-MIMO (MU-MIMO), Integrated Access and Backhaul (IAB), and beamforming with millimeter wave (mmWave) spectrum up to 71 GHz.



What are the prospects of the 5G base station market?

Because of the increased need for high-speed data with low latency, the 5G base station market is likely to develop significantly throughout the forecast period. Furthermore, the growth of the 5G IoT ecosystem and vital communication services is expected to provide lucrative prospects for the 5G base station market to expand.



## Is the 5G base station electric

---



### Mitsubishi Electric Achieves World's First Performance ...

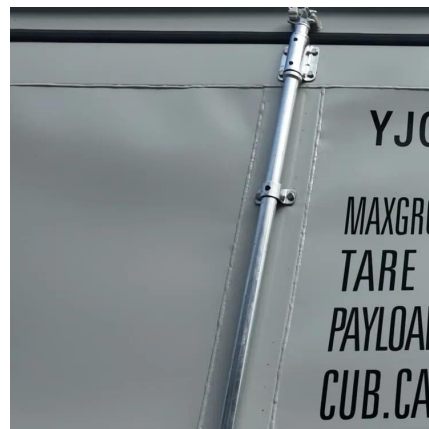
The compact module measures only 12.0mm x 8.0mm (prototype) thanks to the high-density mounting of components, which will enhance the installation efficiency of 5G ...

[WhatsApp](#)

### Maximum electric field estimation in the vicinity of 5G base ...

Results: The developed formula for electric field estimation is verified comparing the calculated values by its implementation to the practical results obtained by intensive measurements on a ...

[WhatsApp](#)



### Simulation of 5G interference to substation secondary equipment

This paper analyzes and deduces the electric field intensity produced by 5G base stations and terminals within substations, investigates the potential interference of 5G on secondary ...

[WhatsApp](#)

### 5G Copper IoT Suction Cup Antenna GSM/GPRS Car Base Station ...

Product Parameters Product Name: 5G Copper IoT Suction Cup Antenna Working frequency: 600-6000MHz Impedance: 50  $\Omega$  Antenna gain:



30DBI Standing wave ratio: [WhatsApp](#)



## **Towards Integrated Energy-Communication-Transportation ...**

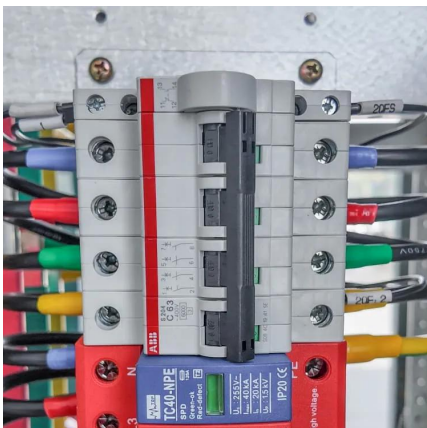
Index Terms--5G base station, electric vehicle, renewable power generation, causal inference, energy management system. I. INTRODUCTION  
In recent years, the rapid development of 5G ...

[WhatsApp](#)

## **Power Consumption: 5G Basestations Are Hungry, Hungry Hippos**

The increased power consumption of next-generation basestations may be one of the dirty little secrets of 5G, which might not be a secret much longer as operators roll out ...

[WhatsApp](#)



## **Size, weight, power, and heat affect 5G base station designs**

Energy use will increase dramatically with 5G because a typical gNodeB uses at least twice as much electricity as its 4G counterpart, MTN says. Higher opex makes it difficult ...

[WhatsApp](#)



### How Much Power Does a 5G Base Station Consume? - Smart Solar

On average, a 5G base station consumes between 1,000 to 3,000 watts. This is significantly higher than 4G base stations, which typically consume 500 to 1,500 watts.

[WhatsApp](#)



### Hybrid load prediction model of 5G base station based on ...

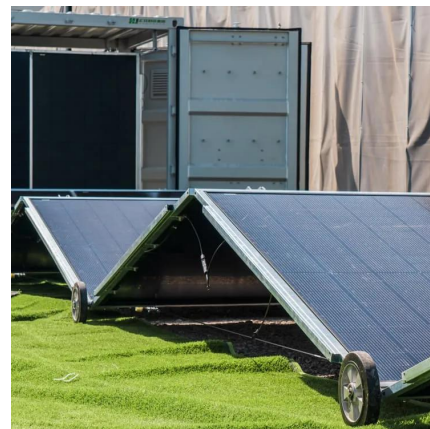
Abstract To ensure the safe and stable operation of 5G base stations, it is essential to accurately pre-dict their power load. However, current short-term prediction methods are rarely applied ...

[WhatsApp](#)

### Multi-objective cooperative optimization of communication base station

This paper develops a method to consider the multi-objective cooperative optimization operation of 5G communication base stations and Active Distribution Network ...

[WhatsApp](#)



### Electric Load Profile of 5G Base Station in Distribution Systems ...

This paper proposes an electric load demand model of the 5th generation (5G) base station (BS) in a distribution system based on data flow analysis. First, the electric load model of a 5G BS ...

[WhatsApp](#)



### Why 5G Base Stations Need General Energy Storage Systems ...

Let's cut through the hype: 5G base stations are energy vampires. While your phone gets all the glory streaming 4K cat videos, these unsung heroes guzzle 3-4 times more ...

[WhatsApp](#)



### Why does 5g base station consume so much power and how to ...

5G base stations use high power consumption and high RF signals, which require more signal processing for digital and electromechanical units, and also put greater pressure ...

[WhatsApp](#)

### Electric Load Profile of 5G Base Station in Distribution Systems ...

(DOI: 10.1109/tsg.2022.3150074) This paper proposes an electric load demand model of the 5th generation (5G) base station (BS) in a distribution system based on data flow analysis. First, ...

[WhatsApp](#)





## Contact Us

---

For catalog requests, pricing, or partnerships, please visit:  
<https://www.straighta.co.za>