

# Is a 5G base station a digital site





## Overview

---

The working range of a cell site (the range which mobile devices connects reliably to the cell site) is not a fixed figure. It will depend on a number of factors, including, but not limited to: • Height of antenna over surrounding terrain (). • The frequency of signal in use.

What is a 5G base station?

As the world continues its transition into the era of 5G, the demand for faster and more reliable wireless communication is skyrocketing. Central to this transformation are 5G base stations, the backbone of the next-generation network. These base stations are pivotal in delivering the high-speed, low-latency connectivity that 5G promises.

What is a base station in a mobile network?

The base stations represent the radio part of the mobile network, and one base station typically contains multiple cells which operate on specific radio frequencies. The radio network is what connects a mobile phone to the mobile network.

What is a cellular base station?

A cell site, cell phone tower, cell base tower, or cellular base station is a cellular -enabled mobile device site where antennas and electronic communications equipment are placed (typically on a radio mast, tower, or other raised structure) to create a cell, or adjacent cells, in a cellular network.

What are the advantages of a 5G base station?

Massive MIMO: The use of a large number of antennas allows the base station to serve multiple users simultaneously by forming multiple beams and spatially multiplexing signals. Modulation Techniques: 5G base stations support advanced modulation schemes, such as 256-QAM (Quadrature Amplitude Modulation), to achieve higher data rates.

Who owns cell sites & base stations?



The cell sites and base stations are owned by mobile network operators such as Vodafone, T-Mobile, Rogers, AT&T, Verizon etc. The base stations represent the radio part of the mobile network, and one base station typically contains multiple cells which operate on specific radio frequencies.

What is a base station called?

In 2G GSM networks, the base station is called Base Transceiver Station. The base station is called Node B in UMTS networks, eNodeB in LTE networks, and gNodeB in 5G networks. The cell sites and base stations are owned by mobile network operators such as Vodafone, T-Mobile, Rogers, AT&T, Verizon etc.



## Is a 5G base station a digital site

---



### [Cell sites and cell towers in a mobile cellular network](#)

A cell site is a location or "site" where a mobile network operator installs a 2G, 3G, 4G or 5G radio base station (cell tower). Mobile operators own or rent many cell sites within a ...

[WhatsApp](#)

## Chapter 2: Architecture -- Private 5G: A Systems Approach ...

To further confuse matters, 3GPP terminology often changes with each generation (e.g., a base station is called eNB in 4G and gNB in 5G). We address situations like this by using generic ...

[WhatsApp](#)



### **[Graphic News] Korea's 5G infrastructure ranked best in world**

The country recorded 593 5G base stations per 100,000 inhabitants, significantly surpassing Lithuania (328) and Finland (251). The OECD average stood at just 100 base ...

[WhatsApp](#)

## Unveiling the 5G Base Station: The Backbone of Next-Gen ...

Yes, 5G base stations are designed to coexist and interoperate with existing 4G infrastructure, enabling a gradual transition from 4G to 5G





networks. This allows operators to leverage their ...

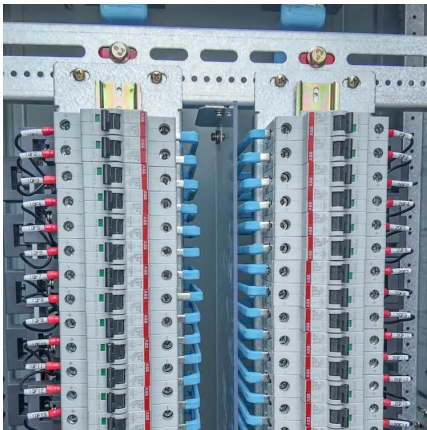
[WhatsApp](#)



[Learn What a 5G Base Station Is and Why It's Important](#)

What Exactly is a 5G Base Station? In essence, a 5G base station is a very sophisticated cell tower that connects your device-terms like phones and IoT devices-to the much larger 5G ...

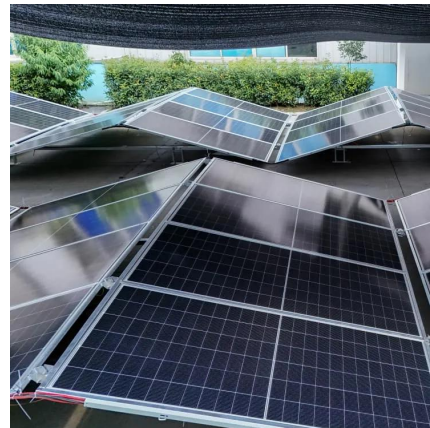
[WhatsApp](#)



[5G Towers vs. 4G: How Many More Are Needed?.. PatentPC](#)

A single 5G base station can handle up to 1 million connected devices per square kilometer, compared to only 100,000 for 4G. This is a game-changer for the Internet of Things (IoT), ...

[WhatsApp](#)



**Technical Requirements and Market Prospects of 5G Base Station ...**

5G base station chips play a critical role in the construction of 5G networks. As technology continues to advance, base station chips will demonstrate higher performance and ...

[WhatsApp](#)





## Cell site

SummaryOperationOverviewTemporary  
sitesEmploymentSpy agency setupOff-grid  
systemsCamouflage

The working range of a cell site (the range which mobile devices connects reliably to the cell site) is not a fixed figure. It will depend on a number of factors, including, but not limited to: o Height of antenna over surrounding terrain (Line-of-sight propagation).o The frequency of signal in use.

[WhatsApp](#)



## Contact Us

---

For catalog requests, pricing, or partnerships, please visit:  
<https://www.straighta.co.za>