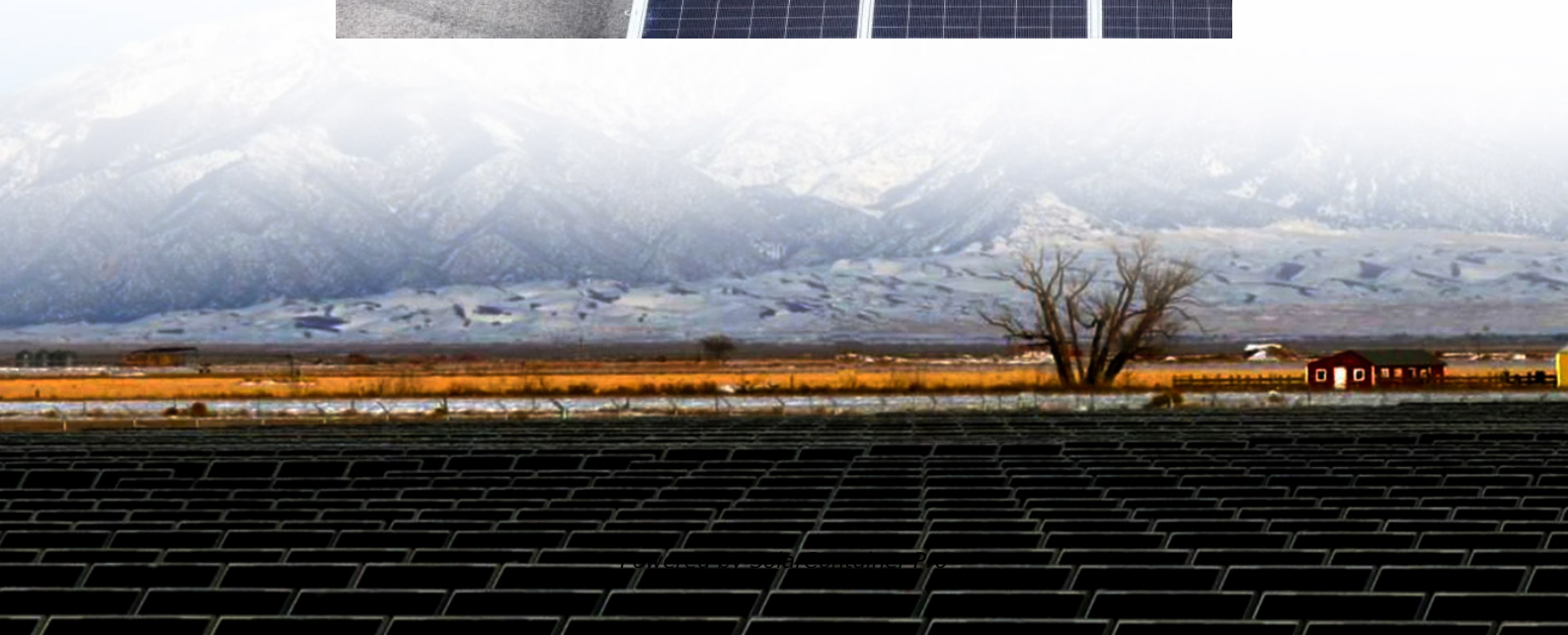


## **Is 12v inverter better or 6 kW**





## Overview

---

Why should you choose a solar inverter rated in kW?

Inverters must handle peak solar input, battery charging, and load output—all at once. Choosing an inverter rated in kW (not just kVA) gives you a clearer view of real usable power. This prevents undersizing and keeps your solar-storage system running efficiently.

How much power does a 12Kw inverter use?

My 18kw inverter can handle 3X the surge current (54kw) for 20seconds. This is the most important spec to me. It also uses about 300 watts/hr idle power. But the 12kw model which is 33% smaller still uses 270 watts. I just figure one extra solar panel to power the inverter. If you have a lot of heavy loads, it's not a big deal.

Can a kVA inverter power more than kW?

Because if you only look at kVA, you may think that the inverter can power more devices than it actually can. Meanwhile, if you only look at kW, you may buy an inverter with too small a kVA capacity, and the system will easily overload.

How many kW can a 10 kVA inverter handle?

If your inverter has a power factor of 0.9, then a 10 kVA inverter will deliver only 9 kW of real output. This means the inverter can only handle 10.2 kW of actual load—not 12. Understanding this gap helps avoid overspending on capacity or overloading your system. How does this apply to solar and hybrid inverter systems?

.

How to choose a solar inverter kVA rating?

In order for the inverter to work optimally, the inverter kVA Rating must match



the load requirements, adjust the capacity of the solar panels, and, if the inverter used is an off-grid inverter, affect the selection of battery capacity because the higher the kVA, the more current will be drawn from DC.

What wattage should a solar inverter be?

Solar inverter sizing is rated in watts (W). As a general rule of thumb, your solar inverter wattage should be about the same as your solar array's total capacity, within the optimal ratio. For example, a 6.6kW array typically uses a 5kW inverter.



## Is 12v inverter better or 6 kW

---



### 10 Questions You Should Know About 6kW Inverter Solar Systems

When it comes to solar energy solutions, many homeowners are increasingly turning to inverter solar systems, specifically the 6kW capacity. With the rising interest in ...

[WhatsApp](#)

### Choosing Between Growatt and SRNE: Seeking Advice on Inverter ...

As both inverters are relatively new, I'm not seeking opinions on longevity, but rather insights into which company, Growatt or SRNE, offers better product quality and general ...

[WhatsApp](#)



### What is the Inverter kVA Rating, and the Top 5 Mistakes to Avoid ...

In this article, you will get in-depth information about the kVA rating inverter, its application, the difference between KVA vs KW, the top 5 mistakes to avoid when selecting, and how to ...

[WhatsApp](#)

### 3.6kW or 5kW inverter? , Speak EV

The smaller inverter will probably be slightly more efficient, too, and even if it does limit for short periods that's not likely to have a significant impact on total generation I expect. ...





[WhatsApp](#)



### Advantages of the 6KW Hybrid Inverter for Your Home Solar System

In this article, we'll explore the essential benefits of using a 6KW Hybrid Inverter, highlight how it reduces noise, explain how it saves you money, and offer tips on ensuring you ...

[WhatsApp](#)



### Why does the cheaper Giandel 12V 1.6kw inverter support 4x ...

I'm building out my first home solar and battery system and comparing between 12V vs 48V systems. I'd like to go 48V to have a system that scales better in the future.

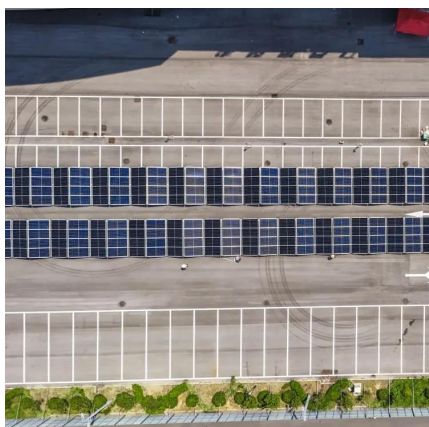
[WhatsApp](#)



### Understanding Inverter Power Ratings: kW vs kVA Explained

When I first started dealing with inverter specs, I often saw two values-- kW and kVA. At first, they seemed interchangeable. But later I realized they mean very different things, and ...

[WhatsApp](#)





## Understanding Solar Inverter Sizes: What Size Do You Need?

Broadly, inverter capacity should be equivalent to the system's capacity, but it's common practice to oversize the solar array (ie. a smaller inverter) for efficiency gains. ...

[WhatsApp](#)



## 12V vs 24V Inverter: What's The Difference & Which is Better

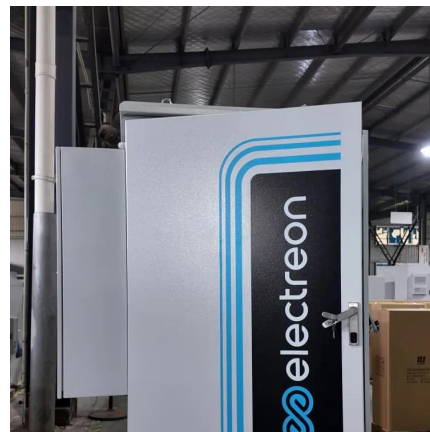
This article will explore the pros and cons of 12 voltage inverters vs 24 voltage inverters, considering factors such as energy loss, battery requirements, and suitability for different ...

[WhatsApp](#)

## Can One 12 Volt Battery Run a 1000 Watt Inverter?

Yes, a single 12-volt battery can run a 1000-watt inverter, but the runtime depends on several factors such as the battery's capacity, the inverter's efficiency, and the load ...

[WhatsApp](#)



## Contact Us

For catalog requests, pricing, or partnerships, please visit:  
<https://www.straightta.co.za>