

# Inverter rectifier module price





## Overview

---

What is a bridge rectifier module?

The bridge rectifier module is a diode commonly used for converting an alternating current (AC) input into a direct current (DC) output. The diode module that rectify commercial frequencies and high frequency diode modules for freewheel diodes in inverter circuits and for high-speed switching on a surge voltage absorbing circuit.

What is a rectifier-inverter system?

The critical load is fed through the rectifier-inverter scheme. The rectifier keeps the battery charged. Outage mode. During a loss of the ac main supply, the battery provides the energy for the inverter. Bypass operation.

What is a rectifier system?

A Rectifier system converts alternating current (AC) to direct current (DC) and provides the power necessary to charge batteries. With a focus on continuously improving the total cost of ownership, Best Plus Power's rectifiers, combined with advanced control and monitoring features, help to reduce both capital and operational expenditure.

What is the power factor of a rectifier system?

technology, and the power factor value reaches 0.99. A Rectifier system converts alternating current (AC) to direct current (DC) and provides the power necessary to charge batteries.

What is embedded communication power supply system (rectifier system)?

The embedded communication power supply system (Rectifier System) is suitable for small program-controlled switches, access networks, transmission equipment, mobile communications, satellite communications ground stations, microwave communications power supply, and can also be used for power supply for other communications equipment.



Why should you choose a rectifier system?

Our rectifier systems boast excellent power density while fulfilling space and weight requirements. They leave plenty of room for other equipment and create savings in packaging and transportation costs. In addition, their high efficiency lowers total energy consumption and reduces carbon footprint.



## Inverter rectifier module price

---



### **2 Terminal Bridge Rectifier 100A 1600V Diode Rectifier Power Module**

This item: 2 Terminal Bridge Rectifier 100A 1600V Diode Rectifier Power Module with Copper Plate Cooling for PWM Inverter Current Input. One of these items ships sooner ...

[WhatsApp](#)

### **DFA Inverter Diode Bridge Rectifier 200A A160 High Power 6 ...**

Compact and Lightweight Design: Despite its robust features, this Inverter Rectifier Bridge Controllable Module is compact and lightweight, allowing it to fit into narrow spaces ...

[WhatsApp](#)



### **1600V Rectifier Bridge Module 200A Amp High Power MDC Inverter**

?BASIC FEATURES OF RECTIFIER?The module of the High Power Rectifier Bridge Module is suitable for inverter. The forward current can reach up to 200A, and the ...

[WhatsApp](#)



### [1pc Fuji Inverter Rectifier Module Pvc300a-16](#)

Find many great new & used options and get the best deals for 1pc Fuji Inverter Rectifier Module Pvc300a-16 at the best online prices at eBay! Free shipping for many products!



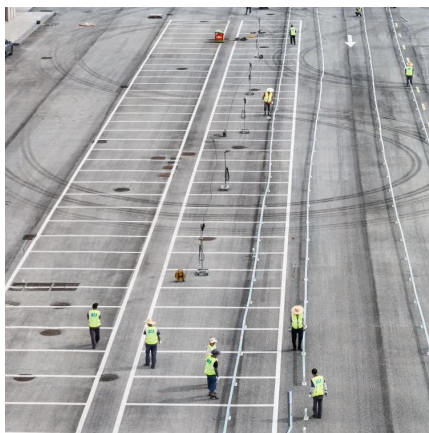
[WhatsApp](#)



[1pcs SEW inverter rectifier module MSW1 8031312](#)

Find many great new & used options and get the best deals for 1pcs SEW inverter rectifier module MSW1 8031312 at the best online prices at eBay! Free shipping for many products!

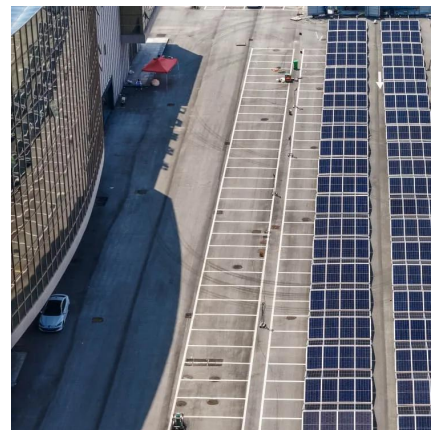
[WhatsApp](#)



### **Rectifier combines Rectifier, Inverter and Static Transfer Switch**

Eltek, a Delta Group company is today announcing the launch of the Rectifier, a power conversion module combining the functions of a rectifier, an inverter and a "static ...

[WhatsApp](#)



## **Contact Us**

For catalog requests, pricing, or partnerships, please visit:  
<https://www.straighta.co.za>