

# **Inverter power and actual power**





## Overview

---

How do inverters work?

Here's where inverters come in. Inverter power ( $P_i$ ) refers to the power output provided by an inverter, which converts direct current (DC) from sources such as batteries or solar panels into alternating current (AC) used by most household appliances.

What are inverters used for?

Inverters are essential components in uninterruptible power supplies (UPS) and whole-house backup systems. They provide seamless power during outages by converting stored battery power to AC electricity. Critical applications include:

What is the nominal power of an inverter?

This is the first value that an inverter displays; for example, an indicative form could be 500 W / 1000 W maximum. In this case, the nominal power is 1000 W. The nomenclature in the image above is also used. This is the amount of power that the inverter is capable of supplying continuously under normal operating conditions.

How to choose a DC/AC inverter?

Hence, when purchasing a DC/AC inverter, you should refer to the nominal power. In other words, if your installer tells you that you need a 1000 W inverter, they are referring to the nominal power. Additionally, we recommend checking out our post [Example of selecting a DC/AC inverter by AC output voltage and power](#).

Is a 10 kVA inverter enough?

For example, an inverter rated at 10 kVA with a power factor of 0.8 can only deliver 8 kW of real power. That means if your total appliance load is 10 kW, this inverter will not be enough.



What is the power factor of a solar inverter?

Most hybrid and solar inverters operate at a power factor between 0.8 and 1.0. The power factor directly impacts how much usable energy (kW) you can get from your inverter. If your inverter has a power factor of 0.9, then a 10 kVA inverter will deliver only 9 kW of real output. This means the inverter can only handle 10.2 kW of actual load—not 12.



## Inverter power and actual power

---



### **Inverter Efficiency: Understanding How Much Power You're ...**

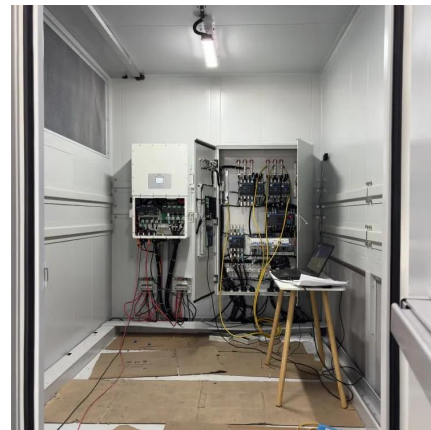
Many people think that once they connect their solar panels and batteries to an inverter, they're automatically using 100% of the power being generated. But that's not always ...

[WhatsApp](#)

### [High-precision Power Measurement of SiC Inverters](#)

This paper introduces a range of topics including expertise related to power, efficiency, and loss measurement of SiC inverters and motor drive systems, along with actual measurement ...

[WhatsApp](#)



### **The subtle relationship between inverter power and load power**

Being the cornerstone of new energy systems, the correlation between inverter power and load power holds immense significance. This piece delves deeply into this ...

[WhatsApp](#)



### [Inverter Power Calculator, Formula, Inverter Calculation](#)

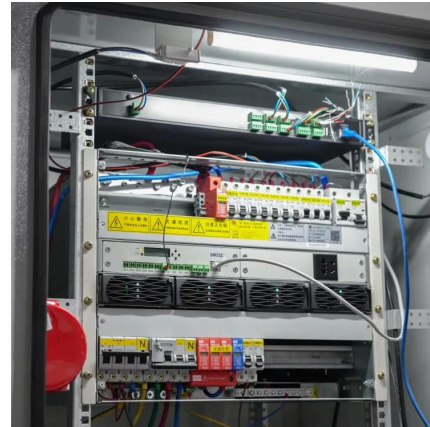
Enter the values of rated inverter power,  $RP$  (W) in watts and efficiency,  $E$  to determine the value of Inverter power,  $P_i$  (W). Imagine a solar panel





system. The panels generate direct current ...

[WhatsApp](#)



### [Frequently Asked Questions About Power Inverters](#)

Frequently Asked Questions about Power Inverters. Get answers to all of you power inverter questions including what a power inverter is and what it can be used for, how to size and ...

[WhatsApp](#)



### **Why Does Power Inverter Output Power Not Reach Rated Power**

What Is Rated Power on a Power Inverter? The rated power refers to the maximum continuous power the inverter can supply under ideal conditions, usually expressed in watts ...

[WhatsApp](#)



### **Understanding Inverter Power Consumption: Do Inverters Use Power ...**

Inverters, despite being turned off, can still draw a small amount of power. Most inverters today consume minimal power when not actively converting electricity. Typically, this ...

[WhatsApp](#)

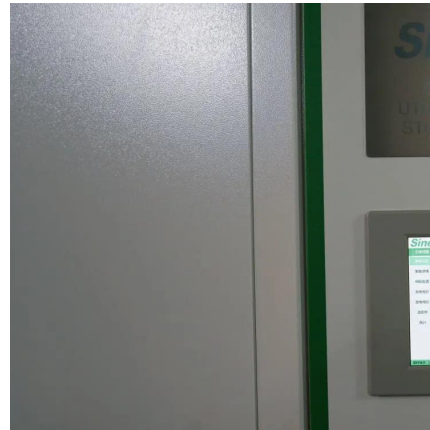




### Understanding Inverter Power Consumption: Do Inverters Use ...

Inverters, despite being turned off, can still draw a small amount of power. Most inverters today consume minimal power when not actively converting electricity. Typically, this ...

[WhatsApp](#)



### Understanding Inverter Power Ratings: kW vs kVA Explained

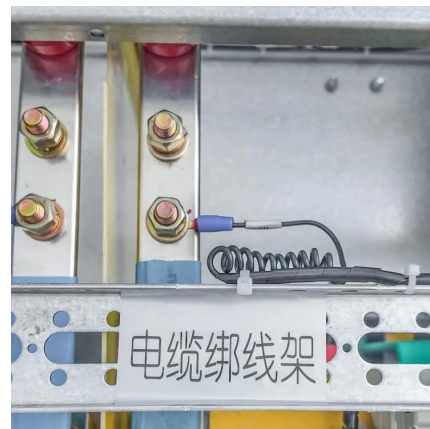
kW (kilowatts) measures real power--what actually powers your appliances. kVA (kilovolt-amps) measures apparent power--the total power the inverter handles, including both useful and ...

[WhatsApp](#)

### Is there a possibility to calculate the actual power of a speed

A pump is driven by an asynchronous motor which in turn is connected to the grid via an inverter. When the rated power of the motor for 50Hz is known, can I apply a linear relationship ...

[WhatsApp](#)



### Does the inverter generate the reactive power from the DC power

For example, if the inverter is fed with a 100 kW DC battery and the inverter has to run with 0.9 power factor, it will produce 90 kW of AC power, and the rest 10 kVar (assuming 100% ...

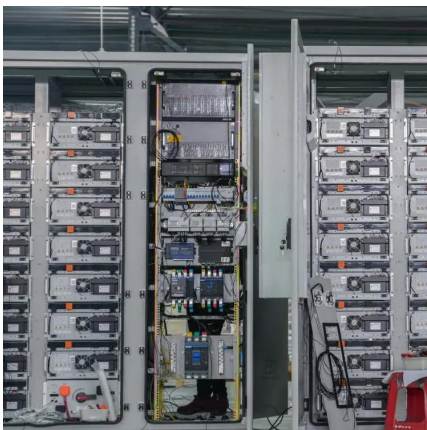
[WhatsApp](#)



### [Actual output of panels vs rated? : r/solar](#)

The output power of your PV system is related with the Inverter power output (DC/AC ratio). You can't gain more power then the rated AC power of the Inverter (s). Your DC power of the ...

[WhatsApp](#)



### **Inverter Power Draw: How Much Power Does an Inverter Use ...**

You can measure the actual power draw of your inverter using a multimeter by following a series of straightforward steps. This process involves determining voltage, current, ...

[WhatsApp](#)

## **Contact Us**

For catalog requests, pricing, or partnerships, please visit:  
<https://www.straighta.co.za>