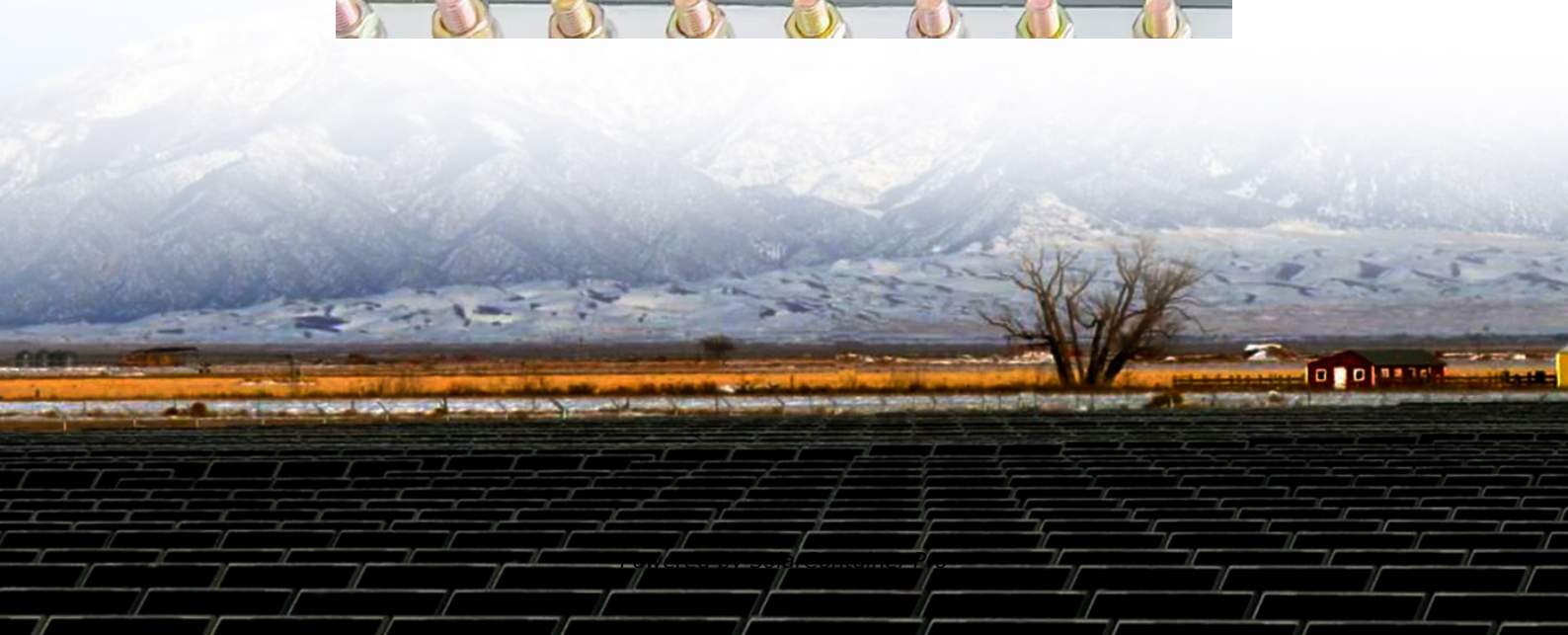


# Inverter continuous power





## Overview

---

What are the two most important aspects of inverter size?

The two most important aspects of inverter size are continuous power rating and maximum power. Continuous power rating or continuous rating indicates the maximum power the inverter can provide without experiencing a drop in performance or overheating over an extended period of time.

When can an inverter start?

Because these inductive loads require a large current to start at the moment of startup, the appliance can start normally only when the inverter peak power is greater than the starting power of the appliance. Under normal circumstances, the peak power is equal to 2 times the rated power. 2. Different types of load.

How much power does an inverter use?

For example, if an inverter inputs 100 watts of DC power and outputs 85 watts of AC power, its efficiency is 85%. If the starting power of the motor is 1500 watts, and the inverter peak power is only 1500 watts, there is an efficiency loss during the conversion process, so the required power is not actually achieved.

What is continuous output power?

Continuous output power is the long term normal operation. It offers continuous power for your load normal working. If your electric devices draw a combined total of 600 watts, then you need to buy an inverter that has a continuous output rating of 600 watts.

How long does a small inverter battery last?

Small Inverters: Most vehicle and marine batteries will provide an ample power supply for 30 to 60 minutes even when the engine is off. Actual time may vary depending on the age and condition of the battery, and the power



demand being placed on it by the equipment being operated by the inverter.

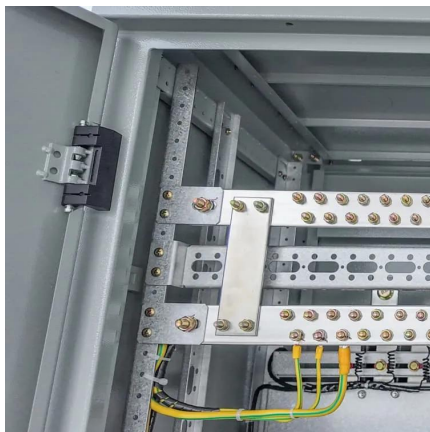
What is an inverter & how does it work?

An inverter is a device that inverts electricity from one source to another so that your gadgets can work properly, even during a power outage. This comprehensive guide will help you select the right inverter capacity for your home. Before diving into the intrinsic details of the inverter, it's important to understand the fundamentals.



## Inverter continuous power

---



### What is the Difference Between Continuous Power and Peak Surge Power

The difference between the continuous power rating and the peak surge power rating is pretty straight forward. Continuous is the amount of constant power the inverter # ...

[WhatsApp](#)

### AIMS Power 10000W Max Continuous Power DC to AC Power Inverter

A leader in solar power and safe energy storage for more than 20 years, AIMS Power is the answer to all of your solar and back up power questions. Designed for use in Home, RV, ...

[WhatsApp](#)



### [Can the Inverter Run Continuously for 24 Hours?](#)

As the reliance on electricity for life and work increases, the ability of inverters to run continuously and stably for 24 hours becomes more and more important. Especially in ...

[WhatsApp](#)

### What is the Difference Between Continuous Power and Peak ...

The difference between the continuous power rating and the peak surge power rating is pretty straight forward. Continuous is the amount of



constant power the inverter # ...

[WhatsApp](#)



### How powerful an inverter should I buy? , Advance New Energy

For commercial reasons, most inverters express their power only in terms of maximum wattage, not in terms of the continuous wattage they support. In this section, we will explain the reasons ...

[WhatsApp](#)



### [Advice on selecting an inverter - Sinetech](#)

Inverters are rated in continuous power and peak/surge power. Continuous power is the total WATTS the inverter can support indefinitely while peak/surge power is the amount of power ...

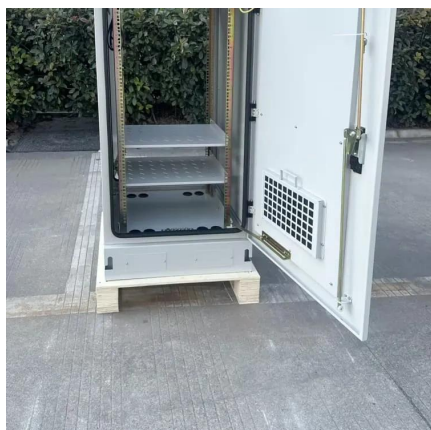
[WhatsApp](#)



### Useful guide to inverter peak power and how to choose an inverter

The rated power is the continuous output power of the inverter, which is long-term and stable power. It provides continuous power for the normal operation of your load.

[WhatsApp](#)

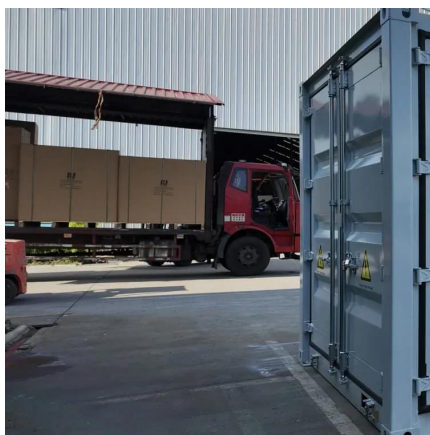




### **AIMS Power 10000W Max Continuous Power DC to AC Power ...**

A leader in solar power and safe energy storage for more than 20 years, AIMS Power is the answer to all of your solar and back up power questions. Designed for use in Home, RV, Cabin, Boat, and Business.

[WhatsApp](#)



### **Renogy Inverter P2 3000W Pure Sine Wave Inverter 12V DC to ...**

About this item ?POWERFUL DC-AC?This 3000 watt inverter 12V to 110V provides 3000W continuous DC to AC power, 6000W peak surge during load start-up, 12V to 120V AC pure sine wave with conversion efficiency >90%, reduces conversion loss.

[WhatsApp](#)

### **GoWISE USA 1,500-Watt Continuous/3,000-Watt Peak Pure Sine ...**

GoWISE USA power inverter is an advanced tool of power conversion. It can supply you with AC power converted from a DC power source. It can be used in cars, vessels, during camping and ...

[WhatsApp](#)



### **Top 10 5000 Watt Continuous Power Inverters for Reliable ...**

Choosing the right power inverter can be challenging. Our guide to the top 10 5000-watt continuous power inverters can help. Power inverters are essential for converting ...

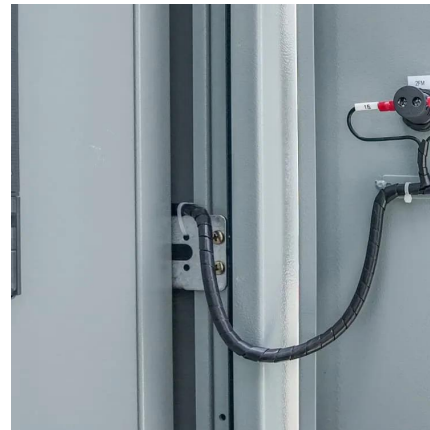
[WhatsApp](#)



### **What is the difference between continuous power and peak power?**

Peak output power is the wattage that an inverter can supply for a very short period of time when start. Continuous output power is the long term normal operation.

[WhatsApp](#)



## **Contact Us**

---

For catalog requests, pricing, or partnerships, please visit:  
<https://www.straighta.co.za>