

Inverter AC fine-tuning





Overview

How to choose a good inverter?

Check the battery capacity and ensure it matches your inverter's needs. Proper maintenance extends battery life. Portable power sources are another great option. They are easy to carry and use. Here are some common types: Power Banks: Compact and rechargeable. Solar Chargers: Environmentally friendly and cost-effective.

How can a power inverter improve battery performance?

Ensuring the inverter is switched off when not needed can prevent unnecessary battery usage. Regularly checking and maintaining the battery's health can extend its lifespan and efficiency. Understanding the inverter's power requirements and matching them with the battery's capacity can further optimize performance.

Can I adjust the settings of my inverter?

Many inverters will allow you to adjust these settings, although the method may not be obvious. Some, however, do not and you must resort to manual tuning. Sorry I can't be of more help, but as I said, knowing what you are using would help. > It would help to know what inverter and what motor you are using.

How does a solar inverter work?

The main aim of making the system more efficient is that when the sun starts setting, the battery starts draining. At a point where there is no sun available (i.e. PV power production = 0W), the inverter switches to utility power (Eskom) which uses a considerable amount of utility power to replenish the battery back to 100%.

How do I maintain my inverter?

Regular Maintenance: Check your battery and inverter regularly. Proper



Installation: Ensure your inverter is installed correctly. Adequate Ventilation: Place your battery in a cool, ventilated area. Battery Monitoring: Use a battery monitor to keep track of charge levels. Avoid Overloading: Do not exceed the inverter's power limit.

How much power does an inverter use?

No geysers / ovens connected to the inverter system. General average power usage on the inverters during the day at any given time is under 1000W (probably 500w average), except for when the microwave/toaster/iron/aircon is being utilised. What do I want to achieve?

- using as little as possible of Eskom power. The problem?



Inverter AC fine-tuning



Properly Selecting and Tuning an Inverter to an Electric Motor

The key to optimizing the performance of electric equipment is properly selecting and configuring the inverter to the electric motor, which consists of setting the proper motor ...

[WhatsApp](#)

[Optimize Your Solar Inverter Settings Today!](#)

Solar power inverters play a crucial role in converting the DC output of photovoltaic panels into usable AC power for your appliances or the grid. To ensure the best performance ...

[WhatsApp](#)



[What is a PWM Inverter: Types and Applications](#)

PWM inverter are widely used in variable frequency drives (VFDs) for controlling the speed and torque of AC motors. They provide precise control over motor speed by adjusting ...

[WhatsApp](#)

[How Do Inverter ACs Compare To Traditional Models?](#)

What's the Difference Between Inverter and Traditional ACs? The key difference comes down to how the compressor operates. The compressor



is the heart of an AC system, responsible for ...

[WhatsApp](#)



Inverter autotuning procedures , Automation & Control ...

A couple of quick ones that come to mind - maybe the PID parameters that the inverter uses to drive the motor are set by default too low to actually move the load, which ...

[WhatsApp](#)



If the inverters or stabilizers are of no fine tuning capabilities it is

Ashokkumar Gnanasekar If the inverters or stabilizers are of no fine tuning capabilities it is worthless in certain cases Reviewed in India on 10 November 2023 Verified Purchase

[WhatsApp](#)



Inverter air con vs. traditional: the ultimate showdown for ...

In the realm of home comfort, the question of whether an inverter air conditioner is worth it has sparked numerous debates. Inverter air conditioners, renowned for their energy ...

[WhatsApp](#)





SMA Sunny Boy 7.7 AC coupled frequency watt control tuning

While testing how the AC Coupling works during a grid failure, it performs well up until the point where the batteries are getting full and the XW PRO starts raising frequency. ...

[WhatsApp](#)



[How to Fine-Tune Your Air Conditioner: A Complete Guide](#)

Learn how to fine-tune your air conditioner for optimal performance and energy efficiency. Our comprehensive guide covers essential tips and tricks to keep your home cool ...

[WhatsApp](#)

Avoiding common issues when tuning an inverter to an electric ...

With more companies attempting to electrify their equipment, a common challenge is properly tuning an inverter to an electric motor. To save time and create efficiency in this ...

[WhatsApp](#)



[Choosing an Inverter to Power Your RV Air Conditioner](#)

Plus, with features like variable speed control in the RV air conditioner inverter compressor, you'll be able to fine-tune your energy use and keep costs down--because who doesn't love saving ...

[WhatsApp](#)



[How to Optimize Your Inverter Settings for Solar Panels](#)

Analyze data and make small adjustments to settings to ensure optimal performance over time. Fine-tuning can improve energy production, extend inverter lifespan, and enhance overall ...

[WhatsApp](#)



Victron Multiplus II off-grid (ESS) Project wir IQ7+ Grid Profile

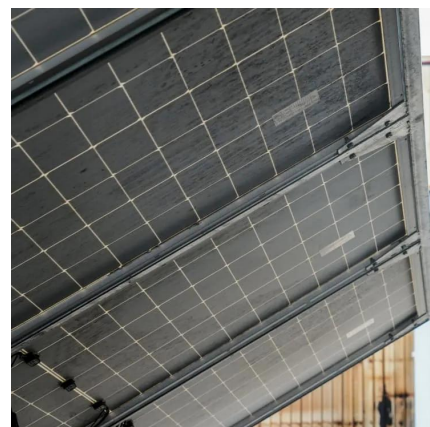
Hello! For a Victron Multiplus II project that is off-grid (ESS), we would like to additionally feed in with IQ7+ inverters. Which grid profile should we select for this project? Enphase Energy ...

[WhatsApp](#)

Pairing voltage-source converters with PI tuning controller based ...

Conventional PI controller tuning methods commonly rely on heuristic approaches, which might only partially optimize performance across various operational conditions. In order ...

[WhatsApp](#)





Contact Us

For catalog requests, pricing, or partnerships, please visit:
<https://www.straighta.co.za>